

# Aanloop Molengat – Maritime archaeology and intermediate trade during the Thirty Years' War

*Thijs Maarleveld and Alice Overmeer, with contributions by O. Brinkkemper, F. van Deijk, W.M. Gijsbers, E.M. Jacobs, C. Joosten, M. Terhorst, A.D. Vos*



Review data  
Submission: 22/2/2012  
Revision: 11/5/2012  
2nd submission: 3/9/2012

available online at [www.jalc.nl](http://www.jalc.nl) and [www.jalc.be](http://www.jalc.be)

## Abstract

In 1635 or shortly thereafter, a Dutch ship was laden with all sorts of materials and products, mostly metals, but also textiles from the booming wool industries in both Flanders and Holland, a shipment of leather and exotic ivory. It was a ship of considerable size (at least 300 *last*) and departed from the Dutch Republic at a time of profound troubles. The Eighty Years' War between the Republic and Spain was far from settled. War at sea was unremitting and intensifying, with Dunkirk privateers an unruly menace to Dutch shipping. Spanish rule in the southern Low Countries was highly militarised, and constant campaigns were waged against it from the North. Central Europe was devastated by the Thirty Years' War, which had entered a new phase through new alliances. The heavy and strategically valuable cargo of the Dutch ship was assembled from North and South, as well as from a range of places in central Europe. The ship departed for a destination that it never reached. It sank off the coast of Texel, where it was discovered 350 years later.

From 1985 to 1999 the wreck site and finds were subject to archaeological research, producing information on the ship, its setting and historical context as well as on the production and distribution of the individual shipments in the cargo, and informing us about the structure of early modern industry and trade, operating despite and because of the war. The present study, initiated by Wilma Gijsbers in 2010 and supported by the Cultural Heritage Agency of the Netherlands (RCE), the Maritime Archaeology Programme at the University of Southern Denmark (MAP-SDU) and the Netherlands Organisation for Scientific Research (NWO; a one-year Odyssey grant), is the first to bring together all this evidence and evaluate it as a whole. Central to the study is the analysis of the ship and cargo assemblage as excavated, which is presented in Part 2 and 3 of this article. This is combined with an analysis of the discovery, its impact and the efficiency of fieldwork methodology in Part 1, and with reflections on the contribution the project makes to our understanding of production, trade and international relations in the specific historical context in Part 4.

**Keywords:** Texel, Aanloop Molengat, Maritime Archaeology, Photogrammetry, Public Archaeology, Mixed diving teams, 17th Century, Thirty-Years War, Shipbuilding, Dutch-Flush, Transport, Straatvaart, Metals, Mining, Ingots, Cloth Industry, Leather, Pin-making, Nicolaas Witsen.

## 1 The Aanloop Molengat site, research history and techniques

### 1.1 Discovery, impact and preliminary survey

The *Aanloop Molengat* site was discovered on July 8 1984, 2.5 nautical miles west of the isle of Texel ( $53^{\circ} 3.58' N / 4^{\circ} 39.30' E$ ; WGS84), in the approaches (*aanloop*) to the Molengat gully that leads to the Texel tidal inlet (fig. 1). When the find was reported to the authorities by Texel-based diver, salver and maritime explorer C.J. Eelman, this started a process that proved critical to the development of archaeological heritage management in Dutch waters. Policy development had been ongoing for several years, but in the absence of clarity in the relative applicability of heritage and salvage legislations, finders considered themselves keepers whatever the nature of the find, but all the more so if valuable metals were involved, as in this case. Lavish and intriguing stamps on the lead and tin ingots found in the wreck convinced the discoverers of the unique historical character of their find. It created an opportunity to settle the issue in favour of heritage policies. A decision was taken to conduct a systematic excavation and there was a political decree to stop applying salvage legislation to heritage, and instead to deploy the protective regime of the Dutch Ancient Monuments legislation both at sea and on land (Maarleveld 1993; 2006). The discovery and subsequent fieldwork and research have thus been vital for the development of underwater archaeology in the Netherlands and for the principle of authorised excavations only. Fieldwork was undertaken in close co-operation with the discoverers, whose maritime expertise and equipment were engaged. Local supporters and a large body of volunteers, wide exposure in local and national media, together with local and international exhibitions lent an air of 'action archaeology' to the project (Tilley 1989; Sabloff 2008; Carver 2011), which had a significant impact on perceptions of diving and heritage. It was intended as an example.

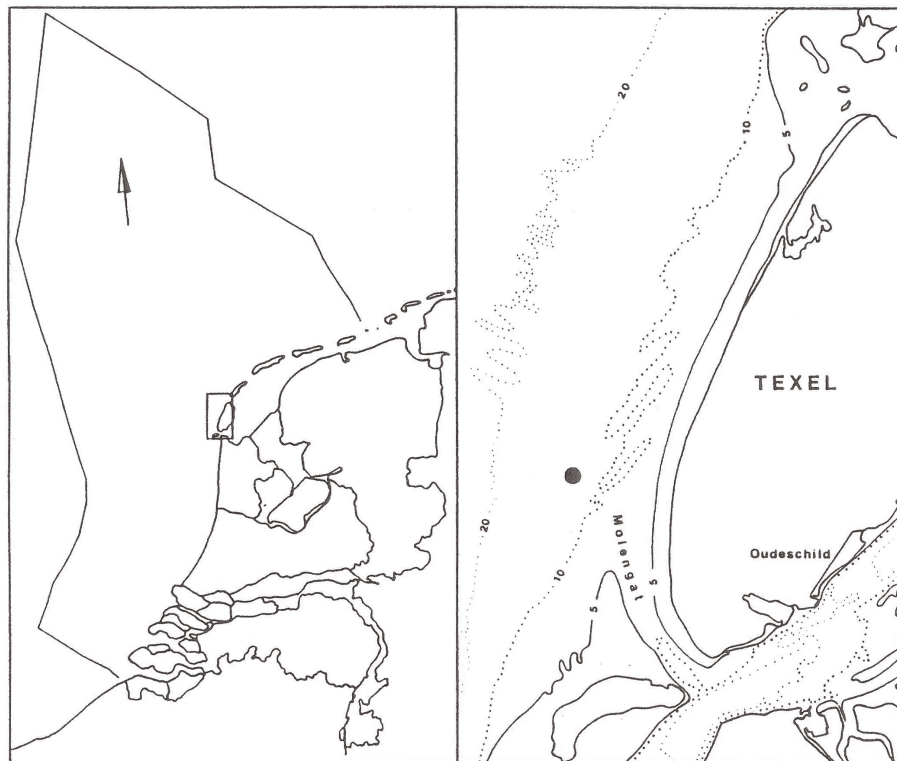


Figure 1 The location of the *Aanloop Molengat* site in the high-energy zone at the entry of the Texel tidal inlet (drawing: Th. Maarleveld (RCE)).

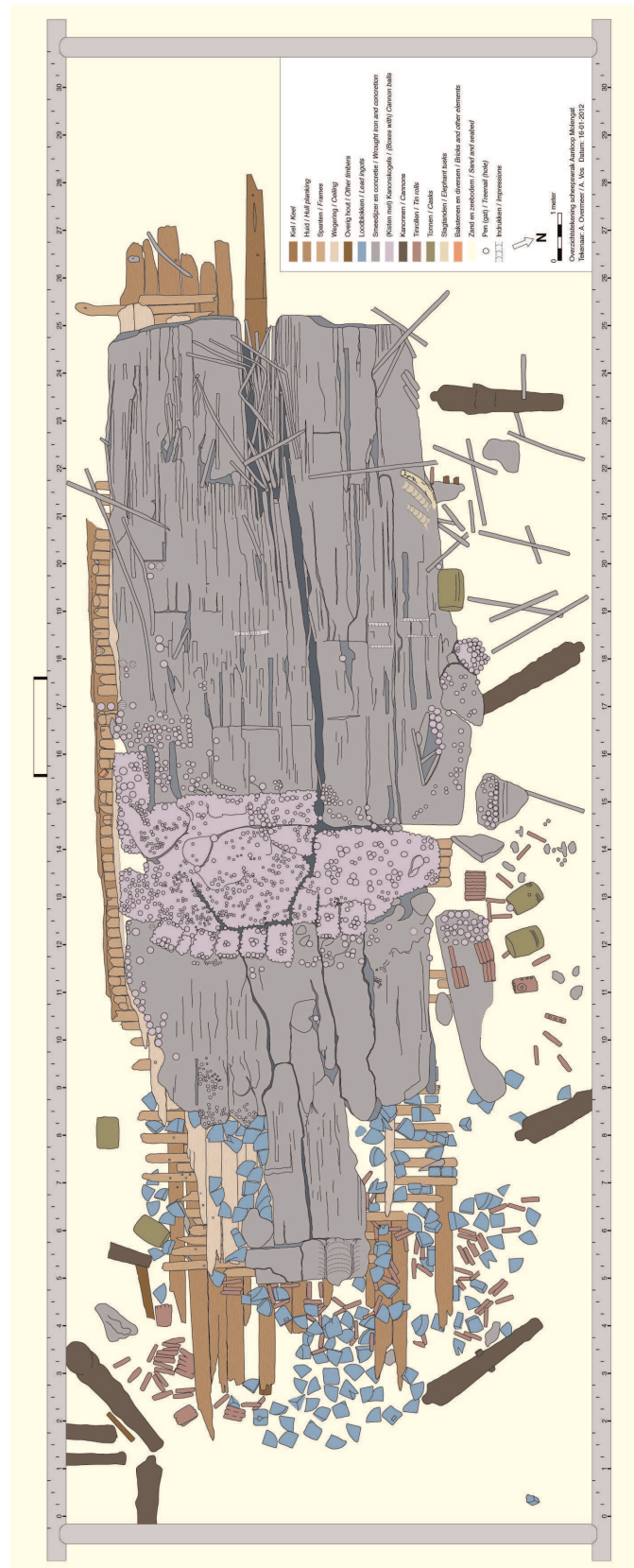


Figure 2 Aanloop Molengat site plan. The extended version includes find numbers, measuring points and excavation grid. The 1985 trial trench is not indicated. It is 1 m wide and runs parallel underneath the top girder of the frame. The plan was drawn on the basis of vertical and oblique photographs, sketches and direct measurements. For simplification the material removed before 1991, including two canon, tin rolls and bales of leather removed are not shown in this overview (drawing: A. Overmeer/A.Vos (RCE)).

Fieldwork started in July 1985 with a first assessment of the site and the collection of data needed for the further design of the project. This included establishing a provisional rectangular grid of baselines marked by measuring poles at 3 m intervals alongside and 4 m intervals at the ends, recording overall characteristics and dimensions of visible remains, and recording the stratigraphy and the extent of find layers through coring and by excavating a trial trench.

### 1.2 *The site and its main characteristics*

The site lies in 16 m of water in a dynamic sand-rich offshore area with significant changes in sediment cover. It is a high-energy zone that is subject to annual changes in the coastal slope just outside the ebb-tidal delta of the Texel inlet (Sha 1990). Seas build up easily due to long fetch for all directions between south, west and north-northeast. Nevertheless, the general appearance of the site is that of a consolidated 'wreck' mound in the sense of Frost's (1962) description of amphora sites in the sediment-lean Mediterranean. This is due to the fact that remains rest on a hard glacial till, which they could not sink into and which was resistant to the scouring that normally occurs around a wreck site in a dynamic sandy environment. The ship sits almost upright and the lower hull is kept in place by the heavy cargo, whereas the sides have been destroyed by biological processes. The fact that the top of the wreck mound consisted of lighter cargo material, packages of leather that were only partly abraded and degraded on discovery probably means that the process of site formation has been an intermittent one, interrupted by long intervals of sand cover. It is assumed that the process of abrasion had just restarted when material was caught in trawling nets in 1984 and discovery ensued. It remains unclear how much of the lighter cargo is missing.

The upper works of the ship are absent. Its remains are likely to have spread over a considerable area. No secondary site was discovered in the vicinity. Apart from a number of heavy, cast-iron gun barrels, the excavation produced few artefacts other than cargo material.

The wreck mound extends over approximately 27 x 9 m and is oriented northwest-southeast. The associated find layer extends somewhat further and was eventually examined over an area of 33 x 13 m (fig. 2). During the first observations, the bales of leather, or rather the smoothly rounded surface of the abraded vertically placed sheets, were conspicuous at the top (fig. 3). They were firmly concreted to a layer of wrought-iron bars running parallel to them below. Immediately southeast of these, but still on the wrought-iron, rested a tier of broken barrels containing rolls of tin. Lead ingots could be observed below the iron bars. To the northwest of the leather packages, but also on top of the iron bars, rows of cases were in evidence through the cubic concretions of their contents, notably cast-iron cannon balls of various sizes.

A geological profile, cored perpendicular to the main axis of the wreck mound, shows a slight depression in the underlying till and a contaminated layer sharply wedging out away from the mound. It extends slightly more to the east than to the exposed west (fig. 4). A metre-wide trial trench excavated to check the extent of the find layer along the southwestern side produced a limited number of small finds. Hand-drawn profiles and descriptions show the top of the till to be irregularly eroded. It dates to the Drenthe phase of the Saalian glaciation (*laagpakket van Gieten*), also known as the Borkumriff Formation (Laban 1995). The contaminated find layer is well-sorted, with coarse shingle (and small finds) occurring only in its lower part (and pockets) (fig. 5). This is as much a product of natural reworking as of the repeated removal of topsoil before actual excavation could continue.



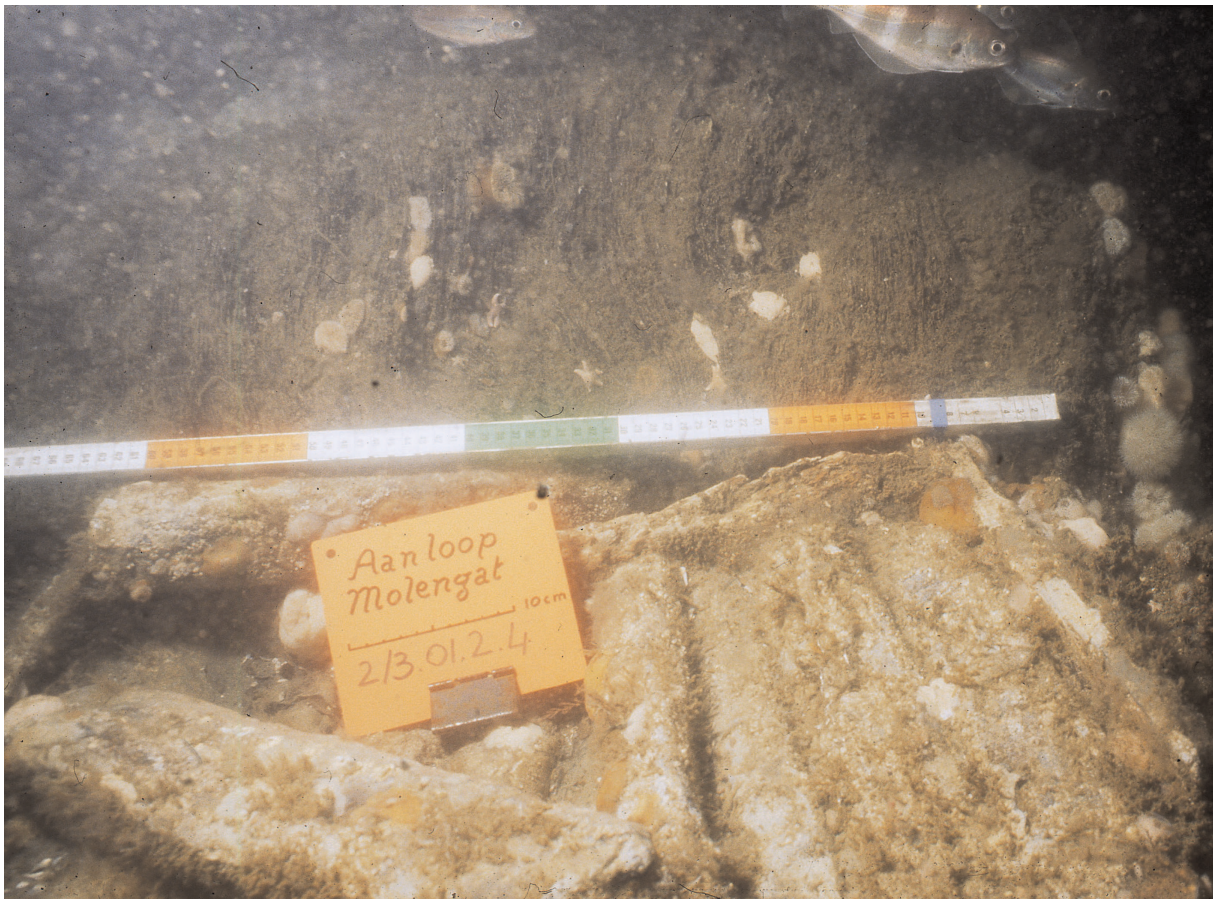


Figure 3 Tin rolls and leather in situ. The head of the barrel in which the tin rolls rests can be seen just in front of the leather sheets in the background. The packing of the bales has gone, but their even end is clearly visible. The leather sheets are vertically placed and only slightly abraded at the top (photo: A. Vos (RCE)).

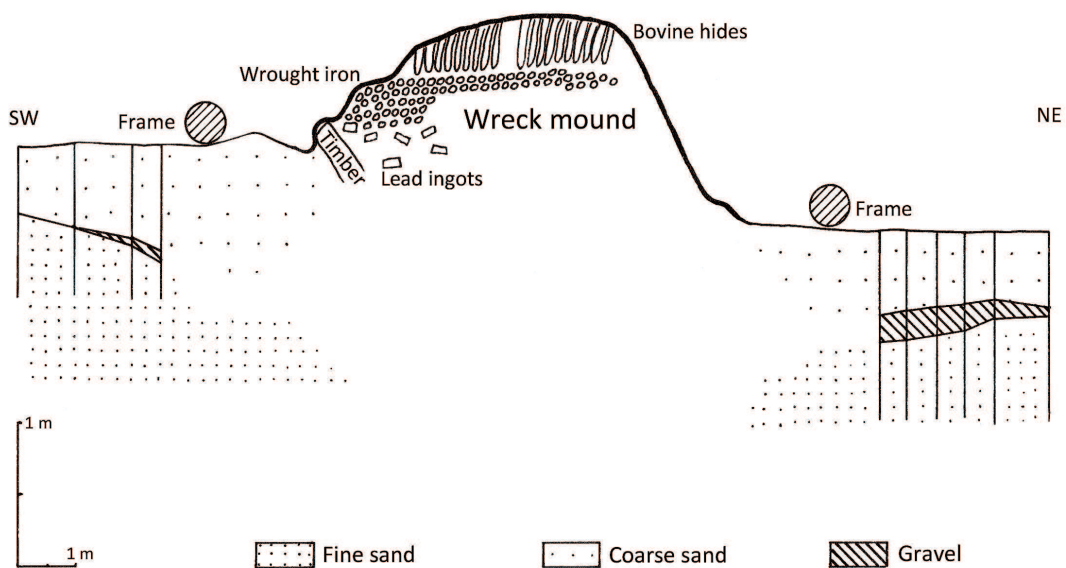


Figure 4 Cross-section on the basis of 1985 observations and coring (drawing: Th. Maarleveld adapted by P. Kleij (RCE)).

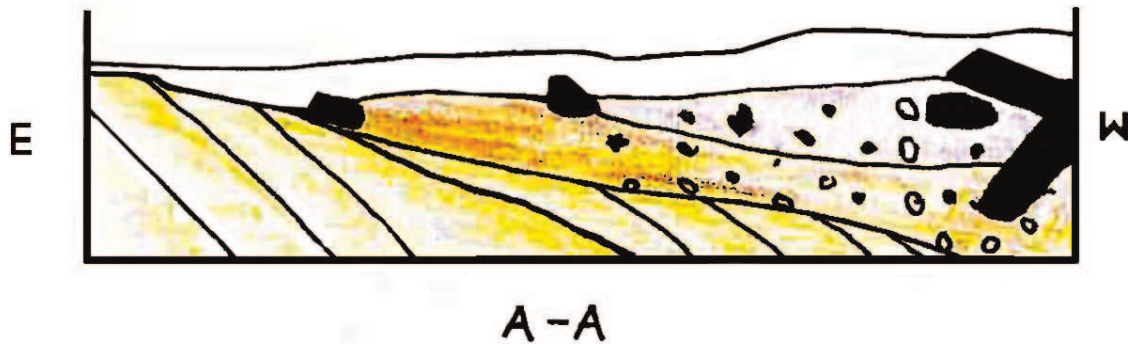


Figure 5 A sketch characterizing the find layer in profile in excavation away from the wreck-mound (from: Dive report Seweryn 20-07-1991).

### 1.3 Logistics, objectives and choice of methods

All on-site work at *Aanloop Molengat* was characterised by the exposed location close to a lee shore and at two hours' sailing distance from the nearest harbour. Underwater time was scarce because of the substantial risk of adverse conditions. In view of this, the decision was taken to make the best of the occasional optimal conditions and allow for step-by-step progress in a repeated hit-and-run strategy with a relatively small vessel. This meant accepting slow progress. The approach demanded great flexibility but was realistic in terms of staffing and direct expenditure. It tied in well with the objective of engaging the original discoverers and the local and diving communities, and with using SCUBA as the diving technique. It is a completely different approach than one would choose under time pressure or under development-led circumstances, where it would be appropriate to deploy a large support vessel or platform and be less weather dependent.

With the aim of analysing the packing and stacking of the cargo material, it was considered essential to document the position and orientation of each item in three dimensions. In view of long interruptions to the work, it was not feasible to establish stable, retraceable and reusable reference points on and away from the wreck mound as required for direct survey (Lundin 1973; Adams 1986). Methods of trilateration, or combined measuring and sketching are reliable but time-consuming (Maarleveld 1984). Tidal currents and height differences interfere with direct measuring over distances exceeding a couple of metres. Considering the occasional occurrence of relatively good underwater visibility, it was decided to structure documentation around photography instead. This would fit in well with the hit-and-run operational strategy, and photogrammetry was a developing field that showed great promise (Maarleveld & Vos 1989).

A steel frame of 32 x 11 m was lowered around the wreck mound at the start of the 1986 season (fig. 6). It was oriented along the measuring poles of the 1985 survey and served as an anchor for the shot lines at each corner, as well as for the floating crossbar along which the photogrammetric camera could be moved. The bar was inspired by the system that replaced a photo tower in the *Madrague de Giens* excavations (Gianfrotta & Pomey 1980), but needed to be much more robust to meet North Sea conditions. Moreover, flashlights were needed and it was decided not to rely on a single-lens camera, but to ensure the creation of a stereo-pair at each shot by using a double-lens camera (Hasselblad/Ocean Optics MC-70).

It was unclear how many layers would need to be recorded and correlated. The depth of the find layer had been established with a handheld Kyholm corer (Nørnberg & Christensen 1980). Probing into the wreck mound was not possible.





Figure 6 The steel frame at the quay in Den Helder, prior to being sailed out and lowered around the wreck-mound. Note the staggering, colour-coded eyelets at 25 cm intervals along the side of the rectangle. These are meant for attachment and navigation of the floating crossbar that holds the camera. They also served as help in drawing the site plan, in which they are indicated with numbers. The four-legged safety booth that was to be attached to the frame can be discerned in the background (photo: A. Vos (RCE)).

#### 1.4 Documentation

The vertical photo documentation included temporary reference points and scales and was supported by distance, size and height measurements relative to a datum point, taken with the underwater height meter (UHM) that had recently been developed (Botma & Maarleveld 1987). Although a pilot study (Hugen 1990) showed that a three-dimensional site model can be created from the documentation (fig. 7), the process of photogrammetric processing proved unduly cumbersome (Vos 2011 [HyperlinkVOS](#)). Even on land and in clear water, photogrammetry is not necessarily the most cost-effective documentation method (Reinders 1986). With software that integrates various ways of data capture and 3D modelling, it adds to the archaeological toolkit but is hardly ever a replacement (Green & Gainsford 2003; Sanders 2011). The main problem is that even in non-parametric approaches the accuracy of automated results is fully dependent on the accuracy of the input and the input that qualifies as archaeological documentation needs selective and consistent, time-consuming interpretation. Part of the disappointment with photogrammetry was that the amount of time, equipment and computer power needed for processing was not cost-effective and that outsourcing interpretative phases led to faulty interpretations.

From the start, the vertical photographic pairs were complemented with oblique photographs of each individual cargo item to be removed. Individual items were identified on vertical photographs according to the imaginary grid. This obviously was done on land and in order to reduce precious bottom time. A label and a labelled photo assignment for one or more oblique shots of the same item were then prepared along with a slate with its sketched position, to be taken down on the next occasion. Assignments to remove and lift an object followed, similarly with an identification sketch on a slate (fig. 8).

The find number of each object relates to the first photograph on which it appears. Although in principle this allows for quick reference, it leads to a complicated numbering system, the

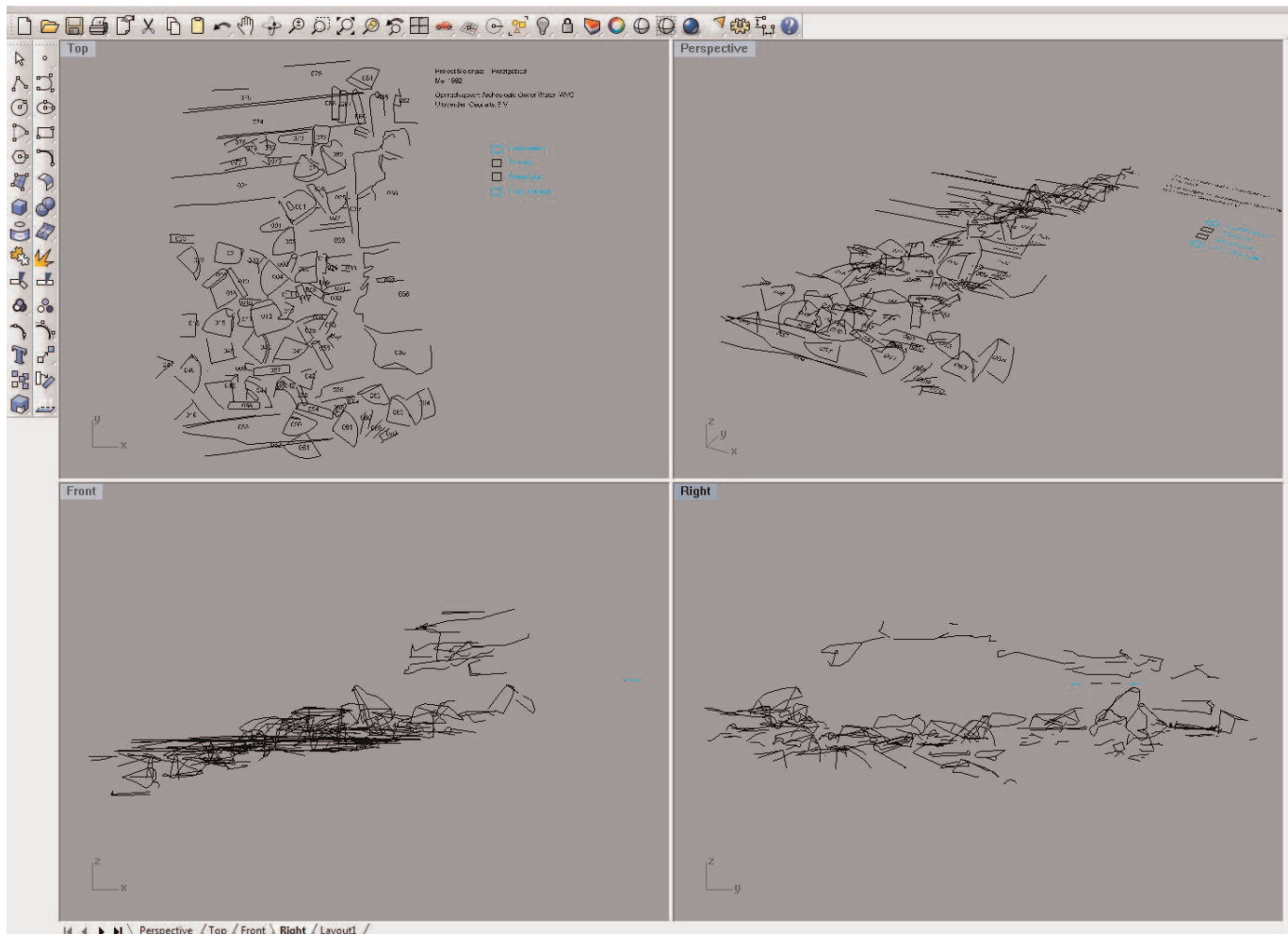


Figure 7 In 1990, Ingrid Hugen created a three-dimensional model of part of the site on the basis of the information that had previously been collected. The dxf file that she prepared is available and could still be opened in 2012, as this screenshot in Rhinoceros 4 shows (SDU-MAP).

more so since more photographs were needed for full coverage than anticipated. Also, it was a challenge to keep track of each item's correct number. A simpler serial numbering system would have been advisable. Such a simple system was effectively used in the registration of small finds that were collected when excavating the find layers away from the wreck mound, both in the 1985 trial trench and in the south and eastern sides, where finds were collected in approx. 2 x 2 m squares (sections A to M, see [HyperlinkDrawing](#)).

### 1.5 Organisation, safety and technical issues

The hit-and-run project ran in tandem with the excavation of the 16th-century merchantman *Scheurrak SO 1* (Daalder et al. 1998; Manders 2003) under the assumption that activities offshore could be combined effectively with activities in the Wadden Sea during 14-week summer campaigns out of a fieldwork base on Texel. But calm weather is also required for excavating in the Wadden Sea. The most productive *Aanloop Molengat* seasons were 1987 and 1992, with 22 and 30 days of work on site. Apart from monitoring missions in 1998 and 2004, work on site was interrupted in 1994, only to be resumed for a two-week campaign in 1999, when a dedicated professional team had been made available (Chart 1). All earlier seasons involved a



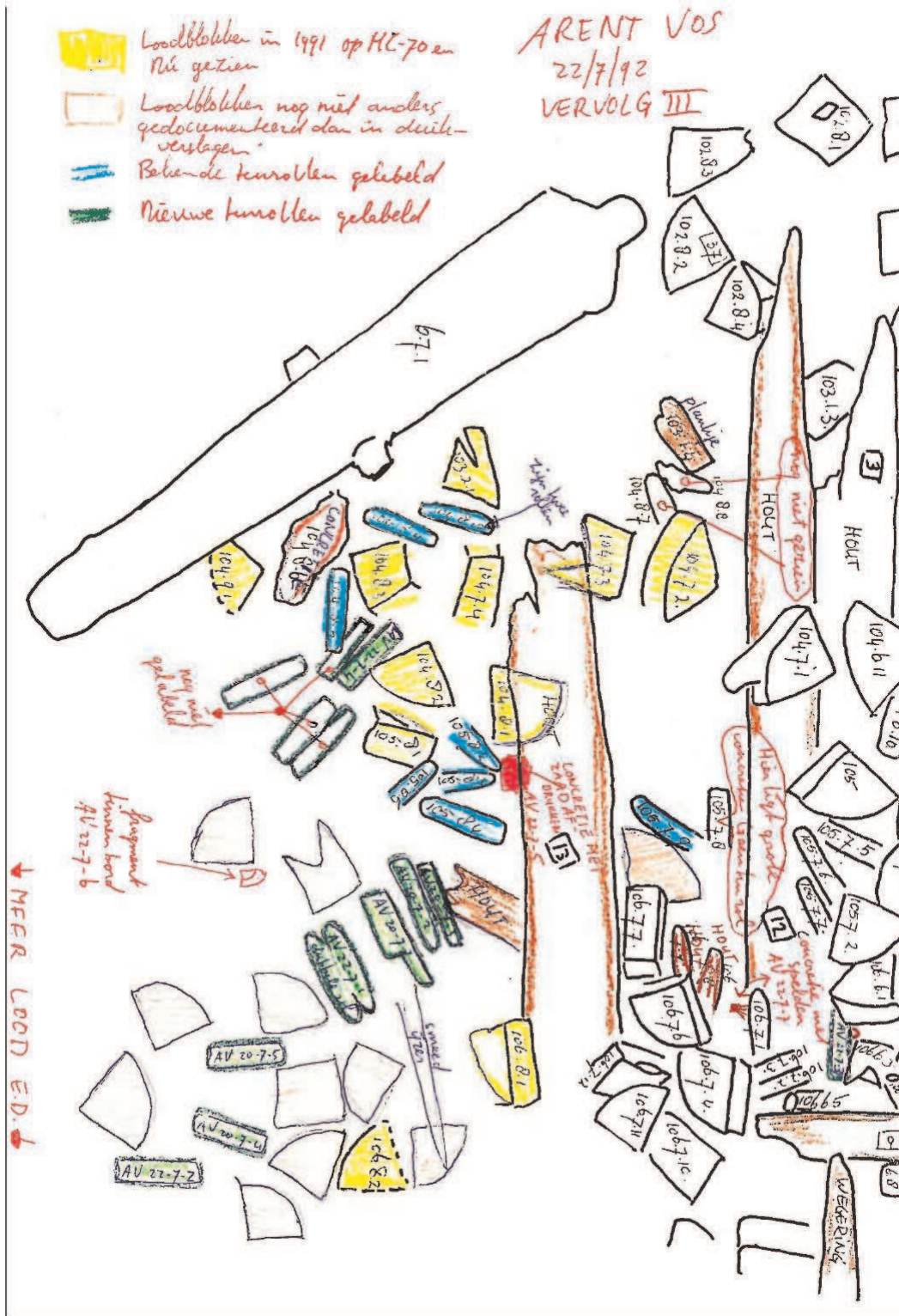


Figure 8 A typical sketch informing the order of removal in excavation (from: Dive report Vos 22-07-1992).

mixed team, including a gradually increasing core of professional diving archaeologists, a decreasing number of locally hired maritime service personnel and a large number of volunteers, mostly archaeology students and avocational archaeologists – more than a hundred people in total (Chart 2).

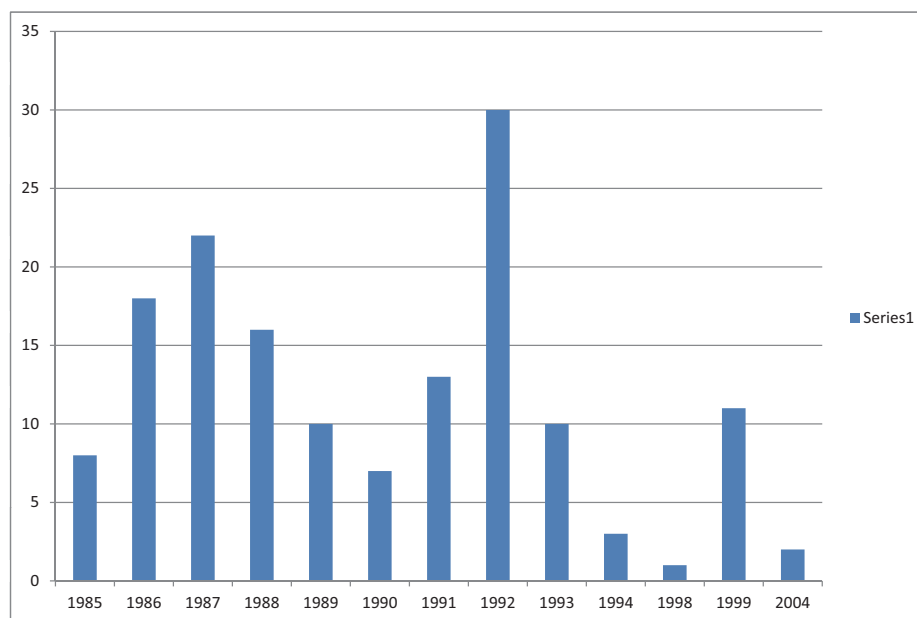


Chart 1 Fielddays per season.

The frame and its deployment were a solid investment, but proved immensely useful. It served to delimit the site and to provide orientation and a safe and stable working environment in an area with shifting sands and varying surface cover. The camera-navigation bar proved a cumbersome piece of equipment. It needed at least a full diving day to install or remove at the beginning or end of the season. Despite its robustness, it was still subject to swell. It needed a lot of air in its floats to keep it stable, which meant heavy work on the winches to move it around. It was the sort of equipment that assumes priority rather than enabling more important work (Keith 1990). Twice, after a storm, it went missing and was replaced by a balanced, single-diver-operated support for camera and flashlights. A well-trimmed diver obtained the same results with the two-lens camera, with far less trouble. Swell was still a problem, but a running current actually had a stabilising effect.

A safety booth was fitted to the frame, inspired by the 'telephone booth' of the *Yassi Ada* excavations (Bass 1968) (see fig. 6). As diving was organised in untendered SCUBA, it was considered an extra support. Although a fixed feature, it was missing when the site was relocated in 1987. Despite heavy welding and bolts, it had been torn from the frame by a trawl net. It is unclear how much the frame moved accordingly, if at all. Damage to the archaeological material seemed very limited. The booth was not replaced. A spare cylinder- or surface-supplied regulator took its place until a system of through-water communication was implemented for the team. The central safety measure was a strict procedure of planning, checks and monitoring of the diving operation.

It was not just the removal of backfill and overburden of sand, but also the cutting away and removing of heavy netting and other alien material that distracted from archaeological work.<sup>1</sup> The hit-and-run strategy was unsatisfactory for these essential activities. The small support vessel *Phileas Fogg* did not have adequate dredging and lifting equipment, and valuable time was lost as a result. At a particularly critical moment in 1991 it was therefore decided to call on the assistance of the Terschelling-based *Duikteam Ecuador* and their well-tried diving vessel *Ursus II*, which had stronger equipment and a compressor.

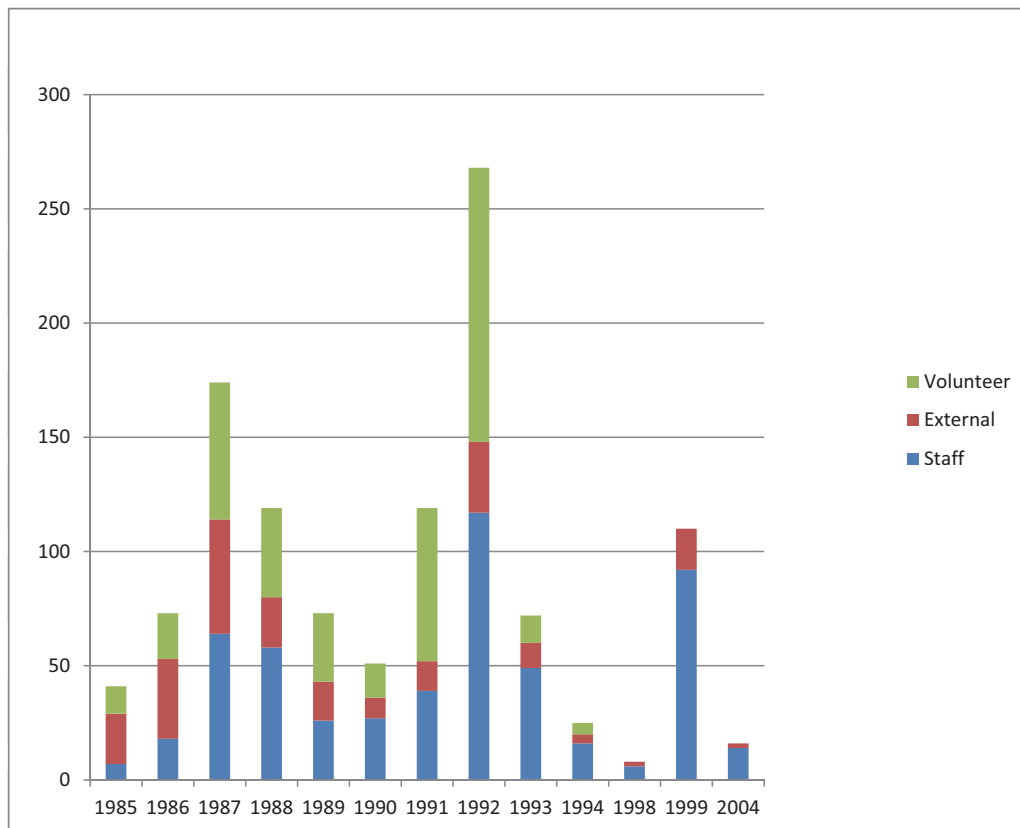


Chart 2 Fieldwork man-days per season divided according to staff category. A total of 102 persons took part in the fieldwork operations, spending a total of 1141 man-days on site. 80 % (921 man-days), however, was realized by a core of 28 persons, who each worked more than 10 days on site. 15 of these were employed as staff, 4 were external, each of them engaged from the local maritime community and the 9 others were persevering volunteers.

### 1.6 Progress, consistency and an integrated site plan

Conditions were hardly ever as initially expected and support activities such as technical preparation and cleaning before a photo-documentation run took up almost as much bottom time as reference measuring, setting up temporary data points, excavation, and recording, labelling and removal of find material (Chart 3). Data gathering spanned a period of nearly fifteen years but the total time spent on-site at the bottom surface remained limited to slightly less than 970 hours, the equivalent of what a team of six can achieve on a landsite in a four-week campaign.

It was only after the 1988 season that the first layer was removed. The excavation of find layers adjoining the wreck mound began simultaneously, producing sketches, profiles and small finds that added to the variety of the assemblage. During the 1991 season, disappointing visibility conditions and a sand dune on part of the site led to a reconsideration of the documentation strategy (Briefing report 12 July 1991). Interestingly, this was almost exactly halfway (455 hours had been spent underwater, with another 515 to come). It was decided to remain true to the original recording strategy after the calculation that switching to conventional documentation in sketches or trilateration would take another 400 underwater hours of expert recording, a luxury that could not be afforded, even though more expert staff were available than at the start. In the end, expert recording accounted for only 164 underwater hours in total. Nevertheless, it took until the productive season of 1992 before a second layer could be documented vertically in full. Most of the subsequent removal and lifting of cargo material was finished when the project was discontinued in 1994. The excavation of the southeastern side

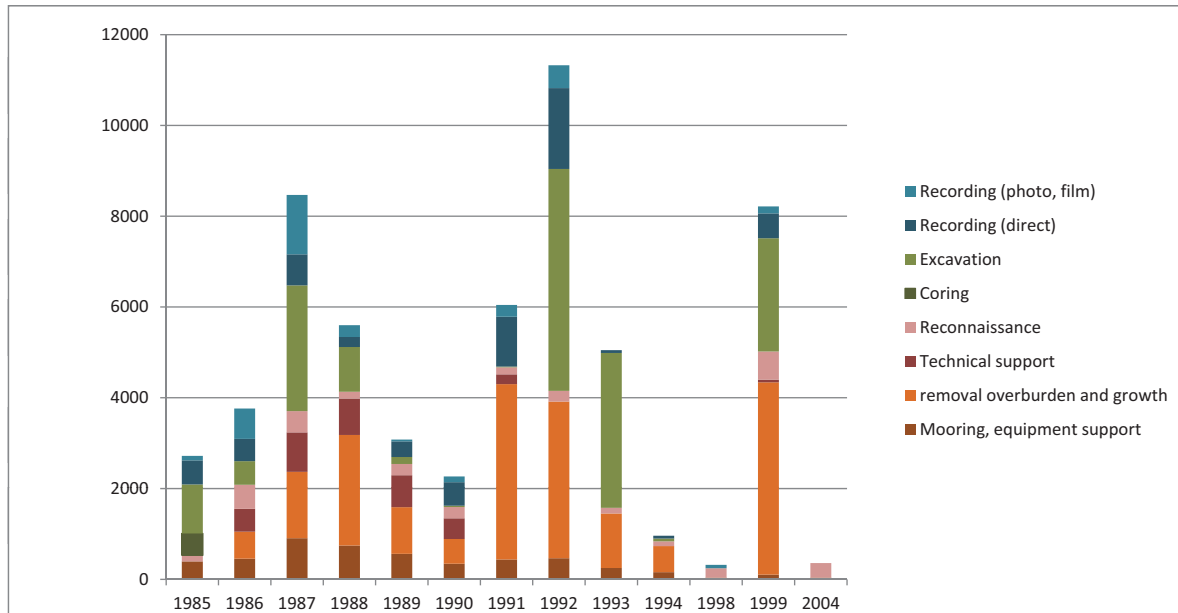


Chart 3 Bottom minutes per season according to category of activity. Of a grand total of 58170 bottom minutes, 27902 were used in supportive and technical activities, whereas 30268 minutes were used directly in excavation and data gathering. Recording made up for 9834 minutes in total.

was finalised in 1999. Although the fieldwork took far longer than the five seasons originally planned, it stayed within the original project design and budget.

In hindsight, the photographic record proves well up to the questions to be resolved. There is enough redundancy in verticals and obliques, and with modern computers and software it has been relatively easy to join the verticals in a 2D mosaic (fig. 9). A more elaborate site plan was prepared independently of this, integrating all types of data gathered in photographs, sketches and direct measurements (see fig. 2). The aim to integrate all observations in a three-dimensional model was abandoned in favour of achieving this result, but it would still be possible to create one if sufficient reason arises.

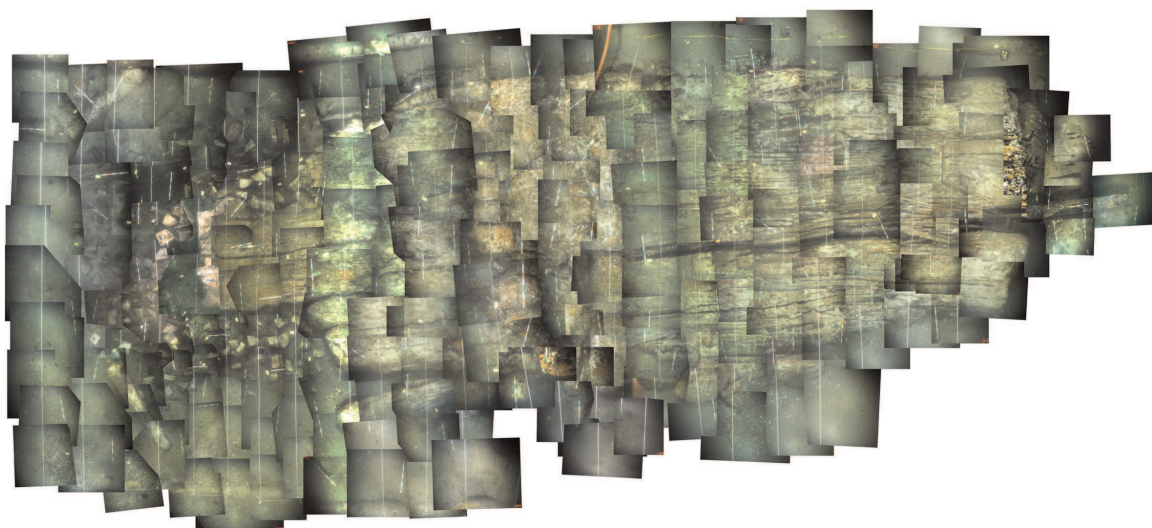


Figure 9 Basic photomosaic which combines a selection of 241 vertical photographs taken mostly in 1991. Photos have been scaled, but deskewing and other corrections have been very limited, nevertheless producing an informative result (made by: J. Opdebeeck (RCE 2011)).



## 2 The Aanloop Molengat ship

### 2.1 Ship construction and internal organisation

The *Aanloop Molengat* investigation placed greater emphasis on the cargo than on the ship itself. Nevertheless, quite a few characteristics of the ship can be deduced. It sits more-or-less upright and the superstructure is missing. The composition of the find assemblage suggests that large parts broke away and were not deposited on site. Only heavy cannon were left behind, eleven in all. The lower hull is kept in place and hidden from view by the cargo mound, notably the concreted mass of iron. In consequence of the decision not to move or remove this, all observations relating to the ship's construction have been made along the wreck mound's sides. The lower hull extends over a length of 26.5 m and seems to be continuous and relatively straight. It is approximately 8 m wide. Observations at the northwestern end suggest that it has a slight list to the northeast, and that it may have broken lengthwise along the keel. This would explain the wide lengthwise crack in the mass of closely packed iron bars.

The keel is a solid beam of oak. At the northwestern end it protrudes some 3.4 m from the cargo, where it ends in a vertical scarf. At the other end, it could not be identified. It must, however, have extended over the full 26.5 m. At the broadest point observed, where it was cut for a dendrochronology sample, it is 44 cm wide. It is almost square, with a depth of 41.5 cm. It tapers towards the end where it still has a depth of 38 cm and is likely to widen in the other direction. To receive the garboards, a single rabbet has been cut on either side, at 5 to 6 cm below the top and rising forwards (fig. 10). A single square nail hole indicates that the garboard had been attached with square nails. Rows of two or three nail holes, spaced at about 13 to 17 cm intervals, occur on the sides, but have not been observed underneath. The nail holes are thought to reflect a layer of sheathing, probably in lightwood, as no metal has been observed. The end scarf is 33 cm long. One iron bolt and two iron spikes secured it to another construction element. In view of the tapering end and the rising rabbet, this could hardly have been another length of keel. Neither is it a plausible solution for joining sternpost and keel. The scarf, which faithfully matches Witsen's (1671, 147-151) description of a stem scarf, almost certainly joined an apron or lower stem section. This implies that the northwest end of the wreck is the bow.

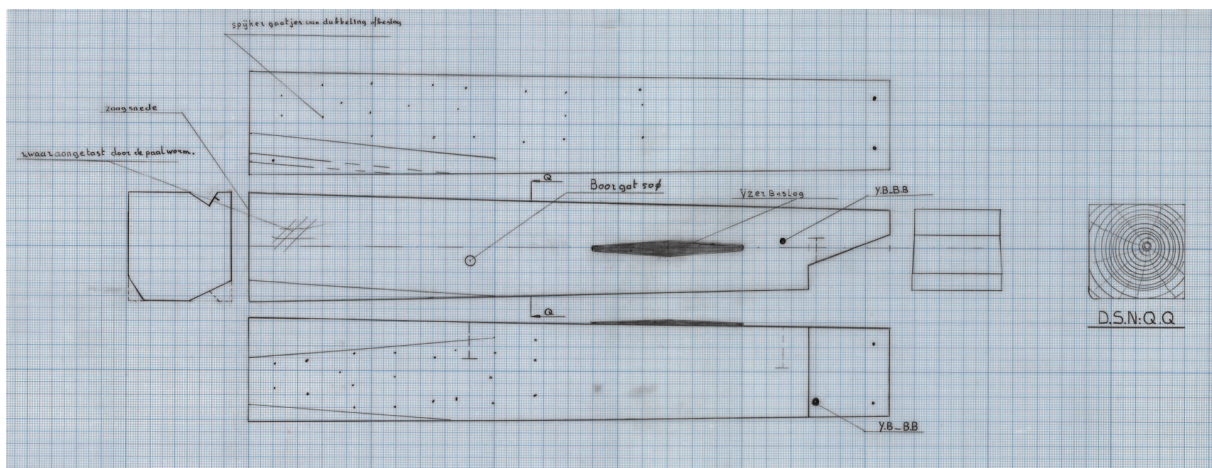


Figure 10 The raised fore-end of the keel. The sample is 2.6 m long (drawing: L. van Dijk (RCE)).

Following from the identification of the ship's orientation, it can be inferred that the sternpost and deadwood broke away, taking some length of keel with them and breaking it loose in such a way that it is now missing from the otherwise fairly contiguous shell of bottom planking.



*Figure 11 Planking, frame timbers, ceiling and the rim of the concreted cargo along the southwest side of the wreck-mound (photo: P. Stassen (RCE)).*

Despite the list to the northeast, the southwestern (or port) side of the ship is best preserved. The sea bottom is highest here and amidships the ship's side is continuous to include part of the turn of the bilge.

At the northwest or fore end, six (or seven) adjoining hull planks are observed, all ending in abrasion. They do not directly adjoin the keel. Either the garboard strake is missing or the keel has shifted at this end. The planks have widths of 25 to 44 cm. At the southeast or aft end, thirteen hull planks protrude from under the cargo. At the portside, two of them end in a scarf joint that is more than 60 cm long. The orientation of these scarves does not affect the interpretation that this is the stern. Plank widths vary from 28 to 38 cm. Their thickness has not been systematically recorded, but is at least 7 or 8 cm. It seems to be a bit more in the bilge along the side. The planks are flush; it is a carvel hull. Wood of a lighter colour has been observed on the outside of the longest hull plank aft. It is approximately 25 cm wide and may well be part of



lightwood sheathing, such as is also inferred for the keel. Otherwise, all planks and timbers seem to be oak.

Transverse timbers are visible at the southwest edge (port side) where erosion has produced a smooth cut through the hull structure and where they stand together, almost without any spaces (fig. 11). Other frame timbers are visible at the northeast or starboard side, where alternating timbers have broken away. Room-and-space is irregular, but seems to average around 40 to 45 cm. Sided dimensions of the timbers vary from 14 to 25 cm, with an average of 19 cm, which is also approximately their moulded dimension. Some of the timbers have original endings, others continue in a sharp curvature. Although the alternating timbers are placed closely together in the bilge, no indications for interconnection have been observed.

Internal structural planking was attached to the inside of the timbers. The widths of these ceiling planks vary from 33 to 50 cm. Their thickness is unknown, but apparently similar to the planking. They are flush-laid without any spaces, providing a closed ceiling, fastened with trenails of 3 to 3.5 cm in diameter.

In the sandwich of planking, timbers and ceiling, the timbers are relatively light. Their dimensions and spacing (17 to 18 elements at the bilge over 4 m of ship's length) compare well with what we know of early modern merchant ships that are built shell-first in the Dutch-flush manner (Maarleveld 1984, 67; Maarleveld et al. 1994; Lemée 2006). Although this ship is larger than other examples, framing is not more substantial, and planks and ceiling may be slightly thicker (only *B&W2* compares well in that respect; Lemée 2006, 200ff.).

The dendrochronology of the keel suggests that it came from Westphalia, a region in north-west Germany, roughly between the rivers Rhine and Weser (Jansma & Spoor 1991). This is consistent with a building spot in the Northern Netherlands, where practically all timber was imported, but it could of course point to northern Germany as well.

A striking issue is the absence of a clear indication for the presence and position of a mast. The mainmast cannot have been positioned where the wrought-iron bars lie. Close scrutiny of the site plan (see fig. 2) shows that the forward portion of concreted iron ends in a straight line at right angles amidships. This is most obvious between metres 14 and 15 on starboard. The straight line is likely to reflect the original presence of a bulkhead, behind which the mast was stepped, in an area that is characterised by a jumble of concreted cannon balls that have filled the empty space where the mast once stood. It might even be the case that the wrought-iron is not continuous, but leaves a cross-ship corridor of about one metre unoccupied. To what extent this would affect the indicative calculations of cargo weight remains to be seen. If a corridor is present it seems to be filled with cannon balls, perhaps in cases, and cast-iron is only fractionally lighter than wrought-iron or steel.

Apart from the inferred bulkhead amidships, which may have been a temporary structure, a bulkhead seems to have been present at the forward end of the iron bars. After all, here the bars end in a more or less straight line as well, possibly with some shifting forward in the middle. At the aft end, just below the barrels of tin, the very residual remains of a decayed bulkhead have actually been observed. The overall length of the hold between these two bulkheads was 19.5 m. The depth of hold cannot be inferred. Apart from the cannon, no remains or evidence on the orlop and upper structure was found on site.

Reasoning from the coherent structure as shown in fig. 2, the ship can hardly have been narrower than 8.5 to 9 m. To the preserved length of 26.5, one should add some 7 m or more for apron and stem. Moreover, a substantial part of the stern is missing. How much depends on the presence and form of a transom. The bottom is still wide at the aft end, but individual strakes are not, which might indicate that the hull narrows at this point. Nevertheless, it would be hard to fit the continuing hull, deadwood, sternpost and rudder in less than 3 m. The overall length cannot have been less than about 37 m. Another approximation of size is its cargo capacity. Even though the ship sank, it is not reasonable to estimate its capacity at less than the total

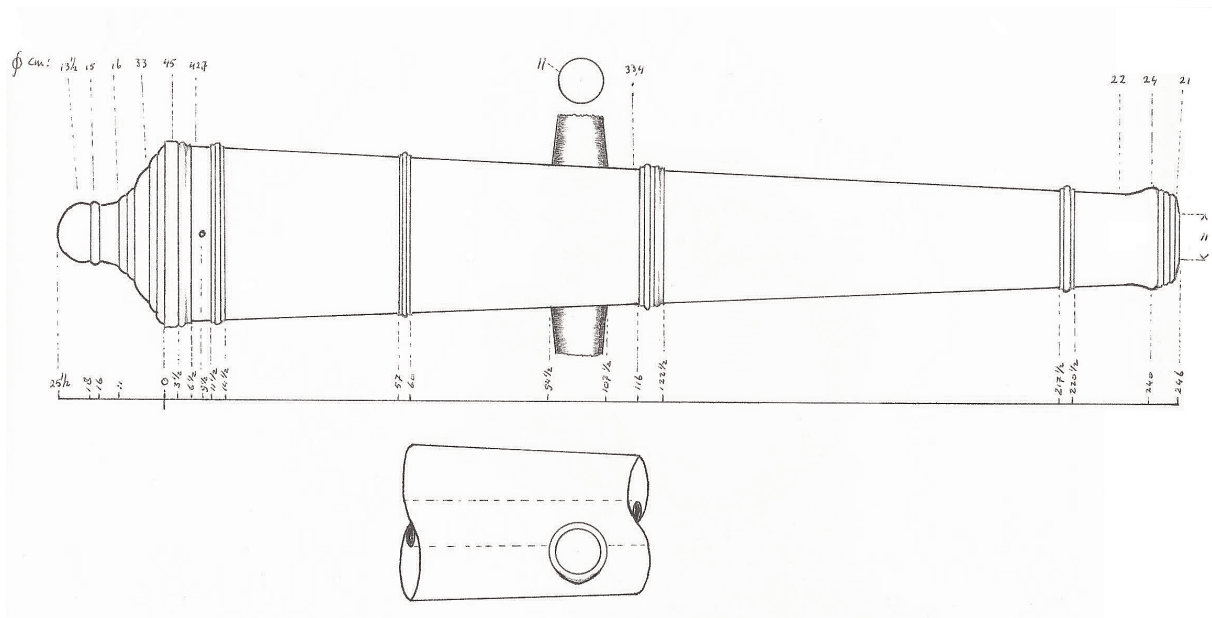


Figure 12 Two identical cannon were recovered from the Aanloop Molengat wrecksite (AM-2/3.01.2.1 and AM-3/4.01.2.1). Each is approximately 2.46 m long (drawing: N. Brinck).

weight of the goods it carried. The absolute minimum weight of the cargo as found is estimated at 550 tons, while more than 600 tons is more likely.

## 2.2 Armament and inventory

Eleven cast-iron cannon have been found across the wreck. Two of them were lying directly aft of the south end of the wrought-iron. Four cannon were scattered along the starboard side. Five others were lying in the south of the site (see fig. 2). The distribution of the cannon implies that they were used as ship's armament, rather than being part of a cargo of new cannon, or damaged gun barrels, as in the *Brouwerhavense Gat 2* wreck (Vos 2004). They probably tumbled down from their original position on a higher deck during the wreck formation processes.

The two cannon directly aft of the wrought-iron were recovered in 1988. They had been moved to facilitate excavation and were lifted in order to check for markings. After weighing (both 1280 kg), they were drawn at a 1:5 scale and studied by Nico Brinck, an expert in armament (fig. 12). The cannon are 9-pounders, large cannon used for large ships. They are semi-culverines, with tapered trunnions and a bore of 11 cm. Such cannon are believed to have been cast in England and to be typical of the 1630s. In view of the dimensions, there must have been more 9-pounders or even heavier armament aboard.

Many cast-iron cannon balls of various sizes were lying approximately amidships, concreted in two rows of cubic shapes. A bar shot and a grenade, with the powder charge still intact, seem to be exceptions in the assemblage of these 'normal' cannon balls which belonged to the cargo rather than to the armament (van der Linden *forthcoming*).

A total of 1558 lead balls were recovered among the small finds in the southeastern end of the excavation. They range in diameter from 8 to 18 mm, but two distinct groups of 10 and 15-16 mm are discernible, the smaller ones for pistols, the larger ones for muskets (van der Linden *forthcoming*). All musket and pistol balls were measured using XRF. The results show that no homogeneous groups can be discerned. The composition is very different from that of the lead ingots in the cargo. This implies that the musket shot was made by smelting scrap lead and re-used shot, probably over and over again. It is unlikely to have been a commodity for trade; rather, we are dealing with ammunition supplies on board this ship (van der Linden *forthcom-*



ing). As the vast majority (86% of the 847 for which the findspot is documented) came from sections C and H, it can be inferred that they had been stored in the stern along the ship's centreline, rather than in the hold. This is consistent with the layout of most early modern ships, where ammunition and hand weapons were stored in central lockable compartments aft. Witsen (1671, 58-59, 159, 198) describes this for contemporary ships, for ships of 30 years previously, and for ships from France.

Strikingly few objects belonging to the ship's inventory have been recovered. No earthenware or stoneware can be associated with the wreck. All such finds are clearly from a different period and are dealt with below as later contamination. The few items that are likely to belong to the ship's inventory originate from a thin spread all over the excavation area.<sup>2</sup>

A few fragmentary wrought-iron fittings may be part of the rigging. The only possible item of navigation equipment is a small sounding lead. The conical lead has a length of 9.5 cm and a maximum width of 4.5 cm. Its base is not hollowed and we cannot rule out that it is a large fishing weight that should be considered a later intrusion. Similarly, two pieces of rolled lead sheet, 24-25 cm long and 1.6 cm in diameter, may be interpreted either as weights, or as belonging to the original ship's equipment.

Gear for cooking, eating and drinking is highly underrepresented. One pewter spoon was found in section F. It has a circular bowl and a crowned Tudor rose mark with initials CH near the hexagonal handle. The Tudor rose appeared in the Northern Low Countries from about 1540 onwards (Dubbe 1965, 69). Cast-iron fragments seem to indicate at least three three-legged cooking pots.

Two complete pewter plates and two small fragments of a plate were found in sections F, H and M. The plates have a diameter of 22 and 22.5 cm and a rim of 4 cm. No tin marks are visible.

The pestle of a mortar was found in section B (fig. 13). The pestle is made of copper or bronze, is very heavy, and has a length of 25 cm. It has pounding surfaces at both ends, separated by a ridge. One end is somewhat longer than the other (12.5 cm/11.5 cm), so the pestle can



Figure 13 Copper or bronze pestle for a mortar, 25 cm long (photo: T. Penders (RCE)).

be used by both large and small hands. Mortar and pestle are used by apothecaries and pharmacists to grind and pound hard spices and substances for drug preparations. The accompanying mortar has not been found in the wreck.

The function of two almost identical objects is unclear. The objects of 5.5 and 8.5 cm in length are made of copper and have a screw thread at one end (fig. 14).

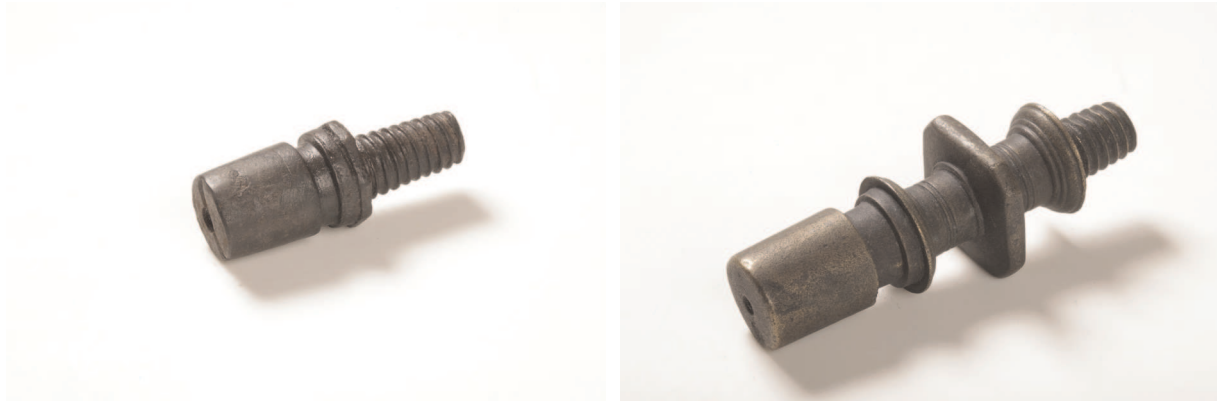


Figure 14 Two unidentified copper objects with screw thread ends. Length 5.5 and 8.5 cm respectively (photo: T. Penders (RCE)).

### 2.3 Later intrusions

Apart from the ship's equipment, armament and inventory, as well as the extensive cargo that will be discussed in Part III, some intrusive material was found. It consists of the inevitable net weights in all shapes and sizes, eleven sherds of recent glass and one small glass bottle, nine sherds of recent white and red earthenware and stoneware, a single brick, three bones and a recent yellow metal cringle. All these unrelated artefacts were found in excavation in the south-east area.

## 3 The Aanloop Molengat cargo

### 3.1 Introduction

The nature of the cargo was a decisive factor in the decision to systematically excavate and research the *Aanloop Molengat* site. It has remained the focus throughout the project. From the start a range of find categories has been subject to specialist research and interim reports. The present study is a synthesis of these and new studies, undertaken in conjunction with archiving the assemblage in the National Depot for Ship Archaeology and integration of the documentation in the e-depot for Dutch archaeology (EDNA). In all, over 3000 objects have been raised, under 1184 individual find numbers. The assemblage will be discussed category by category, starting with the heavy shipments and approximately following the stowage plan.

### 3.2 Lead in rough ingots

Lead ingots have been found at the southeastern end of the site, which is the aft end of the ship. The ingots had carefully been stowed in a single layer directly on top of the ceiling planks (fig. 15). Many rested in their stowing position, with wrought-iron staves on top. Others were found to be lying in the sand, but their pattern of stowage is still recognisable. In total, 167 ingots have been recovered in excavation. Three others are known to be held by a local diver; in total more than 200 have been observed.

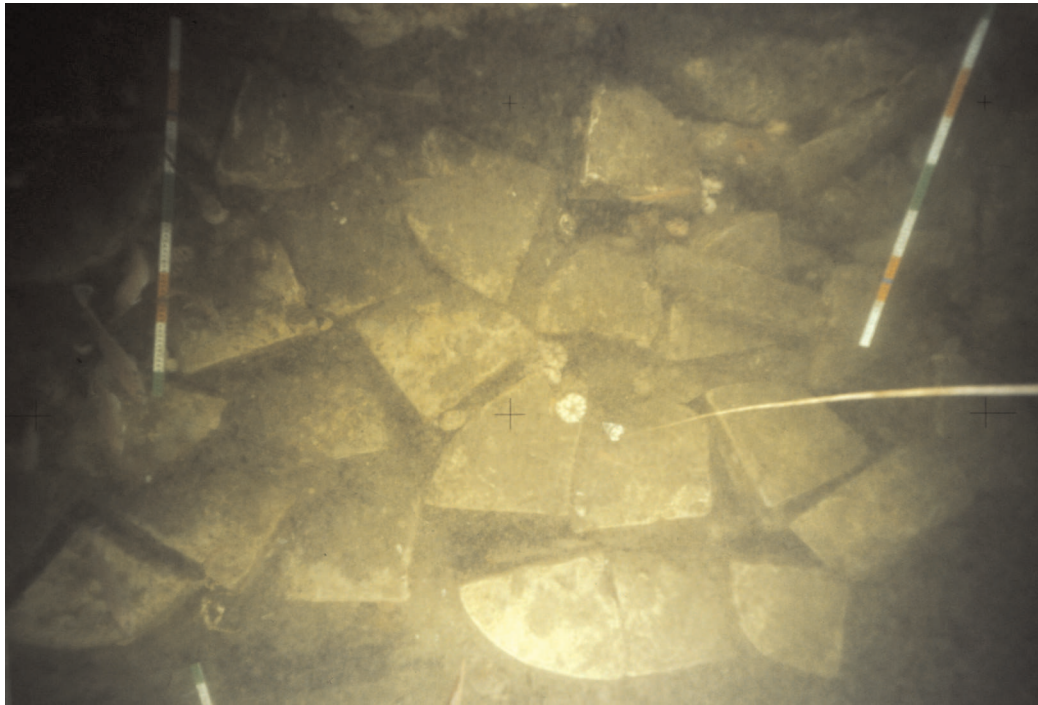


Figure 15 The *wegde*-shaped and angular ingots were carefully stowed in a single layer in the depth of the hold, directly on top of the ceiling (photo: P. Stassen (RCE)).

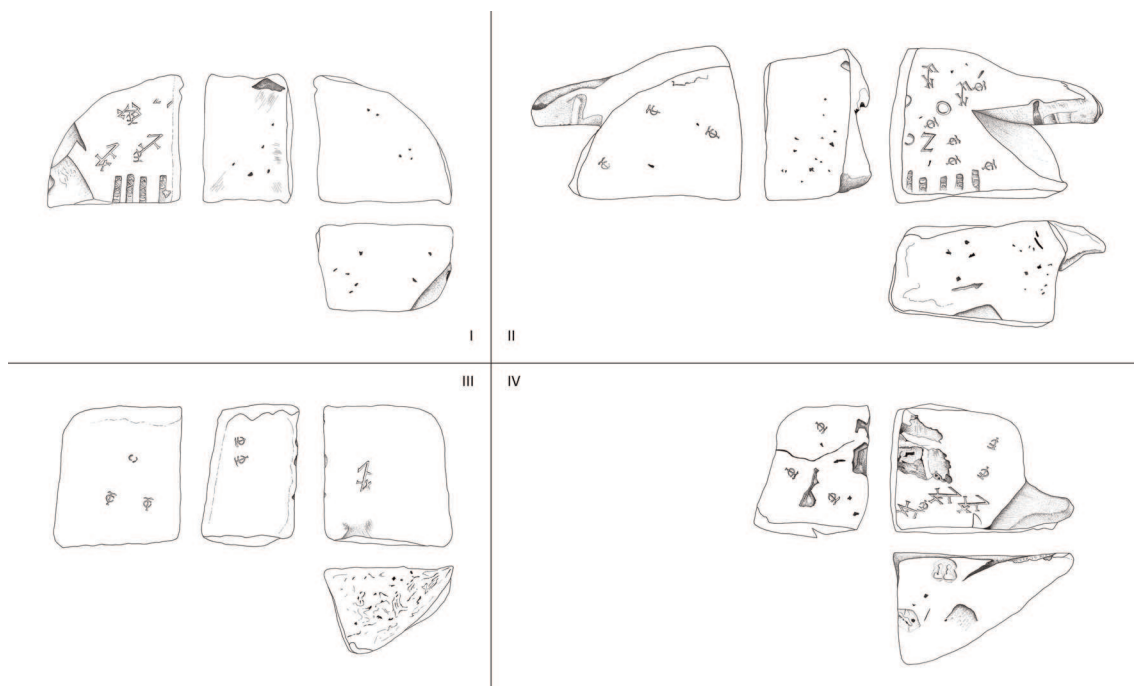


Figure 16 Four types of ingots (drawing: Jan Nederlof).

The excavated ingots are wedge-shaped or roughly angular (fig. 16). They are about 24 to 33 cm long and wide and 11 to 23 cm thick (av. 17 cm). They vary between 57 and 156 kg in weight, with a total weight of 16851.5 kg (n=165) (Chart 4). Most ingots fall into the range 90-120 kg, and the average is 102.1 kg. The investigated ingots represent a considerable part of the original shipment. If ingots are packed under the full extent of cemented iron bars that remain *in situ*, the excavated sample would be more than 30%. This is unlikely, however. Nevertheless, it is highly probable that the layer extends right up to the northwestern-most observation (between datum points 22 and 27). In that case it is unlikely that the sample represents much less than 50%. The total weight of the shipment is estimated to be in the range of 30 to 50 tons.

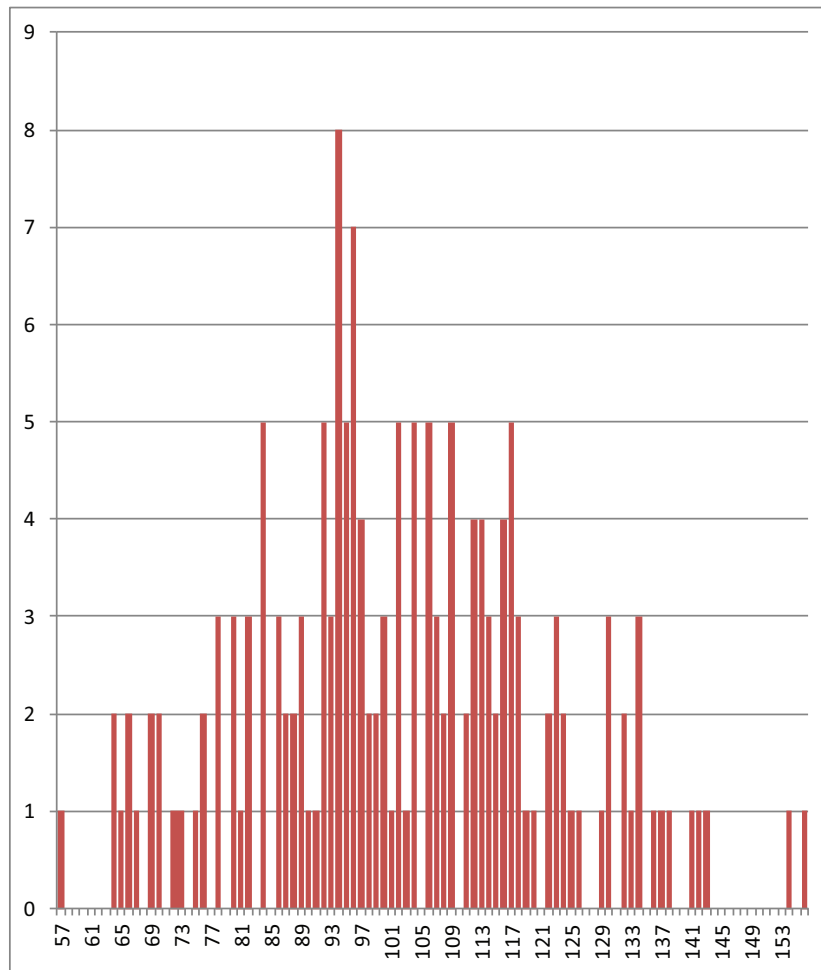


Chart 4 Weight distribution of the lead ingots.

All ingots have smooth upper faces and rough bottom faces, suggesting they were made in a mould, dug out in the sand (Voormolen 1992, 20). The proportion of the wedge-shaped ones to the angular ones is 148 to 22 (n=170), which means that on average one rectangle occurs for every 6.7 wedges. Although this would mean that the angular ingots are strongly underrepresented in the sample, it seems likely that the lead was cast in an oval-shaped mould, after which the master ingot was cut into six parts (fig. 17) (Voormolen 1992, 21). The sides are smooth and do not display cutting marks.

Some ingots, both wedge-shaped and rectangular, have been incised, causing one corner to protrude (see fig. 16). The ingots with a notch occur in the proportion of 34 to 136 (n=170), which means one notched ingot to four regular ingots, suggesting that only one notch was applied to a master ingot (Chart 5). The notch was probably used to remove the master ingot of about 600 kg from the mould (Voormolen 1992, 22).



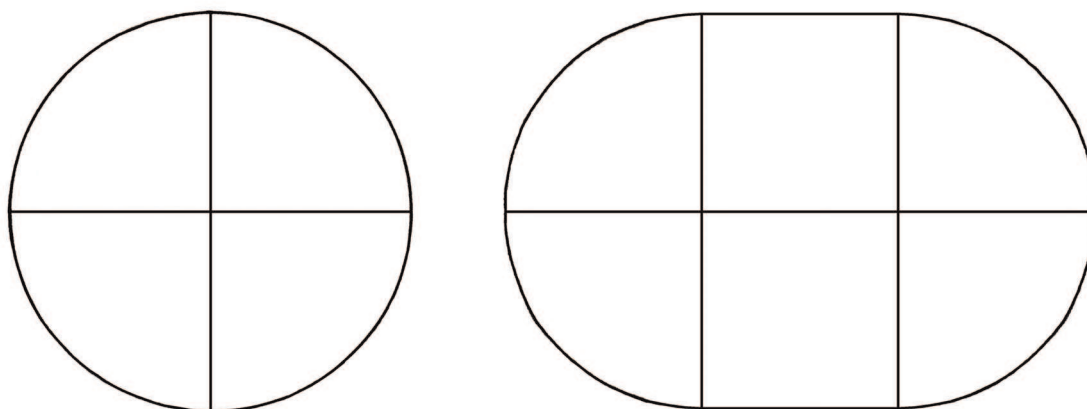


Figure 17 Hypothetical forms of master ingot (drawing after: B. Voormolen (RCE)).

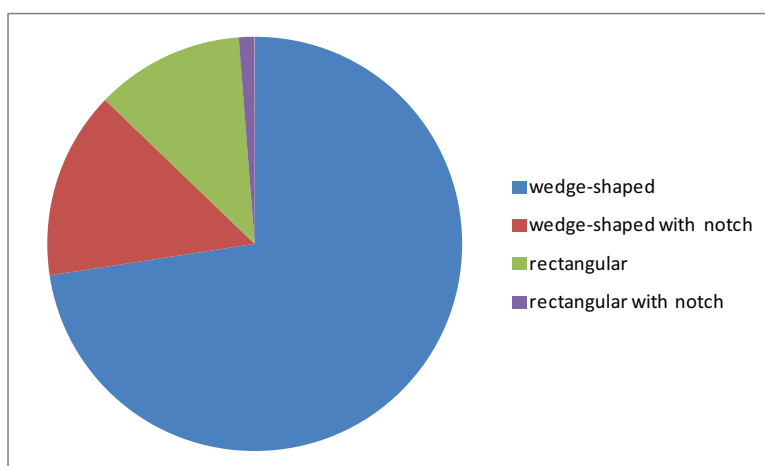


Chart 5 Distribution of the four different shapes of the lead ingots.

Invariably, the ingots display a number of small square dents, ending in a point. These are the marks of hooks or lifting thongs, used for handling the ingots (Voormolen 1992, 29). Moreover, the ingots are freely struck with 17 different stamps (fig. 18). Only one stamp (A) is found on every single ingot, mostly more than once, up to a maximum of 43 times. It looks like a monogram of the letters T and C. An almost identical stamp was found on ingots in a Dutch ship built around AD 1531-1533 (Azier 2007, 79). It is uncertain whether it refers to a trading house or to quality. There seems to be no correlation between the weight and the type of stamps on an ingot. After A, the most frequent stamps are B (75 x) and E (49 x). All other stamps occur two to eight times. The wedge-shaped ingots with a notch have the largest variety of stamps, up to six different ones. As stamps occur on all surfaces including the sides, at least some of them were applied after the master ingot was divided into parts. Most marks seem to be merchants' marks, of which thousands were in circulation in the 17th century. They may refer to a producer, trader, or merchant house (Kits Nieuwenkamp 1955).

Mark I is a cartouche with a Maltese cross; mark J is similarly designed but it is unclear what it depicts. Mark P is also a cartouche and displays a crowned eagle. These cartouches have a heraldic touch and may refer to the area and organisation of production. This is further corroborated by stamp E, which is a rectangular cartouche with the capitals ILKUS, a spelling variant of 'Olkusz', a town in Lesser Poland.<sup>3</sup> From the end of the 16th to the beginning of the 18th century, Olkusz was by far the most important lead-producing centre in Poland (Molenda 1963,



Figure 18 Stamp types on lead ingots. In the text the images are indicated with capital letters, A-D in the top row, E-H in the second row, I-L in the third, and M-Q in the last row (drawing: B. Voormolen/A. Overmeer (RCE)).

1972). Isotopic analysis, in which the composition of 14 ingots was compared with 12 samples of galena (the natural mineral form of lead sulphide, the most important lead ore mineral) from the lead-zinc-silver mines of the Olkusz region, supports this identification (Clayton et al. 2002, 303 & 307; table 2). The normal pattern of the Olkusz trade was from Krakau (Kraków) along the Vistula to Danzig (Gdąnsk) on the Baltic (Molenda 2001, 88ff.).

The *Aanloop Molengat* type of ingot is not previously known from literature and does not figure in Willies' (1982) typology. Similar, but not identical, are two ingots found off Cape Arkona in the Baltic (Förster 1994, 59). The *Aanloop Molengat* finds enabled Molenda (2001, 22-23) to correlate with a single ingot find from medieval Novgorod and to explain the variety of master ingots and their partitioning into four or six sections (*secatio plumbi*, in the sources). The average weight of the *Aanloop Molengat* master ingots of about 600 kg corresponds to ten *centner* (hundredweight). This correlates well with the information from which time series of production were derived, but 6, 8 or 12 hundredweight casts were apparently also applied. The notches are indeed explained as primarily for tackling and handling the master ingots. Interestingly, Molenda mentions the strategic quality of lead and prohibitions on its export during periods of war (Molenda 2001, 36). Evidently, exceptions drove production as well as trade.

A recent find on the coast of Namibia, the *Oranjemund* shipwreck cargo, includes a shipment of lead that appears to be very similar to the *Aanloop Molengat* assemblage. The published photograph seems to display both wedge-shaped and rectangular ingots with and without incisions. Their weight varies between 70 and 156 kg (Chirikure et al. 2010). Although stamps and seals are mentioned, only one unidentified seal is published. The assemblage is thought to predate *Aanloop Molengat* by a hundred years. A study of the stamps and isotopic composition may clarify whether it comes from the same source. Considering the ingot type, it is probable

that the *Oranjemund* shipment, like the ingots of *Aanloop Molengat*, represents primary production. It is tempting to suggest that it was produced in Lesser Poland.

### 3.3 Iron in bars

Wrought-iron bars make up a large part of the cargo. Although oxidation is limited, the bars are cemented together in a continuous concretion (fig. 19). The bulk is 17.0 m long and varies between 6.30 and 7.50 m in width. At the southeastern end it has a central extension of 3.35 m, which is only 1.70 to 2.60 m wide. The pack is 30 to 60 cm thick along its sides. Several fissures occur in the concretion, notably a large lengthwise crack and a crack at right angles midway. Although the cracks may reflect some discontinuities in packing, they were specifically inspected for evidence of bundling in batches. As no such bundling has been observed, the breaks apparently occurred during the formation of the wreck site. No bars are folded as in the cargo of the *Gresham Ship* of half a century earlier (Auer & Firth 2007). The bars are tightly packed. The total weight of the shipment is estimated at more than 500 tons.<sup>4</sup>

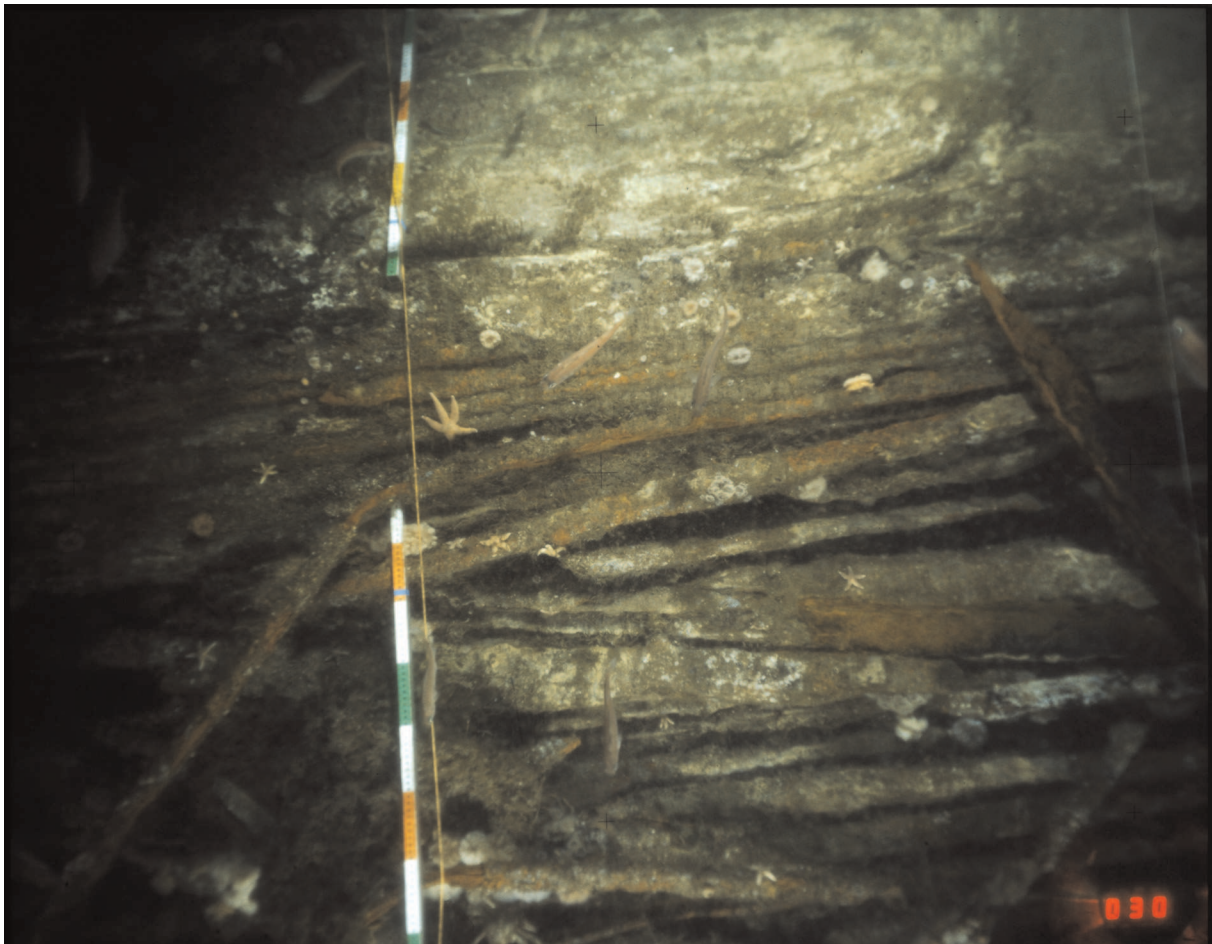


Figure 19 Vertical view of wrought iron bars at the wreck-site (photo: P. Stassen (RCE)).

Most bars are rectangular in cross-section, 6 cm wide and 1.5-2 cm thick. Some are square with dimensions of 3.5 x 3.5 cm. Individual bars are at least 2.5 to 3.5 m long. The excavation did not interfere with the consolidated and concreted mass of this part of the cargo. Only eleven loose-lying bars were recovered. Samples show that the iron is in excellent condition (fig. 20). No marks were found on them.



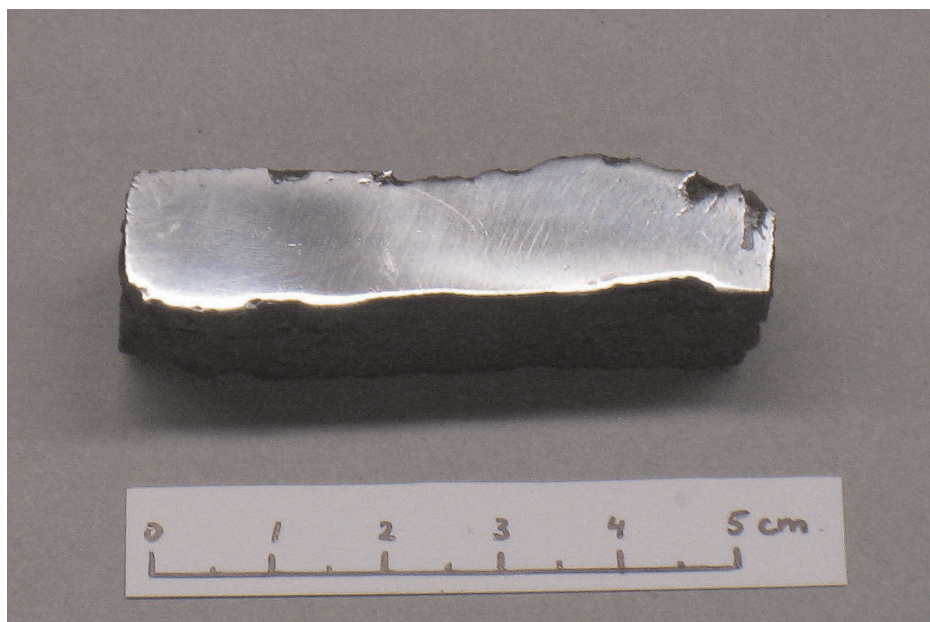


Figure 20 A section of an iron bar shows the metal to be of excellent quality and preservation (photo: A. Overmeer (RCE)).

In order to define production and determine or exclude provenance, a sample was taken of iron bar AM-1999-73 for metallurgical analysis by Joosten & Nienhuis (2012). Iron and slag inclusions were analysed by energy-dispersive X-ray analysis (EDX, ThermoScientific, NSS) in a scanning electron microscope (SEM, JSM5910LV). Carbon content is 0.7% of the weight, which is appropriate for wrought-iron. The iron contains around 1% of small slag inclusions that are aligned as a result of folding during forging. The core of the sample is ferrite; the cover is steel. This might indicate that the wrought-iron is carbon-enriched in a specialised furnace (Tylecote 1992). Most of the inclusions consist of one phase, fayalite, a glass low in iron and high in calcium, wüstite or quartz. Some inclusions consist of two phases, mainly fayalite and glass. The ratio between  $\text{SiO}_2/\text{Al}_2\text{O}_3$  indicates that some inclusions derive from additions, i.e. sand, during the post-smelting phase. In plotting the major element composition of the rest of the inclusions in a diagram distinguishing the direct from the indirect processes (Dillmann et al. 2007), it is shown that they most probably derive from the direct process. The low manganese and phosphorus content of the inclusions excludes production from high manganese and phosphorus ores.

Iron was produced in the Low Countries, but not on a scale to assume wholesale export; rather, it was imports from Sweden that satisfied the demand (Kuiper 2006, 65; Gawronski 1996, 281). The provenance of the wrought-iron bars might effectively be Sweden, which is known for exporting low-phosphorus steel in the period (Pleiner 2000). Witsen (1671, 119) discusses iron bars, their markings and relative qualities and refers to 'steel' from Nuremberg as being 10% more valuable than 'Swedish steel'. Present research does not permit a final characterisation. No markings have been identified and the relative manganese and phosphorus content of ores exploited in the 17th century, including those from Sweden and Bavaria, has not been studied comprehensively. Archaeological parallels are few. The bars in the 'Gresham ship' of the outgoing 16th century (Auer & Firth 2007) derive – at least partly – from a manganese-rich and therefore different source (Birch 2010; Birch & Martín-Torres *forthcoming*). An adequate comparison for the 17th century is BZN2/BZN15 (Vos 2012), whereas the *Hollandia* and the *Sophia Albertina* provide similar material for the 18th century (Gawronski 1996; Overmeer 2012).



Figure 21 A characteristic barrel with tin rolls, on top of the wreck-mound. Barrel construction could not be studied in detail. The observed staves and head pieces are spruce (*Picea* sp., determination Y. Vorst, RCE). Each barrel must have contained approximately 80 tin rolls, giving it a weight close to 400 kg (photo: A. Vos (RCE)).

### 3.4 Tin in rolls, packed in barrels

At the southeastern end, a tier of spruce barrels was stacked on top of the wrought-iron bars. These barrels had broken up and their contents had been dispersed, but their bases and some of their contents were still found in their original position at the top of the wreck mound (fig. 21). The barrels contained tin in a typical form of roughly cast sheets, rolled in a rough cylinder, approximately 40 cm long (fig. 22). The weight of the rolls varies considerably and is 4.727 kg on average. Some rolls are preserved in excellent condition, others have decayed and eroded. In total 1514 kg of tin has been excavated, deriving from a minimum number of 359 rolls. An interesting bonus is a few pieces that can be interpreted as quality samples (fig. 23) rather than ordinary production (cf. Reinheckel 2002, 29). The total weight of the shipment, including barrels, must have been at least two tons.

The sheets generally have three marks, applied with a die in a molten appliqué. Twenty-four different dies have been identified. The images include a range of heraldic symbols, years, monograms and words in German, for instance: 'SEIFFEN\*ZIN\*VON\*DER\*PLATEN'. In 1988, the general provenance and probable quality ('Drei-Zeichen-Zinn') was established with the help of the *Sektion Bergbauforschung des Kulturbundes der DDR, Ortsgruppe Seiffen*. 'Seiffen' does not refer to the town in Saxony, but 'Platen' refers to Horní Blatná on the southern flank of the Erzgebirge/Krušné Hory (Ore Mountains), in the present-day Czech Republic, which was called 'Platten' under Bohemian rule. Vítězslav Bartoš (1994), a local historian from the city of Karlovy Vary, correlated the marks with individual mines. Besides the mines of Platten/Horní Blatná, these include the mines of nearby Seifen/Rýžovna, Hengst(er)erben/Hřebečná and





Figure 22 A typical roll of tin (AM-7.8.3) with marks from Horní Blatná, length 42 cm, weight 4210 g (photo: T. Penders (RCE)).



Figure 23 A quality sample of tin (AM-1999-56), weight 345 g, width 9 cm (photo: T. Penders (RCE)).

Gottesgab/Boží Dar. A smaller portion derives from Eibenstock in Saxony on the northern flank of the Erzgebirge. As five more dies have been recognised since 1994, some tin may derive from other locations that have not been identified.





Figure 24 *Seifen* extraction pits and waste dumps near Horní Blatná (photo: Th. Maarleveld, Oct. 1989 (RCE)).

In the Erzgebirge, tin ore (cassiterite) was primarily extracted from *Seifen*, a term that refers to alluvial placer deposits (fig. 24). Water was used extensively to sort and rinse the ore. It is the simplest method of extraction and produces the purest ore. Subsurface mining only took place once alluvial deposits were exhausted (Hedges 1964, 13). Operations in the Erzgebirge are extensively and analytically described by Georgius Agricola (1556) (fig. 25), who lived in Anna-berg in Saxony and had first-hand knowledge of the works. He does not specifically refer to Horní Blatná, but mentions nearby Joachimsthal/Jachymow. Tin from contaminated ore was



Figure 25 Plates from Agricola's *De Re Metallica* of 1556. From left to right, a: *seifen* extraction and washing in a diverted stream, book VII; b: pouring fluid tin on a thick copper plate in a lattice pattern; c: the lattice sheets are rolled with a wooden mallet, book IX (from: Hoover&Hoover 1950, 337, 415, 418).

usually cast in bun ingots that could be smelted for further refining. This was unnecessary for *Seifenzinn*: . . . ‘if the metal is pure, it is poured immediately upon thick copper plates, at first in straight lines and then transversely over these to make a lattice’ (Agricola 1556, book IX; transl. Hoover & Hoover 1950, 414). An experienced smelter could separate any contaminations immediately and the quality was tested visually while pouring (pers.comm. Dr Christoph Bartels, 2011). Unrolled sheets from *Aanloop Molengat* reflect the lattice pattern that Agricola describes (fig. 26). After a sheet was rolled with a wooden mallet, each roll was impressed with an iron die. According to Agricola, low-quality tin had one mark, while *Seifenzinn* had two. The rolls from Eibenstock reflect this. The rolls from the Bohemian production centres all have three marks: two regional denominations, patented by the crown,<sup>5</sup> and a producer’s mark. Although the third mark was probably introduced to suggest even better quality, and although that suggestion is attractive to Bartoš (1994, 2), analysis with XRF shows a tin content of more than 99% for Bohemian and Saxon products alike. This high quality means that the metal could be used for many alloys and purposes, including high-quality cannon bronze and pewter finewares (Kellenbenz 1987; Dubbe 1978).

The stamps feature dates in the range from 1556 to 1630. Evidently they refer to the dates when the patent was established or the trading and production house was founded and the die was made. It is likely that the tin was produced shortly after 1630. As a result of the Thirty Years’ War (1618-1648), production in the area had fallen considerably, but *Aanloop Molengat* shows that it still had its share of the international market (Kellenbenz 1987). Despite the war that profoundly affected the region in those years, it is likely that the tin was collected in the staples of Nuremberg or Leipzig, where the important entrepreneurs in the German tin trade were established. Prices had risen steeply in response to armament demand (Bartoš 1994). The Peace of Prague (30 May 1635) may have been a good occasion to resume trade, but the Main-Rhine route through to Amsterdam was frequently blocked and continued to be impeded



Figure 26 An unrolled sheet (AM-2/3.01.2.4.16) clearly shows that fluid tin was poured on a (copper) plate in the way Agricola describes. The sheet measures 40 x 70 cm (photo: T. Penders (RCE)).



after the blockades of 1634-1635 (Haller von Hallerstein 1975, 63; Israel 1980, 473-475). It is therefore likely that the Elbe route through Hamburg was followed. The fact that this route was not uncommon is illustrated by a decree of 1613 establishing the wages of skippers transporting 'tin in barrels' from Hamburg to Amsterdam (van Dillen 1929, 44-47). A source relating to a dispute on tin quality involving Leiden tinsmiths refers to Hengst(erben) as one of the sources of tin in rolls (Anon. 1592). At what point *en route* the rolls were packed in barrels is



Figure 27 The bale of bovine hides that had abraded most at the top was not dismantled. As most of the objects recovered from the Aanloop Molengat site, it is exposed in the National Depot for Ship Archaeology in Lelystad, the Netherlands (photo: T. Penders (RCE)).



Figure 28 Fragment of matting that was used in wrapping the hide in bales (photo: J. Nientker (RCE)).



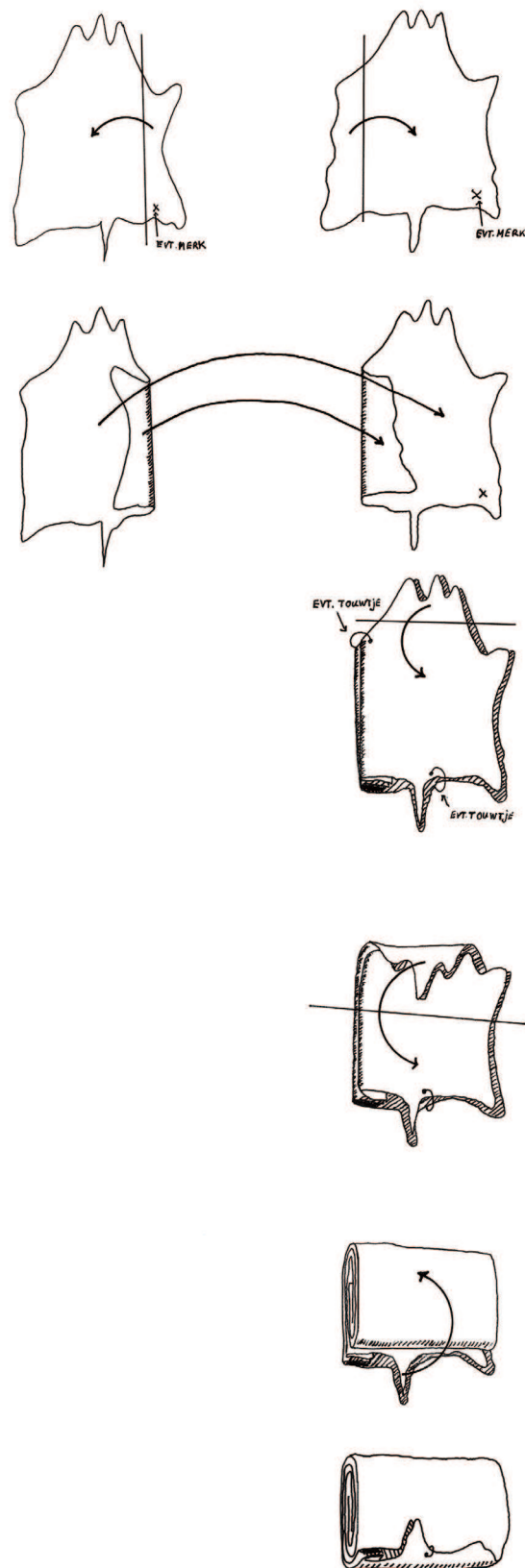


Figure 29 Folding method of the hides, as reconstructed by Stikker and Kleij (drawing: P. Kleij (RCE)).

unclear. It cannot have been at the site of production. Several assemblages of rolls were found in close association, either with the remains of their barrel or cemented together. Not all rolls in

these assemblages had the same marks. They must have been packed at a middleman's or conveyor's entrepôt. With 70 to 90 rolls in each barrel, we are dealing with a shipment of four, five or six barrels in total.

### 3.5 *Bovine hides, in bales*

Adjoining the tin barrels, bales of leather were stacked in a cross-ships tier on top of the wrought-iron bars, with a few wooden stakes in between (Blok *forthcoming*). Two bales were found in their stowage position. One bale was found off the wreck mound. The bales had been stowed lengthwise on their sides, with the hides vertically. The hides in all three bales were smoothly abraded along the top, indicating that they had been exposed for some time and that the third bale had only recently broken away (see fig. 3). For the central bale, abrasion is very limited, thus allowing the composition and folding to be analysed. Each bale originally measured 180 x 150 x 80 cm and was packed in matting (figs. 27 and 28). The hides were tanned and were all bovine. Two hides, sometimes joined with a string, were folded together to form a bundle (fig. 29) (Kleij 1992b, 18-22). Each bale contained 60-65 bundles, approximately 375 hides in all. The density of leather is approximately 945 kg/m<sup>3</sup>, so the three bales would have weighed little less than two tons.

Close scrutiny by Stikker (1988; 1991) and Kleij (1992b) revealed the characteristics of the cattle and of the processing the hides had been subjected to. Teats, for instance, were visible and cows and bulls (or oxen) are represented in equal quantities, both old and young.

The cattle are small beef stock with a shoulder height of approximately 130 cm. The method of slaughtering varied, with most having a lengthwise incision at the throat. Others had a crosscut, which is characteristic, for instance, of Jewish and Islamic slaughtering. About one third of the hides displayed skinning cuts, some of them stitched up with botanical fibres. Stretching holes of 1 cm were cut approximately four cm from the edge and six cm apart. Several hides had a mark on the tail or right buttock, of which the meaning remains unresolved (fig. 30).

The find is exceptional and knowledge of this raw material for leatherworking is not common. The expertise of the late W.B. van Herwijnen, formerly of TNO leather research institute in Waalwijk, proved invaluable. Author of a book on leather technology in the 1950s (van Herwijnen 1956), Van Herwijnen had been involved throughout his career in the quality assessment of leather from different sources and of tanning processes. He assessed the *Aanloop Molengat* hides as being of mediocre but varying quality. The preparation and tanning processes had not been meticulous. Skinning and cropping had been done roughly. Graining, a lengthy process of removing the hair with lime or flowing water, cleaning the inner side and curing the outer side with dog or bird excrement to make them supple, had left occasional patches of black or dark red hair. The inner and outer surfaces were well-tanned, but the interior was not. As a consequence, many hides split. The hides had been tanned with botanical tanning agents, coarsely diffused in water. The product suggests simple tan pits with a mix of oak, horse chestnut and chestnut barks as tanning agents, possibly enriched with mimosa or sumac. Long exposure to seawater has partly reversed the tanning process. Stretching holes indicate the final flattening, cleaning and possibly greasing of the sheets, but are cut irregularly.

The leather should be considered half-finished, to be curried (and possibly re-tanned) on arrival. Despite the varying quality of the individual sheets, the overall composition of the bales seems to be uniform (Kleij 1992b, 39). This indicates that production was dispersed and the shipment was gathered and purchased through a middleman.

The leather industry and commerce in the Low Countries processed hides not only from local tanneries, but also from Scandinavia, Germany, England, Spain and (from the early 17th century) Africa and America (Baart 1977, 69-71). On the basis of texture, grain, size and

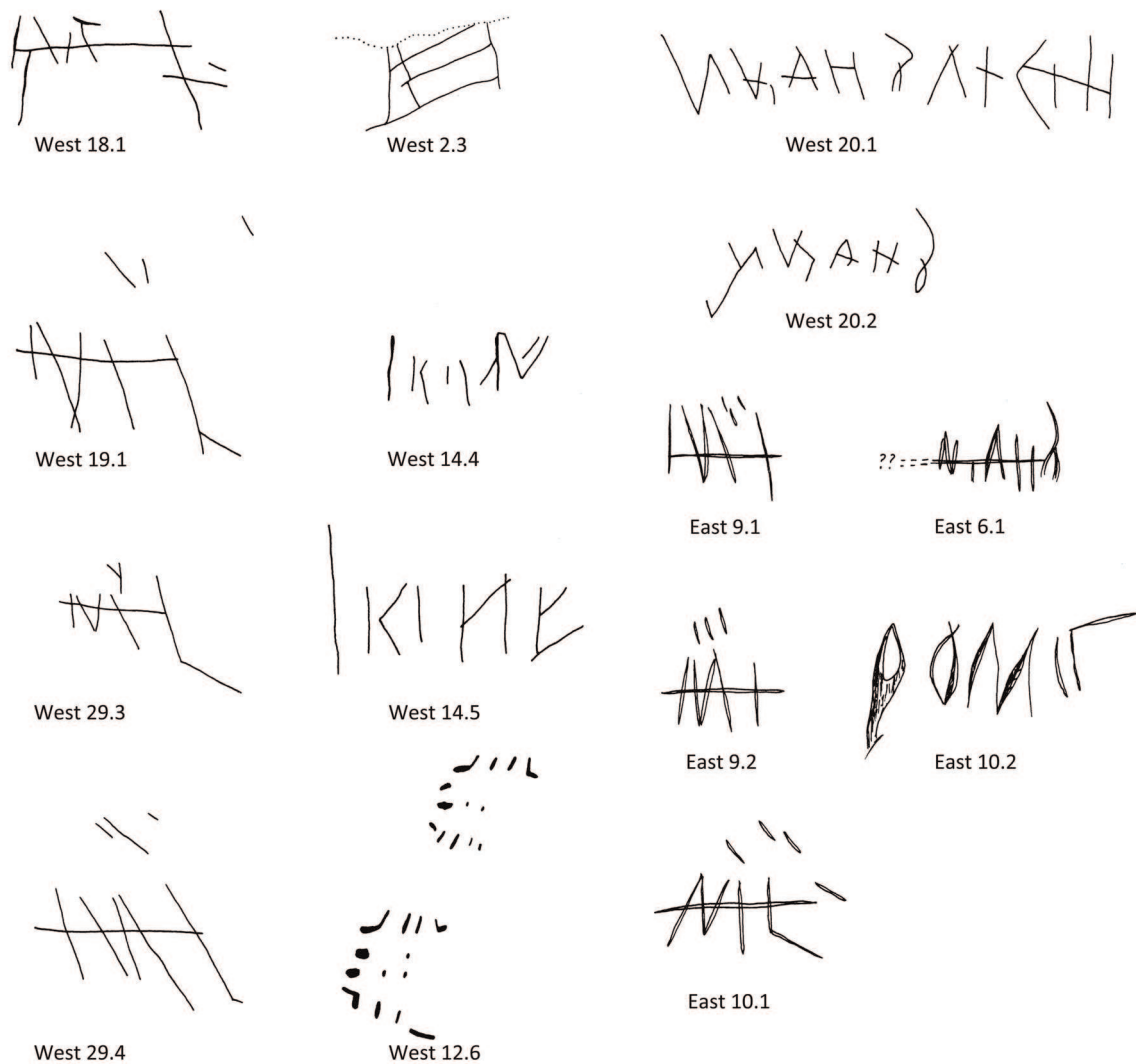


Figure 30 Several marks on tail or right buttock from bales AM-1/2.01.2.1 West and AM-1/2.01.3.1 East (drawing: N. Stikker/P. Kleij (RCE)).

tanning, Van Herwijnen assumed a provenance from southern Europe, more specifically Spain. South America is another possibility (Kleij 1992b, 40). During the years 1630-1650 Amsterdam boasted a lively trade in 'West-Indian' (Southern American) hides.

In order to try and establish the breeding and provenance (Lenstra 2009), six samples of cattle hide were submitted for DNA research in 2011. They included material to which hairs adhered. The samples were examined by F. Welker using the facilities of NCB Naturalis (Welker et al. *forthcoming*). Only low concentrations of human DNA were found, and it is unclear whether these are contemporary or a recent contamination.

The fibres used to stitch the cuts and the matting in which the leather was packed were studied to identify the plant species used. The fibres derived from woody species or bark, possibly alder or willow, which are very common species. The matting possibly derived from broad-leaved cottongrass (*Eriophorum latifolium*), which is native to raised bogs and has not previously been identified as packing material (Brinkkemper & Joosten 2012; HyperlinkBrink). The outermost layer of cells (epidermis) was too poorly preserved to allow certain identification. Cottongrass occurs in large parts of Europe, and since the identification is uncertain, no inferences can be made regarding the origin of the bovine hides.



### 3.6 Textiles, with lead cloth seals

A total of 101 lead cloth seals have been found. Most were discovered in a wide spread in the excavation squares southeast of the wreck mound; a single one was found in the southwestern trial trench of 1985. This first seal comes from Mons in Hainaut and is provisionally interpreted as marking cloth of ordinary quality (Maarleveld 1988). On hindsight the seal is not as representative as then assumed. Only one other 'Mons' seal has shown up, as against 26 from Leiden, three from Delft, and ten from Hondschoote in the 'Westhoek' of Flanders (fig. 31). This means that the most important production centres of the Republic and of the Spanish Netherlands are represented. Another 16 cloth seals remain unidentified, whereas 44 merchant marks refer to individual merchants.

Frank van Deijk, who specialises in Leiden industry, undertook a study of these objects from that perspective. The collection is presented here for reference, without individual marks having been explored in full. It must be assumed that the seals were attached to cloth that had been packed and stowed in the hold, on top of the heavy and more durable cargo and which decayed more or less on site, rather than being swept away with the ship's upper parts.

A small cloth sample, enclosed in a seal from Delft, is the only textile that remained. Cloth seals are small, and many may have gone unnoticed in the excavation of shifting sands. The number of seals suggests that they represent a considerable shipment, but this is hard to assess. It is also impossible to say where exactly the bales were stowed, or whether the bales from the Northern Netherlands were stowed together or separately from the consignments that left fewer traces.



Figure 31 Lead cloth seals from (from left to right) Leiden, Delft, Hondschoote and Mons (photo: T. Penders (RCE)).

Leiden's wool-based textile industry has been fairly well studied (Posthumus 1939; van Deijk 1993). Since the 1580s, it was organised in large corporations (*neringen*) that saw to the production of a specific kind of fabric. Each had its own type of cloth seal. Of the *Aanloop Molengat* seals, 26 were issued by the *saainering*, which was Leiden's main trade until 1660. There is a striking similarity with woodcut images of seals and stamps in the organisation's 1594 by-laws. In combination with other evidence, it is certain that all seals with the inscription LEYDS GVET (Leiden cloth) must originally have been attached to either 'saye' (*saai*) or 'grosgrain' (*grein* or *grogrein*). Both are non-felted fabrics. Saye (or serge) is woven in a twill pattern (*keper*) from strong worsted (*kamgaren*). Grosgrain is a plain woven fabric with a ribbed appearance as a result of the weft being thicker than the warp. In Leiden grosgrain, the warp is twined. The wool for both products was obtained from Scotland, Pomerania and Holland.

Unlike many of the merchant seals, the Leiden *saainering* seals have one pin. Although this does not show in the published photographs, the almost identical seals from the *Wittenbergen* wreck in the Elbe have two pins (Bracker 1986). This corroborates their 16th-century dating (Stanek 2011). Double-pin seals were prevalent up until 1593. A 1594 by-law made single-pin seals the norm (Posthumus 1912, 238). The dies used for the *Aanloop Molengat* seals show variations that are hitherto unknown. The obverse shield normally has a round base, but here a more Renaissance-style shield also appears. Varieties of the reverse are more significant. In 1630 it became obligatory to mark the year.<sup>6</sup> The most common reverse consistently includes the date 1635, divided either side of a rampant lion (see fig. 43). The imprint of another die has the inscription '[an]no 16[.].', the year being unclear. The third type probably also had a date.

It is not just the type of seal, however, which primarily indicated the type and quality of the fabric produced under control of the *saainering*, but rather their number (up to five) and spacing. A saye fragment with three seals, found in Amsterdam, illustrates the system (Baart 1988). Luckily, there are some additional clues, for instance counter-stamped tally marks that indicate the length in Brabant *ells* (69.8 cm). Each cloth received one tally mark only. Six seals have a mark for 36 cubits (approx. 25.13 m). The by-laws give standards for gross length, before finishing would cause shrinkage. The closest match is for *herensaai*, the top-quality product. This fabric would have had about 20 threads per cm width. Other counter stamps give an indication of grades of quality: L stands for first quality (three seals), X for second quality (two seals). One seal is special. It also bears a 'split eagle' mark (fig. 32). The eagle marks of the Leiden *saainering* point to different qualities of blue woad dye as a basis for black (one eagle), light violet (split eagle) or deep violet (double eagle). They were used for *herensaai* and *grein/grogrein* exclusively and thus support the conclusion on the basis of the tally marks (Posthumus 1914, 60 (par. 21), 69, (par. 64), 70 (par. 80), 75 (par. 101); Posthumus 1939, 1176).



Figure 32 Split eagle tally mark on a Leiden cloth seal AM-H-28, indicating the light-violet color of the fabric. A similar split eagle was found on a cloth seal from Delft (photo: T. Penders (RCE)).



Figure 33 Sample of fabric (AM-1993-65-5), twill, woven from worsted. Length is 1.5 cm (photo: T. Penders (RCE)).

The Delft seals can be discussed more briefly. A sample of fabric was taken from one of these. Again we find twill, woven from worsted (fig. 33) (Nientker 2011 [HyperlinkNientker](#)). This means we are dealing with Delft *saai*. Its production started in 1595-96, when ten Leiden drapers moved to Delft, much to Leiden's chagrin (Posthumus 1912, 249-271, 273-274). High-performance liquid chromatography shows that the dye used was derived from woad or indigo, madder and a third, unidentified colouring agent (at a very low concentration). New, the fabric was probably purple (van Bommel & Joosten 2012 [HyperlinkBommelJoosten](#)). Interestingly, another Delft seal has a 'split eagle' counter stamp. According to regulations from the 1640s, Delft *saai* had to be dyed in Leiden. Earlier rulings remain unclear, but the present find seems to indicate that this had been standing practice.

The Hondschoote textile industry has been the subject of one of the classic studies in the French Annales School of socioeconomic history (Coornaert 1930). Like Leiden, Hondschoote produced cloth of different qualities. Both were at the peak of their production at the time of the *Aanloop Molengat* wreck (Deyon 1972, 26). In both cities, the emphasis seems to have been on different qualities of sayes and regulations are particularly comprehensive for the highest quality of *doucques* and *sayes de seigneurs* (Coornaert, 216ff.). Although it is therefore quite possible that the Hondschoote consignment matched the quality of the *herensaai* from Leiden, we cannot establish the connection between the actual lead cloth seals and the quality they represent. By comparison with Leiden and Hondschoote, the industry of Hainaut – and specifically that of Mons – has been less well-studied, as a major part of the relevant archives were destroyed in May 1940 (Verriest 1942a; Verriest 1942b). Assumptions about the type of fabric represented by the Mons seals are therefore hard to corroborate.

The cargo contained textiles produced in urban industries in Holland, Flanders and Hainaut. It is not known how much or whether these were packed together or separately. What is known is that the shipment included at least six, but more likely ten, pieces of *herensaai* produced in Leiden. Four were certainly of first quality (including a light violet one), another four were presumably first quality, and two were of second quality. It can be assumed that all these pieces were dyed, which was compulsory for *herensaai*. After being folded into a square and placed in a large heated press, the sides were stitched together using a silk thread. There was



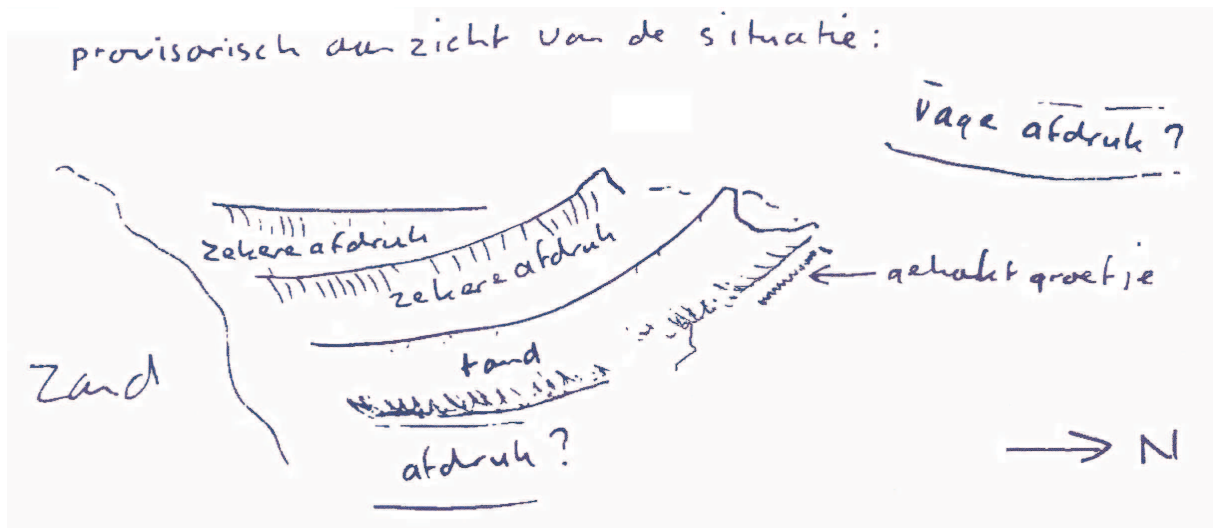


Figure 34 In situ sketch of the elephant tusk (tand) and impressions (afdruk) around it (from: Divereport Maarleveld 10-07-1992).



Figure 35 Elephant tusk in situ in iron concretion (photo: A. Vos (RCE)).

also purple *saai* that had been produced in Delft and dyed in Leiden, and Hondschoote textiles that may well have been sayes of similar quality. It is no more than an assumption that the cloth from Mons was ordinary.

### 3.7 Ivory

A large elephant tusk was found firmly cemented to the top and side of the iron bulk, close to its northern corner (at 21.5 m). The concretion features the impressions of at least two more tusks (fig. 34). The tusk has a diameter of about 13 cm at its base, and a length of more than 1.15 m (fig. 35). Only large African elephants have tusks of that size (Rijkelijkhuizen 2011, table 2).

Since its establishment in 1621, the West India Company was the main importer of ivory to the Dutch Republic (Rijkelijkhuizen 2011, 228). Elephant tusks were obtained from the Gold Coast in West Africa, present-day Ghana, particularly at Fort Nassau and Elmina. The Dutch did not hunt elephants themselves, but depended on the African inhabitants to bring tusks from far afield, perhaps even from East Africa (Rijkelijkhuizen 2011, 230). Ivory was used by craftsmen in the Dutch Republic for all sorts of purposes – lice combs, knife handles, toys, items for personal care, knitting and needlework items, parts of musical instruments, dice, fans, brushes, needles, piano keys, buttons, syringes, boxes and inlay for furniture and weaponry (Rijkelijkhuizen 2009, 427) – and was sold at one guilder a pound (den Heijer 1997, 135). It was also exported, for instance to Asia, where large African elephant tusks were highly valued.

### 3.8 Quicksilver, in bottles?

During the excavation, small beads of mercury were occasionally found, rolling in hollows in the sand, in the grooves of wrought-iron or adhering to brass pins. A few drops were collected (fig. 36), most of them together with pins. Although there was some apprehension with regard to the presence and handling of mercury (and lead), this did not lead to a precautionary regime in the excavation. Protective clothing and dive suits were evidently worn, and common sense



Figure 36 Mercury drop, collected from Aanloop Molengat (photo: T. Penders (RCE)).

in handling was relied upon. Although only small amounts were registered, these were found so dispersed that they must represent a considerable shipment.

Mercury or quicksilver is occasionally found in historical wrecks. It is relatively rare and expensive. Mined at various places in Europe, such as France, Austria, Hungary, Poland, Spain and the Balkan peninsula, it was used in thermometers and barometers, in making mirrors and felt hats. Large amounts were needed in metallurgical processes, notably the extraction of silver. Although it was traded over long distances, transport of the liquid and very heavy metal (density of 13546 kg/m<sup>3</sup>) was problematic.

In an 18th-century Spanish wreck off the Dominican Republic, a large consignment of mercury has been discovered in small casks packed in cases (Peterson 1979). Evidently, various containers were tried, as is reflected in successive directives of the Dutch East India Company VOC (Green 1977). In the 17th century it was shipped to Asia, probably to be used for the gilding of objects (Sténuît 1977, 441-443). It was also taken on board as part of the ship's pharmacy (Gawronski 1996, 212). In archaeological literature, Bellarmine jugs are referred to as the most common containers for mercury in the *Aanloop Molengat* period (Green 1977, 481). No sherds of such jugs were found. The only possible container elements in the assemblage are lead screw caps (fig. 37). Twenty-three caps were found, consisting of a lower part, which was attached to a glass bottle, and an upper part, which could be screwed onto the lower part. The caps have a diameter of 1.8 to 2.3 cm and a height of 2.0 to 2.4 cm. XRF measurements revealed mercury inside these caps, at the bottleneck (van Os 2011 [HyperlinkVan Os](#)). This mercury may have attached itself to the caps in the same way as it did to pins, but it would be more logical to assume that the mercury was stored and transported in glass bottles with lead screw caps. The same suggestion is made in relation to bottle caps and neck reinforcements of similar type in the assemblage from the *Lastdrager* that wrecked in 1653 (Sténuît 1977, 440).<sup>7</sup> It is notable that one of the 1636 VOC regulations recommends the use of square bottles in a case (Green 1977, 481). Although some glass was found, it is too little for reconstructing bottle form and size.



Figure 37 Screw cap with a sherd of glass. Although similar caps are generally referred to as pewter, these caps are 90 to 97% lead. Diameter cap is 3 cm (photo: T. Penders (RCE)).



Square capped storage bottles (*kelderflessen*) are known in sizes varying from 235 ml to 1.8 l or more (Henkes 1994, 236-244). If the caps sat on bottles of 1.2 litres, 23 bottles would account for approximately 375 kg of mercury. It is likely, however, that the 23 caps represent only a fraction of the total number of bottles.

### 3.9 Spices and seeds

In dismantling the bales of leather, hundreds of impressions of seeds were visible in the iron concretion, and a few uncharred round seeds could be recovered (Kleij 1992b, 17). The seeds had been hermetically sealed in between the hides and were therefore well preserved. The botanical remains were analysed by M. Manders and W.J. Kuijper at the Institute for Prehistory, Leiden University.

The spherical seeds are the most conspicuous (fig. 38). They are identified as black pepper (*Piper nigrum*). As the outer skin is lacking, white pepper is another possibility. The largest peppercorns are 4.5 mm across (Manders 1992, 43).

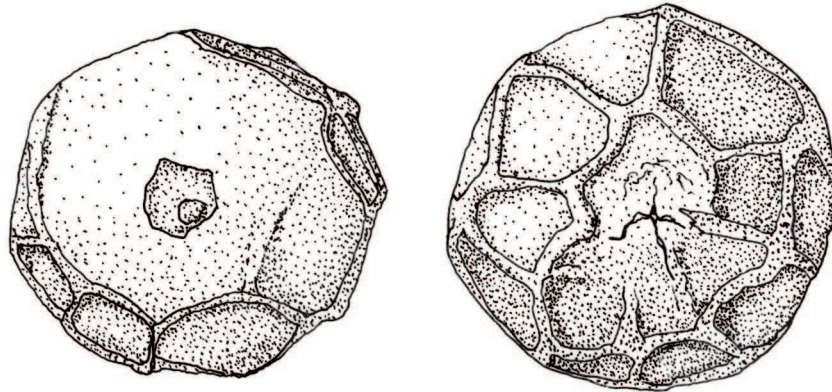


Figure 38 Drawing of two sides of a pepper corn, 4 x 3.8 mm (drawing: M. Manders (RCE)).

Impressions of cereal remains, in particular wheat grains (*Triticum aestivum*), were visible in the iron concretion. Husks of wheat grains were found in between the hides (Manders 1992, 43-44). In addition, two seeds of corn cockle (*Agrostemma githago*), a crop weed that is notorious for being poisonous, were found among the seeds.

The presence of pepper, an expensive spice, could indicate a shipment for trade. However, the combination with cereal remains in almost negligible quantities could also mean that pepper and wheat were taken on board for consumption, and only ended up with the cargo as a result of the wrecking process.

### 3.10 Brass pins

From 1985 to 1999, a total of 719 pins were found in excavation. Their length varies from 2.4 to 7.8 cm, their diameter from 0.4 to 1.2 mm and their heads from 1 to 3 mm (n=179). Several groups can be distinguished: small pins of 2.4-2.7 cm, pins of 3.4 to 3.9 cm, pins of 4.0-4.5 cm, pins with a length of 5.4-6.0 cm, pins with a length of 6.8-7.2 cm and large pins of 7.5-7.8 cm (Chart 6, fig. 39). Interestingly, four types of pins are mentioned in a deed from 1590 (van Dillen 1929, nr. 789).

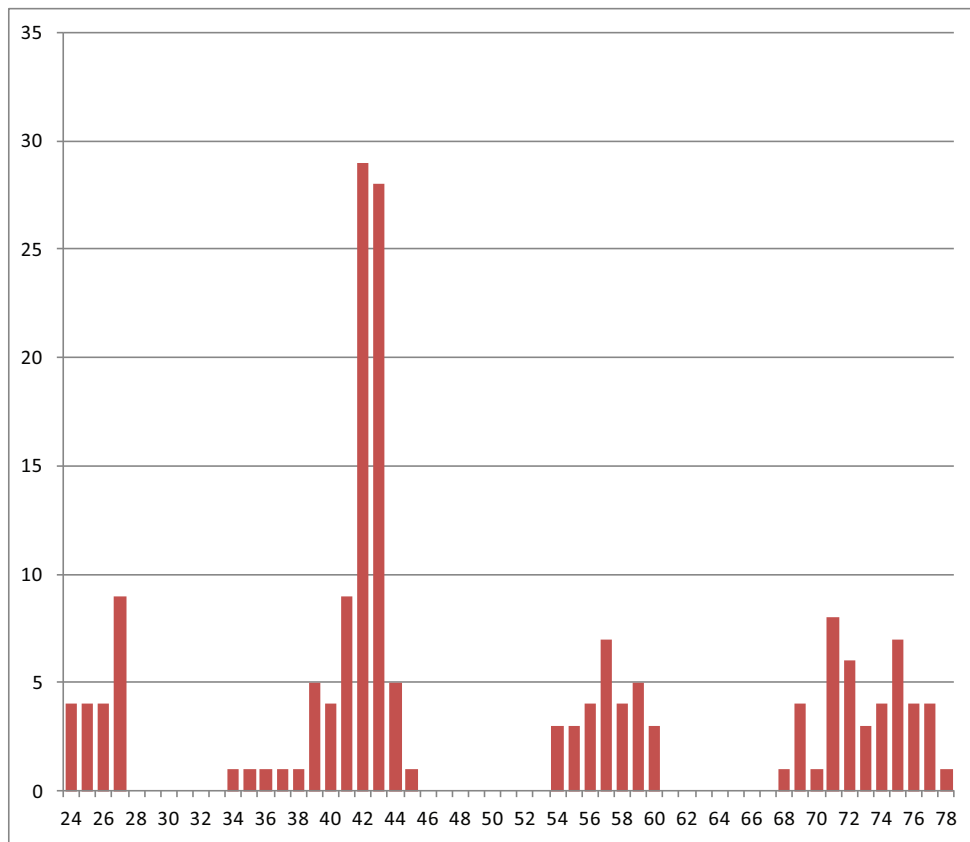


Chart 6 Length distribution of the pins.



Figure 39 Pins (AM-1993-2) of four different lengths (photo: T. Penders RCE).

The pins were discovered throughout the excavated area in the southeast. Of the 490 pins found there, 11.4% came from section A, 35.3% from section B, 8.4% from section C, 20.2% from section E, 9.0% from section F and 7.4% from section J. A concentration of finds occurs in the south and east corners of the frame. However, pins are light and may easily have been moved around with moving sediment or by airlift, so a definite stacking location for the brass pins cannot be derived from this spread.

The pins are made of drawn brass wire. At one end the pins have a sharpened point; at the other a twisted pinhead is attached. The pinpoints are quite sharp; sometimes one side of the pin is sharpened over a longer surface than the other side. The pinhead mostly consists of two coils, usually twisted to the right, and occasionally to the left (fig. 40). Some pins have a thickened upper end instead of a twisted pinhead, but nevertheless seem to be complete (Raymakers 1996, 20).

Pins with a twisted head were manufactured from the beginning of the 16th to the first half of the 19th century. The Low Countries were an important exporter and during the first half of the 16th century most of the pins used in England were imported from there (Harsman 2010, 48). Amsterdam, Bremen and Gloucester were the centres of 17th-century pin-making (van Dillen 1929, nr. 789). In 16th and 17th-century Amsterdam, pin-making was typically a domestic industry, in which all family members were involved. In the second half of the 17th century, the *Nieuwe Werk* quarter (later called *de Jordaan*) had seven pin-makers' alleys (Oldewelt 1946, 158-160; Baart 1977, 135). In later centuries, there was a trend towards the establishments of workshops (Baart 1977, 133).

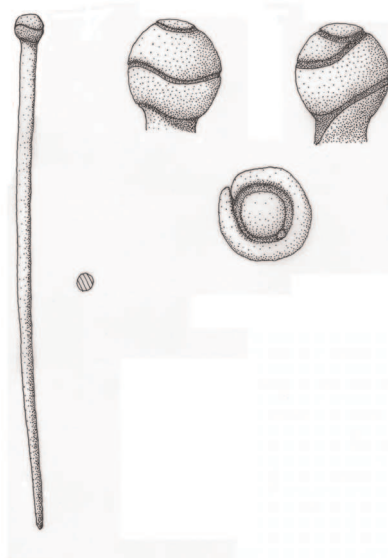


Figure 40 Detailed drawing of a pinhead (drawing: M. Manders (RCE)).

A pin may be a simple artefact, but the process of pin-manufacturing was an elaborate one. First, the brass wire was cleaned and then drawn into the thickness required, cut to length and sharpened. Another (finer) wire was twisted to form the head. The heads were attached to the shanks by being struck with a heavy ram. The pins were then cleaned or yellowed, tin plated, polished and stuck into papers before being offered for sale (Philips 1821, 299-301).

From the 15th to the 18th century, pins were a luxury and expensive (Raymakers 1996, 27). In the 18th century, production processes changed. Pins were made in factories and became less expensive, but their appearance remained exactly the same. Adam Smith uses pin-making in his famous *Wealth of Nations* to show how productivity rises through division of labour, and describes the process in detail. To make one pin, eighteen actions had to be performed, which



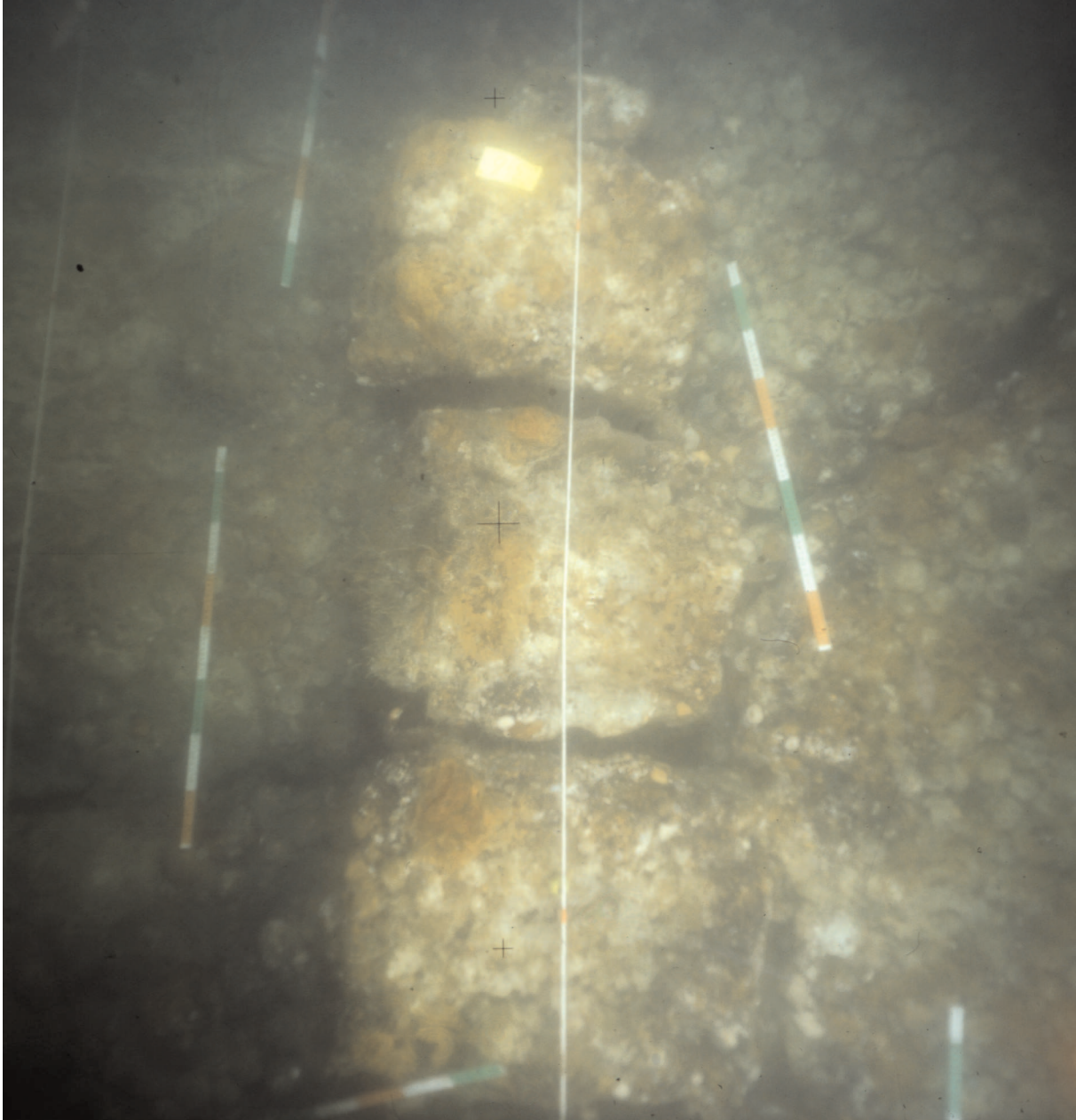


Figure 41 Vertical view of some of the rectangular concretions of cannon balls that reflect the wooden cases in which these have been packed (photo: P. Stassen (RCE)).

were done by ten people. One person performing these steps alone could make 20 pins a day. The ten people together could make 48,000 pins a day (Smith 1776, 5).<sup>8</sup>

Pins were used in handwork and needlework, for making clothes and hats, and for fastening clothes. In early modern times, sleeves and bodices were pinned to the rest of the clothes. According to Van Deijk it is unlikely that the pins were used for the textile shipment. We must therefore assume that they were packed separately. Paper packages as described in literature are likely to have been packed in larger packages, but we have no archaeological evidence as to how, and they barely contribute to the overall weight of the cargo. The trade in pins is documented in other ship finds such as *BZN 2* in the Texel Roads (built 1662-1665, wrecked around 1670), where pins, rolls of brass thread and lead cloth seals were found (Vos 2012). A later example is the *Amsterdam* that ran aground near Hastings in 1749 (Gawronski 1986, 46).

### 3.11 Cannon balls in cases

Cast-iron cannon balls have been found in great numbers. Approximately amidships these cannon balls are cemented to the top of the iron bars. Originally, they were packed in wooden boxes of sizes varying from 62 x 45 to 80 x 53 cm and a height of 30 to 40 cm. The wood has decayed, but the iron shot has concreted in a box-shape. Two rows of four to five boxes are discernible (fig. 41), but the distribution of stray cannon balls suggests that the whole area between 11.50 and 16.75 (3.5 x 6.75 m) was packed with 40 boxes at least. Depending on calibre, each box would weigh 400 kg or more, a shipment of at least 16 ton.

Only seventeen of these cannon balls have been recovered from the wreck. The calibres vary from 37.9 to 96.0 mm. The sample is interpreted as including four one-pounders, five two-pounders, one three-pounder, one four-pounder, four five-pounders and one seven-pounder (van der Linden *forthcoming*). This shot is assumed to be cargo; the calibre is too small for the cannon discovered at the wreck site.

### 3.12 Other cases

No recognisable cargo has been found northwest of the rows of boxes with cannon balls, but rectangular impressions in the wrought-iron imply that cargo in, for example, crates had been stacked there. Cases with quicksilver bottles could be among them.

### 3.13 Nails in barrels

The remains of five barrels have been found, solidly concreted and with indistinct contents. One of these was recovered in 1992. The cask has a height of 67 cm, a minimum diameter of 41 cm at top and bottom and a maximum diameter of 51 cm in the middle. The weight of the object is 302 kg. Staves, hoops, barrel lid and bottom are decayed, but the grain of the wood is still visible in the iron concretion. The cask was X-rayed and proved to be filled to the brim with square wrought-iron nails in a jumble (Stassen 1997).<sup>9</sup> Since entering the conservation lab, the block of nails has been used as a training and testing object for iron conservation and restoration. Many nails have been chipped off. All nails are straight, complete and unused. They vary considerably in length (6.3 to 13.7 cm, n=30) and cross-section (rectangular, 4 to 7 mm), but are clearly not scrap (fig. 42). Consequently, they are either cargo or spare parts (Blok *forthcoming*). If the other five barrels also contain nails, which is likely if we are dealing with cargo, the shipment would account for at least 1.5 tons. The lifted barrel does not seem to have been the largest.

The 18th-century Dutch East India Company (VOC) is known to have ordered nails of various sizes from the forges in Liège. The nails were delivered in baskets and repacked into casks. The repacking was done in a careful radial pattern (Gawronski 1996, 281-282), very different from what we see here. Other wrecks in the Texel Roads, for instance *Texelstroom IV* (Kleij 1992a), have produced barrels of nails that were packed in the same jumble.



Figure 42 Nails from barrel AM-106.1.2, of various lengths (photo: K. Blok (RCE)).

## 4 Discussion: interpretation, historical context and meaning

### 4.1 Date of cargo and shipwreck

Apart from the later intrusions, the assemblage should be regarded as a closed find, contemporaneous to the day that the ship went down. Despite the dynamic environment which caused the remains to be found uncovered or encapsulated in loosely shifting sands, there is strong unity and a strong correlation between the finds in the articulated wreck mound and those that were found in excavation. There is very little in the way of contamination and later intrusions. Parts of the cargo include dating clues, and other parts are dated accordingly.

The stamps on the lead from the Olkusz region include numbers, but cannot be linked to a date. The lavish presence of the marks of hooks or lifting thongs could indicate prolonged circulation, including repeated handling and warehousing as opposed to rapid delivery, but there is no benchmark for the number of actions involved in handling and transportation. For the iron bars and their industrial production, the date of other materials must be conclusive. Indications are more direct regarding the tin from the Erzgebirge. Many of the stamps have dates. They range from 1556 to 1630 and are related to the establishment of the mining venture and of quality patents under the patronage of the Habsburg Bohemian kings and Holy Roman emperors Ferdinand I and Rudolf II. The tin rolls were repacked in barrels at an intermediate stage and an extended period of warehousing and circulation before packing and use cannot be ruled out. Their final shipping was not before 1630, however.

The leather is dated by means of the other categories. It is unlikely to have been in circulation very long. Dated in the same way are its production according to various cultural traditions in dispersed small-scale tanneries and its lumping in bales of uniform composition of nevertheless



varying quality – processes that were probably directed by a middleman. This also applies to the shipment of mercury in square bottles, to the brass wire pins with twisted heads, the ivory, pepper, shot and miscellaneous cargo. The armament and inventory are poorly conclusive, although the cast-iron cannon are assumed to be typical of the 1630s. The only two categories that add to the dating are the ship itself and the textiles as attested by the lead cloth seals.

A sample of the keel has a total of 148 rings, with no sapwood rings present. Dendrochronologically, the rings are dated to the years AD 1465 to 1612, with the best fit on the Westphalia curve (GL=67.3;  $t=7.43$ ;  $p=>99.9\%$ ; Jansma & Spoor 1991). The tree was certainly felled after AD 1612. The absence of sapwood does imply, however, that an unknown number of missing rings must be added. In response to a tendency to make low estimates, Jansma (1995) developed rules of thumb for correction, and in applying these Jansma & Spoor (1991) posit that the tree was felled after AD  $1632 \pm 6$ . The correction rules are not written in stone, however, and although a felling date late in the first half of the 17th century would be consistent with the analysis, a felling date in the 1620s is equally plausible. Dendrochronology, dendrochronological provenancing and its application in ship research have continued to develop over the last 20 years (Daly 2007; Nayling 2008), and it is regrettable that only one sample was taken.

The lead cloth seals are deemed highly relevant to dating the wreck. For one thing, the only and recurring date is the Leiden production date of 1635 (fig. 43). For another, the detailed studies of the industries in Hondschoote (Coornaert 1930) and Leiden (Posthumus 1939) show that both centres increased capacity during this period to meet immediate demand. It is improbable that the expensive high-quality sayes were stored in the production centres for any substantial period of time.

In conclusion, we assume that the ship was built in the 1620s or early 1630s. It was laden in 1635 at the earliest, or quite shortly afterwards. A date for the wreck between 1635 and 1640 is the most plausible.

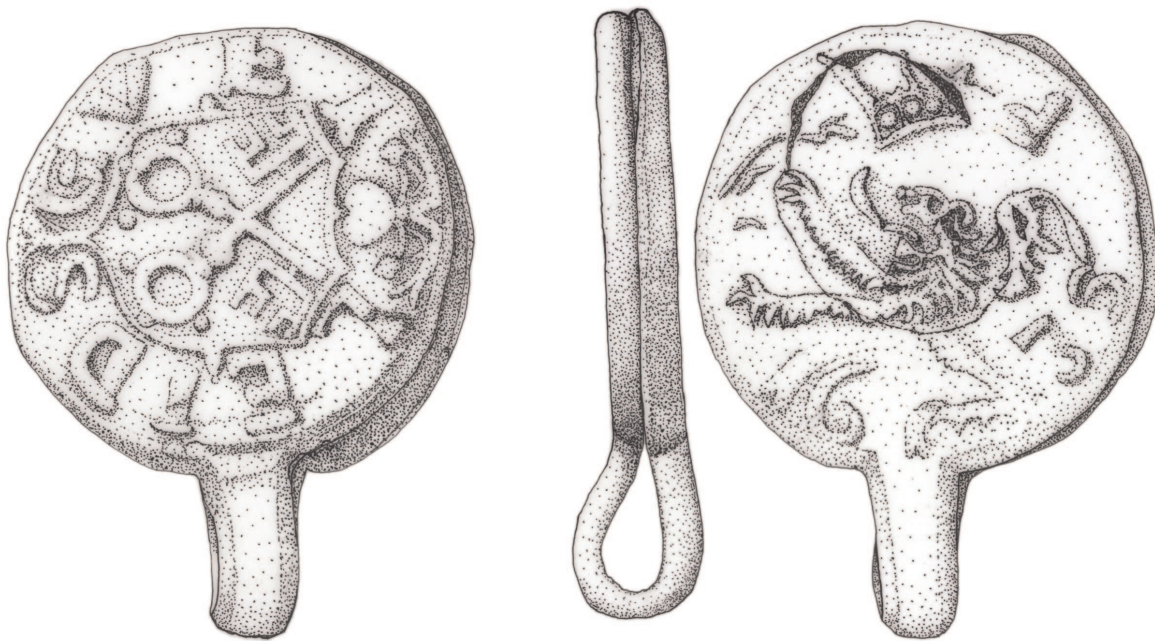


Figure 43 Drawing of a lead cloth seal from Leiden with the year 1635 at the reverse (drawing: M. Manders (RCE)).

#### 4.2 *Provenance*

The provenance of the ship is indicated by the provenance of the keel. Westphalia (and northern Germany in general) was one of the regular timber sources for shipbuilding in the northern Dutch Republic (Maarleveld et al. 1994; Lemée 2006, 218, 256). The few observations on the hull itself are consistent with Dutch construction. When we convert the cargo's encountered weight (550 to 600 tons) to 17th-century *lasten* of around 1975 kg (Hoving 1994, 40), it is 280 to 303 *last*. Although the relationship between length, beam and carrying capacity is problematic, it would fit a Dutch ship with a length of 37 m and a beam of 9 m (Hoving 1994, Tabel I). Witsen (1671, 100) gives a tableer for ships of 130 feet<sup>10</sup> (36.79 m) and a width of 34 ft. (9.62 m), in which the keel length is 95 ft (26.88 m), which is the minimum keel length fitting the *Aanloop Molengat* remains. For their keel he prescribes two or three pieces of sound wood from Wesel on the border of Westphalia, 21 inches (53 cm) square in the middle, tapering to 15 inches (38 cm) in depth at the end. Narrower ships would be longer for the same capacity. The scantlings of the keel would equally be 21 inches (Witsen 1671, 72).

All in all there is good reason to assume that the ship was built in Holland. Nevertheless, construction in the northern German coastal area, which is underrepresented in the archaeological record (Maarleveld 1992; Stanek 2011), cannot be ruled out, even though a ship of 280 *last* at the very least is awkwardly large for the harbours on the Ems, Weser or Elbe.

#### 4.3 *Political context*

The production year of the Leiden cloth, 1635, saw pertinent changes in European political relations. The economy in the Dutch Republic was booming, but the Eighty Years' War with Spain was far from over. Peace-oriented and military factions competed for control (Israel 1995). In central Europe the multifaceted troubles and military campaigns that had raged since the Bohemian rebellion of 1618 and that are commonly denoted as the Thirty Years' War entered a new phase as alliances were restructured in the aftermath of the battle of Nördlingen (6 September 1634), where imperial troops gained the upper hand over Swedish and Protestant forces. The Peace of Prague, concluded in May 1635, brought temporary stability between the Catholic Habsburg Empire and Saxony, one of the leading Protestant states in Germany. It isolated Sweden and benefited Imperial and Spanish troops. France renewed its treaty with Sweden, campaigned in Italy, intensified its intervention on the central European scene and formally entered the war (Pagès 1972). Moreover, France and the Dutch Republic agreed to wage simultaneous military campaigns in order to rid the southern Netherlands of Spanish rule. In May 1635, France declared war on Spain (Israel 1995). The treaty that the States-General and the French political leader Richelieu agreed in February 1635 saw to the partition of Flanders and the other southern provinces along predetermined lines, which has been the object of much contention in the historiography of the Netherlands.

It is thus in a climate of war, shifting alliances and troubled international politics that the *Aanloop Molengat* cargo was laden and lost. The military and political balance of power would keep the wars raging and intensifying on land and at sea for more than another decade until the Peace of Westphalia was concluded in Münster in 1648. It is almost inconceivable that the assemblage postdates that event.

#### 4.4 *Location, economic context, route and destination*

The location in the approaches of the *Molengat* channel into the Texel roads means that the ship was outward or inward bound. It is unlikely that it was just passing. The heavy iron cargo was

probably sourced from Sweden or from Nuremberg through Hamburg. The lead is assumed to have come through the Baltic port of Danzig, the tin through Hamburg. Mercury, iron nails and cannonballs have various provenances, but like ivory, pepper, leather and brass pins, they may well have been sourced through the markets centring on Amsterdam. This is true for the heavy metals as well. For the luxury cloth, it is certain that it was an export product of the Low Countries and it is very unlikely to have been brought back into the country. We must therefore assume that we are dealing with a Dutch vessel, sailing from the Republic with a cargo loaded there, but where to and for what purpose?

Despite the uncertain international relations, the 1630s and 1640s were a period of continued economic growth and integration. In the Dutch Republic, shipping, shipbuilding, manufacture, industrial production and trade, the sectors that the *Aanloop Molengat* assemblage informs us about, continued to grow in unprecedented fashion (de Vries & van der Woude 1995). The Holland staple traded in almost any goods and commodities in every possible direction. Ships of more than 300 *last*, laden with valuable and heavy cargo, are no exception, but they were generally confined to specific routes – the East and West Indies and the Mediterranean (Table 1).

Trade	Number of ships	Average cargo capacity	
		in tons	in <i>lasten</i>
Baltic	400	200-500	100-250
Norway	350	200	100
Northern Russia	50	240	120
Northern Germany	150	40	20
Dover, London and coal trade	100	80	40
Other trades to England and Scotland	50	60	30
Northwestern France	140	80	40
Calais	10	40	20
Southwestern France	300	200	100
Spain, Portugal and Mediterranean	200	200-800	100-400
West India Company	40	200-1000	100-500
East India Company	16	200-1200	100-600

Table 1 Estimated size of the Dutch merchant fleet in 1636. Calculations made as part of a proposal to levy taxes on lackage in 1636 (Bruijn 1977, 200). Some figures amended and added by E.M. Jacobs based on recent research results. Cargo capacities for the Baltic follow findings in the *Notarieel Archief Amsterdam*. Figures for the Mediterranean are based on an edict of the States General in 1623 (Bruijn 1977, 237). Information on the West India Company from Daalder 2005, 94-95; on the East India Company from Gaastra & Emmer 1977, 264 and Van Beylen 1977, 44, including the size of the *Prins Willem* of 1649 (600 *last*).

Contingencies relating to the international situation had both a negative and positive impact on trade, but also prompted deviations from established trading patterns. Incidental price advantages and the need to ballast ships did lead to counterintuitive movements of goods. Heavy cargoes were suitable ballast, even if they did not fetch a higher price at destination than at departure. Outgoing voyages 'in ballast' were standard practice in the East and West India Companies, but also on routes to the Baltic. The Sound toll register for the year 1635 and onwards list many Dutch vessels travelling 'east' with heavy cargo. Among the 71 sailings in 1646 there are two whose cargoes closely resemble *Aanloop Molengat* in that they combined ivory, steel, mercury, tin, nails and pins (Bang & Korst 1906-1933). The skippers are listed as coming from Terschelling and Vlieland and it is likely that the entries represent a coordinated shipment. After all, it was good practice for merchants to spread risks by dividing their shipments over several vessels. Most certainly, however, it indicates that such commodities were transported along this route. Would the *Aanloop Molengat* cargo be similarly destined? It is not impossible. On the other hand, Baltic traders generally clustered at around 100-150 *last*. Ships



of 250 *last* would still engage in this trade, but a ship of more than 300 *last* is hardly conceivable. The size of our vessel makes it unlikely that it was outward bound on this route.

Another possibility is that it was an East Indiaman, which certainly could have matched the dimensions. Most of the cargo that was found could be taken to Asia, and the absence of a single company stamp on any of the find material would be remarkable, but not conclusive. The VOC was a very bureaucratic organisation, however, with detailed administration of what was required and what was lost. The only outgoing vessel that was lost in the area in the relevant time bracket is the *Rob* or *Zeerobbe* that wrecked in a storm when ready to leave Texel on January 5, 1640 (Bruijn et al. 1979). Interestingly, the wealth of archaeological sites in the Texel roads proffers other candidates for this identification. A very large contemporaneous wreck on the *Burgzand*, BZN 3, has provisionally been presented as such, although the find assemblage and archival research did not provide definite proof (van den Akker 2007, 16; Vos 2012).

All in all, it is more probable that the ship was a *straatvaarder* engaged in trade through the straits of Gibraltar. These ships were well-armed and of considerable size. They engaged in a tramping trade and while sailing 'west' would not necessarily directly load a cargo destined for a Mediterranean port. If commercially attractive, they would stop in France, Spain or Portugal, enemy territory or not.

A secondary source, the *Chronyk van de Stad Medenblik*, published by Dirk Burger van Schoorel in 1710, informs us of a southwesterly gale that wrecked dozens of ships off Texel during the moonless night of November 3, 1638 (Buisman 2000, 448). The account is consistent with Gotfridus' chronicle of 1660 (Gottschalk 1977, 133). Two of the ships were from Hoorn; they were returning from Brazil with sugar and were 200 and 250 *last* respectively. A third ship that is explicitly mentioned is a *straatvaarder* from Enkhuizen. No other details are given, but the total loss, apparently comprising another 32 (smaller?) vessels, was valued at the substantial sum of 10 tons of gold. It is quite possible that it included the material discovered at *Aanloop Molengat*. A systematic study of local archives and newspaper reports on post-medieval ship losses may shed more light on this in the future (cf. Hell & Gijsbers 2012).

#### 4.5 *Significance and further avenues of research*

The *Aanloop Molengat* discovery and project perfectly illustrate the diversity of heritage significance at different levels and in different contexts. Significance is not a static fact. There are many contingencies that determine whether it is created at all (Maarleveld 2010). In the exploration of new environments, such as the North Sea bottom, or new types of archaeological sites, such as early modern ships, significance and its development are highly dependent on popular images of what an explorer is meant to explore (Eelman 1986; Maarleveld 2007; Holtorf 2007). But there are intrinsic factors as well. They need to be recognised early on, preferably by the discoverers, but can develop only through research.

The significance of the individual find categories lies in what they contribute to the quantitative and technological study of production processes in the early modern world. Half-finished and intermediate products stand out, as these are not normally available for study. The assemblage as a whole represents an accidental cross-section of industries, each with their own structure and scale. The sectors range from the culturally diverse rural livestock processing and primary tanning, to the urban domestic industry of pin-making, large government-controlled mining operations, early modern steel production and the modernised urban cloth industry. At the micro-level, material studies of these tangible shipments help to unravel what has been called the *chaîne opératoire* both technologically and in terms of social organisation (Lemonnier 2002). For some of the materials presented, such as the iron bars, this approach can be further elaborated.

The combined cargo, its packing and composition contribute to our understanding of distribution and routes, the organisation of intermediate trade, stocking, warehousing and stapling. It is obvious that only a selection of related questions is addressed here. Analysis of the plethora of merchant marks on ingots and the body of lead cloth seals that are tentatively attributed to merchant houses is just one aspect that calls for further scrutiny.

In its intricate detail the material approach of the archaeological *Aanloop Molengat* project is a relevant complement to the analyses of socioeconomic historians such as Posthumus, Coornaert and others in the Annales School, and the synthesising work of De Vries & Van der Woude (1995) on the economic development of the Dutch Republic. It is equally obvious that such detailed work informs the conceptualisation at the macro-level of narratives on social change, on the development of the modern world and on any competitive technological edge on the part of the West (Vries 1995; Pomeranz 2000; Palumbo-Liu 2011). A condition for this significance is the accessibility of the source material in the context of its assessment and analysis, which is what the present overview of primary data and underlying analyses is attempting to achieve.

If we apply the Annales School's classical division of time, the significance of the *Aanloop Molengat* assemblage as presented above is mostly at the *longue durée* pace of time of very slowly changing structures and the *cyclical* pace of the upswinging economy. This also applies to the study of ship structure. Despite rudimentary plans to cut out and lift a section, the ship itself did not become a priority in the *Aanloop Molengat* project. Nevertheless, construction is discussed at some length, as it complements ongoing discourses in ship-archaeological research.

At the more contingent level of *histoire événementielle*, significance could lie in the direct identification of shipment by an individual merchant, presently concealed behind one of the many individual merchant marks and cloth seal tags. It can also lie in the development of an explanation for the wrecked cargo as such. Although somewhat remote from the general strength of archaeological information, it could for instance be interesting to pursue and test the hypothesis that the heavy cargo in this large ship was destined for France, or more specifically, for its armies. Richelieu faced constant problems of supply and it is not inconceivable that overtly or not, his accord with the Dutch Republic's governors, who were all in one way or other closely connected with maritime trade, would have included the supply of iron, lead, leather, cloth and ammunition, adorned with some ivory and purple cloth .... It is an aspect that could well have been neglected in both Dutch and French historiography.

The significance of the *Aanloop Molengat* project for the development of underwater archaeology is another aspect altogether. Methodological choices and pioneering have widened the scope of fieldwork experience in the Netherlands and beyond, thanks to broad international involvement. Technical possibilities and impossibilities, strengths and weaknesses of mixed teams, successes and failures in photo documentation were all part of this. The pivotal role of the discovery of the site and subsequent decisions in setting the course for the legal protection of underwater cultural heritage is a certainty that adds to its significance in terms of the history of the discipline.

## Acknowledgments

This study was only possible through the dedication of many. The project for which the NWO grant was used involved around 35 people in some capacity or other, many of them employed at the National Service for Cultural Heritage Agency or the Museum of Texel, others as students or external advisors. For this latter group, we would like to specifically thank Hans Lenstra and Ekkehard Westermann, as their names will probably not appear in the documentation. Through the years many others, employed by or associated with the maritime predecessors of

the National Service, have contributed to the project, and the work of researchers in the Netherlands, central Europe and the UK has been essential. Most of their names will occur in the references or in the documents supporting this article. We wish to extend our heartfelt thanks to them. The names and contributions of the 102 people who took part in the excavation are acknowledged under fieldwork. Our thanks to them are extended to the management and crews of Rijkswaterstaat, who got the project started through sonar surveys and by putting the steel frame and cardinal buoy in position and who were always ready to help (e.g. with lifting). However, we would like to dedicate this study to those team members and friends who are no longer with us. They are Herman Dekker, Jef van den Akker and Arie van der Vis, the skipper of *Phileas Fogg* who spent more days on site than anybody else, as well as Philippe Nowacki-Breczenski, Joost Mioulet and Lillian Ray who died far too early in their careers contributing to maritime archaeology.

Thijs Maarleveld  
University of Southern Denmark, Esbjerg, Denmark  
t.maarleveld@sdu.dk

Alice B.M. Overmeer  
Rijksdienst voor het Cultureel Erfgoed (Cultural Heritage Agency), dept. Lelystad  
alice@scheepsarcheoloog.nl

## Notes

1. The remains of stationary fishing, both professional and recreational, were a constant nuisance. In July 1990 a mess of geotextiles or bigbag packing material was encountered. Although uncorroborated, there is reason to believe that this was related to an incident in which the site and its buoyed shot lines were used as a temporary repository for a shipment of drugs. A transport in an inflatable dinghy was intercepted by the border police and the use of temporary dumps was referred to in police investigation. The packing material had already been disposed of when this information reached the team. No damage had been done to the site.
2. Images of individual objects in the assemblage are accessible through the *Beeldbank Cultureel Erfgoed* (<http://beeldbank.cultureelerfgoed.nl/alle-afbeeldingen/weergave/search/layout/result/indeling/gallery/start/60?searchfield=molengat> accessed 30 August 2012).
3. The combination of the Maltese cross of the Teutonic order, the Polish (?) eagle and the spelling of Ilkus was first brought to our attention in 1992 by Dr Andrzej Zbierski, director of the National Maritime Museum in Gdansk. Edgar Wróblewski helped us to locate and understand Polish (and Czech) references and historical analyses.
4. For this estimate the pack is divided into a main body and a fragment that is known to lie on top of lead ingots. The average dimensions of the main fragment are 17.0 by 6.88 by 0.60 m. The volume (70.125 m<sup>3</sup>) times the density (7860 kg/m<sup>3</sup>) gives a weight of 551182.5 kg. Together with the weight of the small fragment (3.35 x 2.15 x 0.30 m = 2.16 m<sup>3</sup>, times the density = 16938.495 kg), the total weight of wrought-iron bars is 568165.995 kg (568 tons).
5. The mandate of Ferdinand I (1503–1564, King of Bohemia from 1526), issued on 12 April 1551 is kept in the Ferdinandeum of Tyrol Landesmuseum (Inv. no. FB6196). We are grateful to Ekkehard Westermann for helping us trace this information. The region marks in the present collections are generally variants of the marks in this mandate, but later marks, referring to Rudolf II (1552–1612, King of Bohemia from 1575) also occur.
6. RA Leiden (NL), Archive 501A, inv. no. 187(B), f 223r. The year mark 'in de Leeuw stellen' ('to be placed on the Lion').
7. Sténuít refers to these objects as 'pewter' caps, as is customary in archaeological literature. His observation that lead content must be high supports the idea that the *Lastdrager* caps are lead as well.
8. 'One man draws out the wire, another straightens it, a third cuts it, a fourth points it, a fifth grinds it at the top for receiving the head; to make the head requires two or three distinct operations; to put it on, is a peculiar business, to whiten the pins is another; it is even a trade by itself to put them into the paper; and the important business of making a pin is, in this manner, divided into about eighteen



- distinct operations, which, in some manufactories, are all performed by distinct hands, though in others the same man will sometimes perform two or three of them' (Smith 1776, 5).
9. The X-ray research was conducted by the Rotterdamse Droogdok Maatschappij (RDM) in Rotterdam, with a SL69 MkIII linear accelerator for industrial radiography (MEL).
  10. Amsterdam *voet* = 0.283 m; Amsterdam *duim* = 0.0257 m (Verhoeff 1983).

## References

- Adams, J. 1986, Excavation strategies and techniques. In: J.H.G. Gawronski (ed.), *Annual report of the VOC-ship 'Amsterdam' foundation 1985*, Amsterdam.
- Agricola, G. 1556, *De Re Metallica (Vom Berg- und Hüttenwesen)*, Basel.
- Anon. 1592, *Nopens de tinne*, 1592 - Gemeente Archief Leiden, Gildearchief Nr. 1129.
- Auer, J. & A. Firth 2007, The 'Gresham Ship': an interim report on a 16th-century wreck from Princes Channel, Thames Estuary, *Post-Medieval Archaeology* 41/2, 222-241.
- Azier, I.J.J. 2007, *Inventaris van het 'Biddinghuizer Colfschip' OM11*, MA thesis Groningen.
- Baart, J.M. et al. 1977, *Opgravingen in Amsterdam, 20 jaar stadskernonderzoek*, Amsterdam.
- Baart, J.M. 1988, Archeologische kroniek van Holland over 1987, Amsterdam: Centrum. In: P.J. Woltering (ed.), *Holland* 20.6, 297-300.
- Bang, N.H.W. & K. Korst (eds) 1906-1933, *Tabeller over skibsfart og varetransport gennem Øresund, 1497-1660: unarbejdede efter de bevarede regnskaber over Øresundtolden*, Copenhagen.
- Bartoš, V. 1994, Výrobní značky cínových hutí horního Krušnohoří ze 16. a 17. století, *Historický Sborník Karlovarska II*, 110-125. (Production marks of tin smelters in the Upper Ore Mountains in the 16th and 17th Centuries).
- Bass, G.F. 1968, New tools for undersea archaeology, *National Geographic* 134/3, 402-423.
- Birch, Th. 2010, The Gresham Shipwreck: an investigation into the iron bars - research so far. *The European Archaeologist* 32, 8-9.
- Birch, T. & M. Martínón-Torres *forthcoming* [2012], The iron bars from the 'Gresham Ship': employing multivariate statistics to further slag inclusion analysis of ferrous objects. In: J. Bayley, E., Blakelock, E. & D. Crossley (eds), *Proceedings of the 2009 HMS conference held at Bradford* (HMS Occasional Publication).
- Blok, K. *forthcoming* [2012], *Verpakking en stuwage van de lading van een 17e eeuwse koopvaarder 'Aanloop Molengat'*, MA thesis Groningen.
- Botma, H.C. & Th.J. Maarleveld 1987, Underwater heightmeter: A new handheld precision instrument for elevation measuring in underwater surveying, *International Journal of Nautical Archaeology* 16.2, 87-94.
- Bracker, J. 1986, Ein Wrackfund aus der Elbe bei Wittenbergen. In: H. Stoob (ed.), *See- und Flusshäfen vom Hochmittelalter bis zur Industrialisierung*, Köln.
- Brinkkemper, O. & C. Joosten 2012, *The identification of plant fibres from shipwreck Aanloop Molengat*, Amsterdam/Amersfoort (internal report RCE).
- Bruijn, J.R. 1977, De vaart in Europa. In: L.M. Akveld, S. Hart & W.J. van Hoboken (eds), *Maritieme geschiedenis der Nederlanden, deel 2, Zeventiende eeuw, van 1585 tot. ca 1680*, Bussum, 200-241.
- Bruijn, J.R., F.S. Gaastra & I. Schöffer 1979, *Dutch Asiatic shipping in the 17th and 18th centuries, Volume II, Outward-bound voyages from the Netherlands to Asia and the Cape (1595-1794)*, The Hague.
- Buisman, J. 2000, *Duizend jaar weer, wind en water in de Lage Landen, deel 4: 1575-1675*, Franeker.
- Carver, M. 2011, *Making archaeology happen: design versus dogma*, Walnut Creek.
- Chirikure, S., A. Sinamai, E. Goagoses, M. Mubusisi & W. Ndoro 2010, Maritime archaeology and trans-oceanic trade: A case study of the Oranjemund Shipwreck cargo, Namibia, *Journal of Maritime Archaeology* 5.1, 37-55.
- Coornaert, E. 1930, *La draperie-sayerterie d'Hondschoote (XIVe-XVIIIe siècles). Un centre industriel d'autrefois*, Paris.
- Clayton, R.E., N.H. Gale & Z.A. Stos-Gale 2002, Isotope fingerprinting of ancient tin: preliminary studies. In: *Archaeometry* 98. *Proceedings of the 31st Symposium Budapest, April 26-May 3 1998* (BAR International Series 1043 (II), 301-309).
- Daalder, R., E. van Eyck van Heslinga, J. Th. Lindblad, P. Rogaar & P. Schonewille (eds) 1998, *Goud uit Graan, Nederland en het Oostzeegebied 1600-1850*, Amsterdam.
- Daalder, R. 2005, West-Indiëvaarder. In: R. Daalder & E.S. Spits (eds), *Schepen van de Gouden Eeuw. Jaarboek Nederlands Scheepvaartmuseum Amsterdam 2005*. Amsterdam/Zutphen, 91-98.

- Daly, A. 2007, *Timber, trade and tree-rings. A dendrochronological analysis of structural oak timber in Northern Europe, c. AD 1000 to c. AD 1650*, PhD thesis Esbjerg.
- Deyon, P. 1972, La concurrence internationale des manufactures lainières aux XVIe et XVIIe siècles, *Annales Économies, Sociétés, Civilisations*, 27.1, 20-32.
- Dillmann, P. & M. L'Heritier 2007, Slag inclusion analyses for studying ferrous alloys employed in French medieval buildings: supply of materials and diffusion of smelting processes, *Journal of Archaeological Science* 34, 1810-1823.
- Dubbe, B. 1978, *Tin en tinnegieters in Nederland*, Lochem.
- Eelman, C.J. 1986, Zoeken en vinden, in: *Verantwoord onder water. Koninklijke Nederlandse Oudheidkundige Bond-congres 1985*, Amsterdam/Zutphen, 3-7.
- Förster, Th. 1994, *Methodik der Prospektion und Dokumentation von Unterwasserfundstellen am Beispiel von sechs Wrackstellen des 16. bis 20. Jahrhunderts vor Rügen und Hiddensee*, Leipzig.
- Frost, H. 1962, Submarine archaeology and Mediterranean wreck formations, *Mariner's Mirror* 48, 82-89.
- Gaastra, F.S. & P.C. Emmer 1977, De vaart buiten Europa. In: L.M. Akveld, S. Hart & W.J. van Hoboken (eds), *Maritieme Geschiedenis der Nederlanden, deel 2, Zeventiende eeuw, van 1585 tot. ca 1680*, Bussum, 242-288.
- Gawronski, J.H.G. (ed.) 1986, *Annual report of the VOC-ship 'Amsterdam' foundation 1985*, Amsterdam.
- Gawronski, J.H.G. 1996, *De equipage van de Hollandia en de Amsterdam: bedrijvigheid van de VOC in 18de-eeuws Amsterdam*, Amsterdam.
- Gianfrotta, P.A. & P. Pomey 1980, *Archeologia subacquea, Storia, tecniche, scoperte e relitti*, Milaan.
- Gottschalk, M.K.E. 1977, *Stormvloed en rivieroverstromingen in Nederland. Storm surges and floods in the Netherlands*, Assen/Amsterdam.
- Green, J.N. 1977, Further notes on the mercury trade. Appendix III. In: J.N. Green (ed.), *The loss of the Verenigde Oostindische Compagnie Jacht "Vergulde Draeck", Western Australia 1656 : A historical background and excavation report with an appendix on similar loss of the fluit "Lastdrager"*, Oxford, 403-468.
- Green, J. & Gainsford, M. 2003, Evaluation of underwater surveying techniques, *International Journal of Nautical Archaeology* 32.2, 252-61.
- Haller von Hallerstein, H. Frhr. 1975, Nürnberger Unternehmer im Bergbau und Zinnhandel zu Schlaggenwald im 16. und 17. Jahrhundert. *Scripta Mercaturae* 1975/1, 41-68.
- Harsman, J. 2010, In Praise of pins: from tool to metaphor, *History Workshop Journal* 70, 47-66.
- Hedges, E.S. 1964, *Tin in social and economic history*, Londen.
- Heijer, H. den 1997, *Goud, ivoor en slaven*, Zutphen.
- Hell, M. & W. Gijsbers 2012, Geborgen of gezonken, gered of verdrongen. Papieren getuigen van scheepsrampen rond Texel (1575-1795), *Tijdschrift voor Zeeschiedenis* 31.1, 42-59.
- Henkes, H.E. 1994, *Glas zonder glans: vijf eeuwen gebruiksglas uit de bodem van de Lage Landen, 1300-1800*, Rotterdam (Rotterdam papers 9).
- Herwijnen, W.B. van 1956, *Ledertechnologie*, 's-Hertogenbosch.
- Holtorf, C.J. 2007, *Archaeology is a brand!: the meaning of archaeology in contemporary popular culture*, Oxford.
- Hoover, H. C. & L.H. Hoover 1950, *Georgius Agricola De Re Metallica: translated from the 1st Latin edition of 1556, with biographical introduction, annotations and appendices upon the development of mining methods, metallurgical processes, geology, mineralogy and mining law from the earliest times to the 16th century*, New York (re-edition from: *The Mining Magazine*, Londen, 1912).
- Hoving, A.J. 1994, *Nicolaes Witsens scheeps-bouw-konst open gestelt*, Franeker.
- Hugen, L.C. 1990, *Toepassing van onderwaterfotogrammetrie bij de archeologische kartering van een scheepswrak*, MA thesis Delft.
- Israel, J.I. 1980, The States General and the strategic regulation of the Dutch river trade, 1621-1636, *BMGN Low Countries Historical Review* 95, 461-491.
- Israel, J.I. 1995, *The Dutch Republic. Its rise, greatness, and fall, 1477-1806*, Oxford.
- Jansma, E. 1995, *RememberRINGS: the development and application of local and regional tree-ring chronologies of oak for the purposes of archaeological and historical research in the Netherlands*, Amersfoort (Nederlandse Archeologische Rapporten 1).
- Jansma E. & E. Spoor 1991, *Datering Aanloop Molengat kiel*, Amersfoort (interne rapportage dendrochronologisch laboratorium ROB).
- Joosten, C. & J. Nienhuis 2011, *Slakinsluitels in een smeedijzeren baar uit het 17e eeuwse scheepswrak Aanloop Molengat*, Amsterdam/Amersfoort (internal report RCE).
- Keith, D.H. 1990, The importance of myth, magic and persistence in underwater archaeology. In: T.L. Carrell (ed.), *Underwater proceedings from the society for historical archaeology conference*, 18-20.

- Kellenbenz, H. 1987, Sächsisches und Böhmisches Zinn auf dem Europäischen Markt. In: H. Kellenbenz & H. Pohl (eds), *Historia socialis et oeconomica*, Stuttgart, 235-258.
- Kits Nieuwenkamp, H.W.M.J. 1955, *Het raadsel der huismarken. Proeve van verklaring van huismarken, mees-tertekens, grafmerken, analphabetentekens, koopmansmerken, notaristekens, poortersmerken en vissersmerken*, Amsterdam.
- Kleij, P. 1992a, Texelstroom IV - Herkomst en bestemming van een onbekende koopvaarder. In: Reinders, R. (ed.), *Scheepsuitrustingen en -inventaris. Inleidingen gehouden tijdens het vijfde Glavimans symposium Amsterdam, 5 april 1991*, Groningen, 71-80.
- Kleij, P. 1992b, *Aanloop Molengat. Vondstgroep leer, met een bijdrage over botanisch materiaal van M. Manders*, Alphen aan den Rijn.
- Kuiper, P.P. 2006, *Ijzerhard oer, oerdegelijk ijzer. Het graven van ijzeroer in Zuid-Salland en de noordelijke delen van de Achterhoek in de Nieuwe tijd*, MA thesis Wageningen.
- Laban, C. 1995, *The Pleistocene glaciations in the Dutch sector of the North Sea: a synthesis of sedimentary and seismic data*, MA thesis Amsterdam.
- Lemée, Chr.P.P. 2006, *The Renaissance shipwrecks from Christianshavn. An archaeological and architectural study of large carvel vessels in Danish waters, 1580-1640*, Roskilde (Ships and Boats of the North 6).
- Lemonnier, P. 2002, *Transformation in material culture since the Neolithic*, London.
- Lenstra, H. 2009, DNA-onderzoek vertelt ons de geschiedenis van het rund, *Zeldzaam huisdier: tijdschrift van de Stichting Zeldzame Huisdierrassen* 34. 2, 8-9. <http://www.szh.nl/index.php?id=336,1071,0,0,1,0> (accessed 120212)
- Lundin, E. 1973, Determining the positions of objects located beneath a water surface, *International Journal for Nautical Archaeology* 2.2, 371-8.
- Maarleveld, Th.J. 1984, *Archeologie in troebel water. Een nieuwe werkwijze voor scheepsonderzoek. Twee schepen onderzocht*, Rijswijk.
- Maarleveld, Th.J. 1988, Un plomb de drap de Mons, découvert lors de la fouille d'un navire marchand à la proximité de la côte Hollandaise, *Annales du Cercle Archéologique de Mons* 73, 147-150.
- Maarleveld, Th.J. 1992, Archaeology and early modern merchant ships. Building sequence and consequences. An introductory review. In: A. Carmiggelt (ed.), *Rotterdam Papers VII*, Rotterdam, 155-173.
- Maarleveld, Th.J. 1993, Aanloop Molengat of lading als aanleiding. In: R. Reinders & A. van Holk (eds), *Scheepslading, Inleidingen gehouden tijdens het zesde Glavimans symposium*, Groningen, 32-43.
- Maarleveld, Th.J. 2006, The Netherlands. In: S. Dromgoole (ed.), *The protection of the underwater cultural heritage. National perspectives in light of the UNESCO Convention 2001*, Leiden/Boston, 161-188.
- Maarleveld, Th.J. 2007, *Maritime archaeology. Identifying identity*, Esbjerg (Inaugural address).
- Maarleveld, Th.J. 2010, Fish and "chips of knowledge": some thoughts on the biases of the archaeological record. In: T. Bekker-Nielsen & D. Bernal Casasola (eds), *Ancient nets and fishing gear. Monographs of the Sagena Project 2*, Cádiz/Århus, 256-274.
- Maarleveld, Th.J., B. Goudswaard & R. Oosting 1994, New data on early modern Dutch-flush shipbuilding: Scheurrak T24 and Inschot/Zuidoostrak, *International Journal of Nautical Archaeology* 23.1, 13-25.
- Maarleveld, Th.J. & A.D. Vos 1989, Archaeological mapping, a sub-North Sea experiment, *Geodetical Info Magazine* 3.10, 30-35.
- Manders, M. 1992, Zaden uit 'Aanloop Molengat'. In: P. Kleij, *Aanloop Molengat. Vondstgroep Leer*, Alphen aan den Rijn, 43-47.
- Manders, M.R. 2003, The mysteries of a Baltic trader. In: C. Beltrame (ed.), *Boats, ships and shipyard*, Oxford (Proceedings of the Ninth International Symposium on Boat and Ship Archaeology), 320-329.
- Molenda, D. 1963, Górnictwo Kruszcowe, *Studia i Materiały z Historii Kultury Materialnej VIII*, Wrocław/Warszawa/Kraków.
- Molenda, D. 1972, *Kopalnie rud Ołowiu na Terenie Żłóz Śląsko-Krakowskich w XVI-XVIII Wieku*, Wrocław/Warszawa/Kraków/Gdąnsk.
- Molenda, D. 2001, Polski Ołów na Rynkach Europy Środkowej w XIII-XVII Wieku, *Studia i Materiały z Historii Kultury Materialnej LXIX*, Warszawa.
- Nayling, N. 2008, The application of dendrochronology to underwater archaeology. In: C. Tsang, (ed.), *International Symposium on Underwater Archaeology Taiwan 2008*, Taiwan, 64-73.
- Nientker, J. 2011, *Fragment stof AM-1993-65-5, van textielloodje uit scheepswrak Aanloop Molengat*, Lelystad/Amersfoort (internal report RCE).
- Nørnberg, P. & C. Christensen 1980, The Kyholm corer. A diver-operated sediment corer, *Sedimentary Geology* 25, 1-4.
- Oldewelt, W.F.H. 1946, Ambachten en beroepen in de 17e en 18e eeuw. In: A.E. D'Ailly (ed.), *Zeven eeuwen Amsterdam* 2, 149-160.



- Overmeer, A.B.M. 2012, *Een Zweeds oorlogsschip in Nederlandse wateren. Een waardestellend onderzoek op scheepswrak Sophia Albertina*, Lelystad/Amersfoort (Rapportage Archeologische Monumenten 201).
- Pagès, G. 1972, *La guerre de trente ans, 1618-1648*, Paris.
- Palumbo-Liu, D., B. Robbins & N. Tanoukhi (eds) 2011, *Immanuel Wallerstein and the problem of the world: system, scale, culture*, Durham, NC.
- Peterson, M. 1979, Graveyard of the Quicksilver Galleons, *National Geographic* 156/6, 850-876.
- Phillips, R. (ed.) 182110, *The book of English trades, and library of useful arts*, London.
- Pleiner, R. 2000, Iron in archaeology: the European bloomery smelters, *Archeologicky ustav AVCR*, Prague.
- Pomeranz, K.L. 2000, *The great divergence: China, Europe, and the making of the modern world economy*, Princeton, NJ.
- Posthumus, N.W. (ed.) 1912, *Bronnen tot geschiedenis van de Leidsche textielnijverheid III*, Den Haag (Rijks-geschiedkundige Publicatiën Grote Serie 18). <http://www.historici.nl/retro> (accessed 120212)
- Posthumus, N.W. (ed.) 1914, *Bronnen tot geschiedenis van de Leidsche textielnijverheid IV*, Den Haag (Rijks-geschiedkundige Publicatiën Grote Serie 22). <http://www.historici.nl/retro> (accessed 120212)
- Posthumus, N.W. 1939, *De geschiedenis van de Leidsche lakenindustrie. II De nieuwe tijd*, Den Haag.
- Reinders, R. 1986, Scheepsarcheologie in Nederland. In: *Verantwoord onder water, Koninklijke Nederlandse Oudheidkundige Bond-congres 1985*, Amsterdam/Zutphen, 15-40.
- Reinheckel, G. 2002, *Sächsisches Zinn des 16. und 17. Jahrhunderts*, Dresden.
- Raymakers, R. 1996, *Spelden uit het Aanloop Molengat: een deel verzameling*, MA thesis Leiden.
- Rijkelijhuizen, M. 2009, Whales, walruses, and elephants: artisans in ivory, baleen, and other skeletal materials in seventeenth- and eighteenth-century Amsterdam, *International Journal of Historical Archaeology* 13 (4), 409-429.
- Rijkelijhuizen, M. 2011, Large or small? African elephant tusk sizes and the Dutch ivory trade and craft. In: Baron J. & B. Kufel-Diakowska (eds), *Written in bones. Studies on technological and social contexts of past faunal skeletal remains*, Wrocław, 225-232.
- Sabloff, J.A. 2008, *Archaeology matters : action archaeology in the modern world*, Walnut Creek CA.
- Sanders, D.H. 2011, Virtual reconstruction of maritime sites and artifacts. In: A. Catsambis, B. Ford & D. L. Hamilton (eds), *The Oxford handbook of maritime archaeology*, Oxford/New York, 305-326.
- Sha, L.P. 1990, *Sedimentological studies of the ebb-tidal deltas along the West Frisian Islands, the Netherlands*, Utrecht.
- Smith, A. 1776, *An inquiry into the nature and causes of the wealth of nations*, London.
- Stanek, A. 2011, *The Wittenbergen wreck: an example of flush-planked ship construction in northern Europe*, MA thesis Esbjerg.
- Stassen, P. 1997, *Verslag röntgenonderzoek van AM-106.1.2*, Alphen a/d Rijn (internal report AAO, 05-03-1997).
- Sténuit, R. 1977, The loss of the fluit Lastdrager. In: Green, J.N. (ed.), *The loss of the Verenigde Oostindische Compagnie Jacht "Vergulde Draeck", Western Australia 1656: A historical background and excavation report with an appendix on similar loss of the fluit "Lastdrager"*, Oxford, 403-468.
- Stikker, N. 1988, *Twee pakketten huiden uit het scheepswrak 'Aanloop Molengat'. Documentatie en onderzoek van een deelpakket*, Lelystad (Werkdocument R.IJ.P. 1988-39cbw).
- Stikker, N.G. 1991, Runderhuiden uit zee. In: R. Reinders & R. Oosting (eds), *Scheepsarcheologie: prioriteiten en lopend onderzoek. Inleidingen gehouden tijdens de Glavimans symposia in 1986 en 1988 (Flevobericht 322)*, 133-137.
- Tilley, Chr. 1989, Excavation as theatre, *Antiquity* 63, 275-280.
- Tylecote, R.F. 1992, *A history of metallurgy*, London.
- Van Beylen, J. 1977, Scheepstypen. In: L.M. Akveld, S. Hart & W.J. van Hoboken (eds), *Maritieme geschiedenis der Nederlanden, deel 2, Zeventiende eeuw, van 1585 tot. ca 1680*, Bussum, 11-71.
- Van Bommel, M. & C. Joosten 2012, *Textiel uit scheepswrak Aanloop Molengat*, Amsterdam/Amersfoort (internal report RCE).
- Van den Akker, J., M. Manders, W. van der Wens & A. Zandstra (eds) 2007, *Bundel maritieme vindplaatsen 1. Amersfoort/Steenwijk*.
- Van Deijk, F. 1993, Een ooggetuige van belang? Isaac Claeszoon Swanenburg en zijn weergave van de Leidse saaiproductie, *Textielhistorische bijdragen* 33, 7-42.
- Van der Linden, M. forthcoming [2012], *De projectielen uit scheepswrak Aanloop Molengat*, Deventer, student thesis Saxion Hogeschool, Deventer).
- Van Dillen, J.G. 1929-1974, *Bronnen tot de geschiedenis van het bedrijfsleven en gildewezen van Amsterdam (RGP)*, Den Haag. Van Os, B. 2011, *Kwikhoudend materiaal uit het Molengat wrak*, Amersfoort (internal report RCE).

- Verhoef, J.M. 1983, *De oude Nederlandse maten en gewichten*, Amsterdam.
- Verriest, L. 1942a, *Étude d'histoire économique et sociale. La draperie d'Ath des origines au XVIIIe siècle*, Bruxelles.
- Verriest, L. 1942b, La perte des archives du Hainaut et de Tournai. *Revue belge de philologie et d'histoire* 21/21, 186-193.
- Voormolen, B. 1992, *Project Aanloop Molengat '92, Stageverslag vondstverwerking*, student thesis Leiden.
- Vos, A.D. 1996, Aanloop Molengat. Ein Schiffswrack mit schwerer Ladung westlich von Texel. In: *Degüwa. Deutsche Gesellschaft zur Förderung der Unterwasserarchäologie e.V., Rundbrief* 11, 6. Jahrgang, 22-27.
- Vos, A.D. 2004, Noordzee \* Steile Hoek (maritieme archeologie). In: R. Proos/TGV (eds), *Archeologische kroniek Noord-Holland over 2003, II Zuid-Holland, Holland* 36, 95-98.
- Vos, A.D. 2011, *Archeologische documentatie met behulp van fotogrammetrie, een experiment*, Lelystad (internal report RCE).
- Vos, A.D. 2012, *Onderwaterarcheologie op de Rede van Texel. Waardstellende onderzoeken in de westelijke Waddenzee (Burgzand)*, Lelystad/Amersfoort (Nederlandse Archeologische Rapporten 41).
- Vries, P.H.H. 1995, *Verhaal en betoog: geschiedbeoefening tussen postmoderne vertelling en sociaal-wetenschappelijke analyse*, Leiden.
- Vries, J. de & A. van der Woude 1995, *Nederland 1500-1815: de eerste ronde van moderne economische groei*, Amsterdam.
- Welker, F., W. Gijsbers & B. Gravendeel forthcoming [2012], DNA-analyse van eeuwenoude runderhuiden uit scheepswrak Aanloop Molengat, *Westerheem, tijdschrift voor de Nederlandse archeologie*.
- Willies, L. 1982, *Lead and leadmining*, Aylesbury.
- Witsen, N. 1671, *Aeloude en hedendaegsche scheeps-bouw en bestier*, Amsterdam.