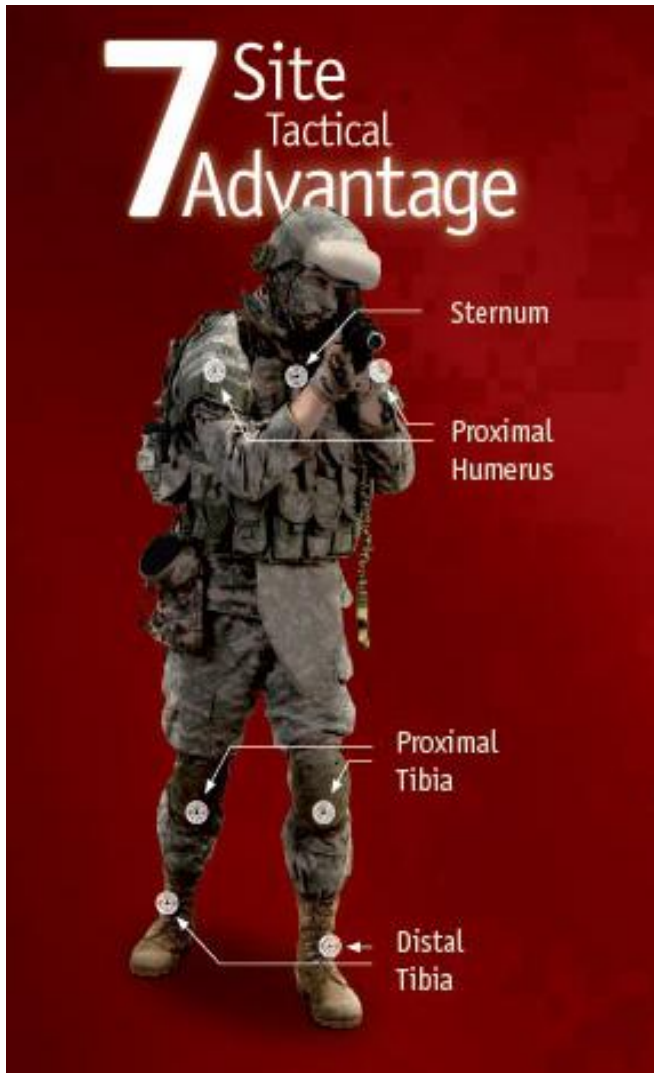


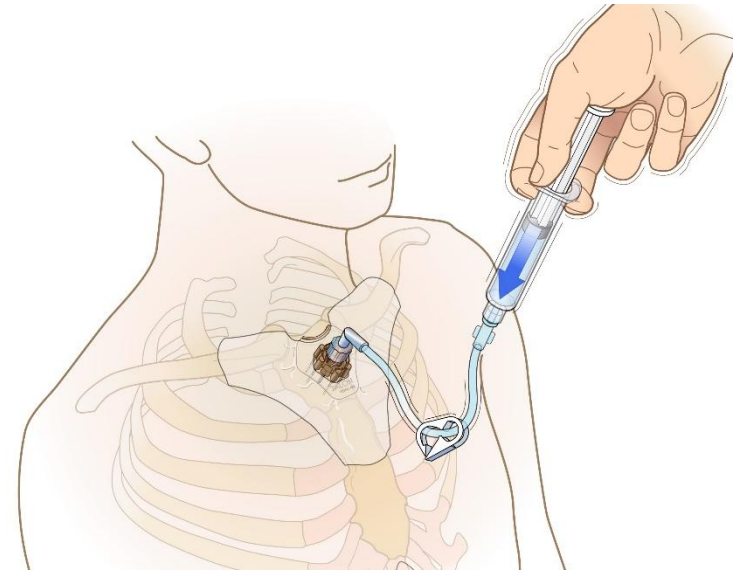
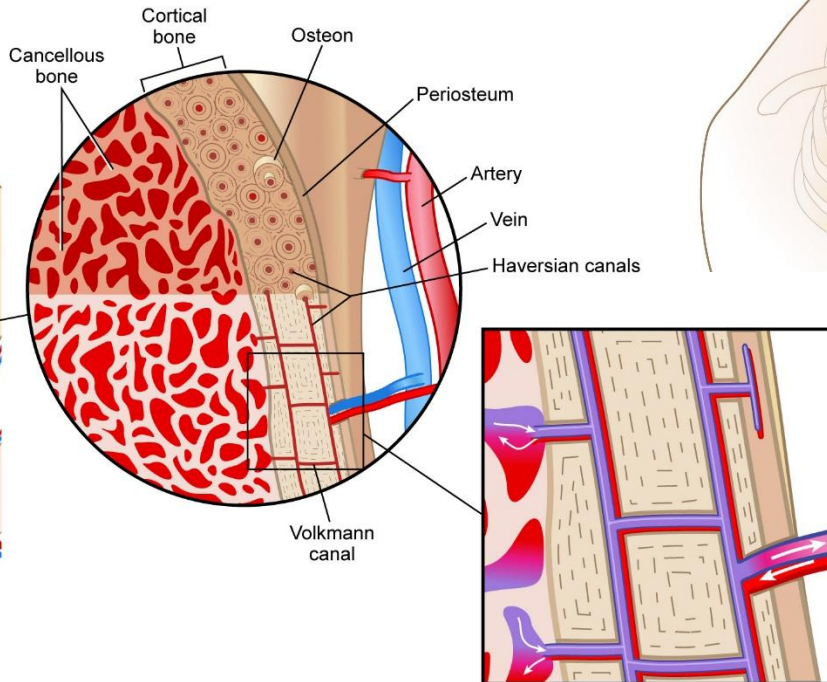
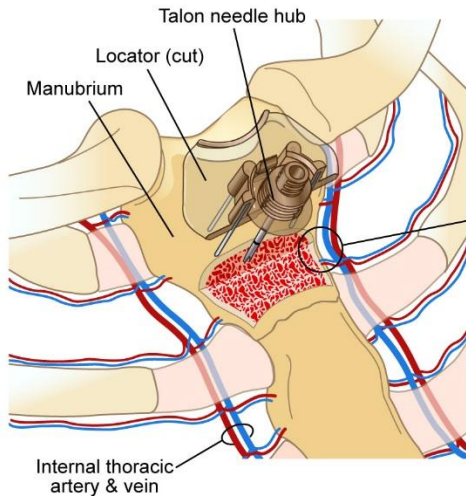


EZ-IO® T.A.L.O.N.™
Tactically Advanced Lifesaving Intraosseous Needle
One Device, Seven Site System

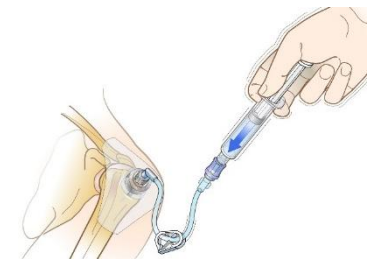


- When rapid fluid or pharmacological resuscitation is required in emergency situations including (but not limited to):
 - Cardiac/Respiratory Arrest
 - Trauma
 - Shock
 - RSI
 - Anaphylaxis
 - Chemical exposure

Highly vascular, non-collapsible access



Rapid flush to
displace marrow



CONTRAINDICATIONS

- Fracture of target bone
- IO or attempted IO in the target bone within the previous 48 hours
- Prosthesis or orthopedic procedure at insertion site
- Infection at area of insertion
- Inability to identify landmarks
- Osteoporosis (sternal application only)

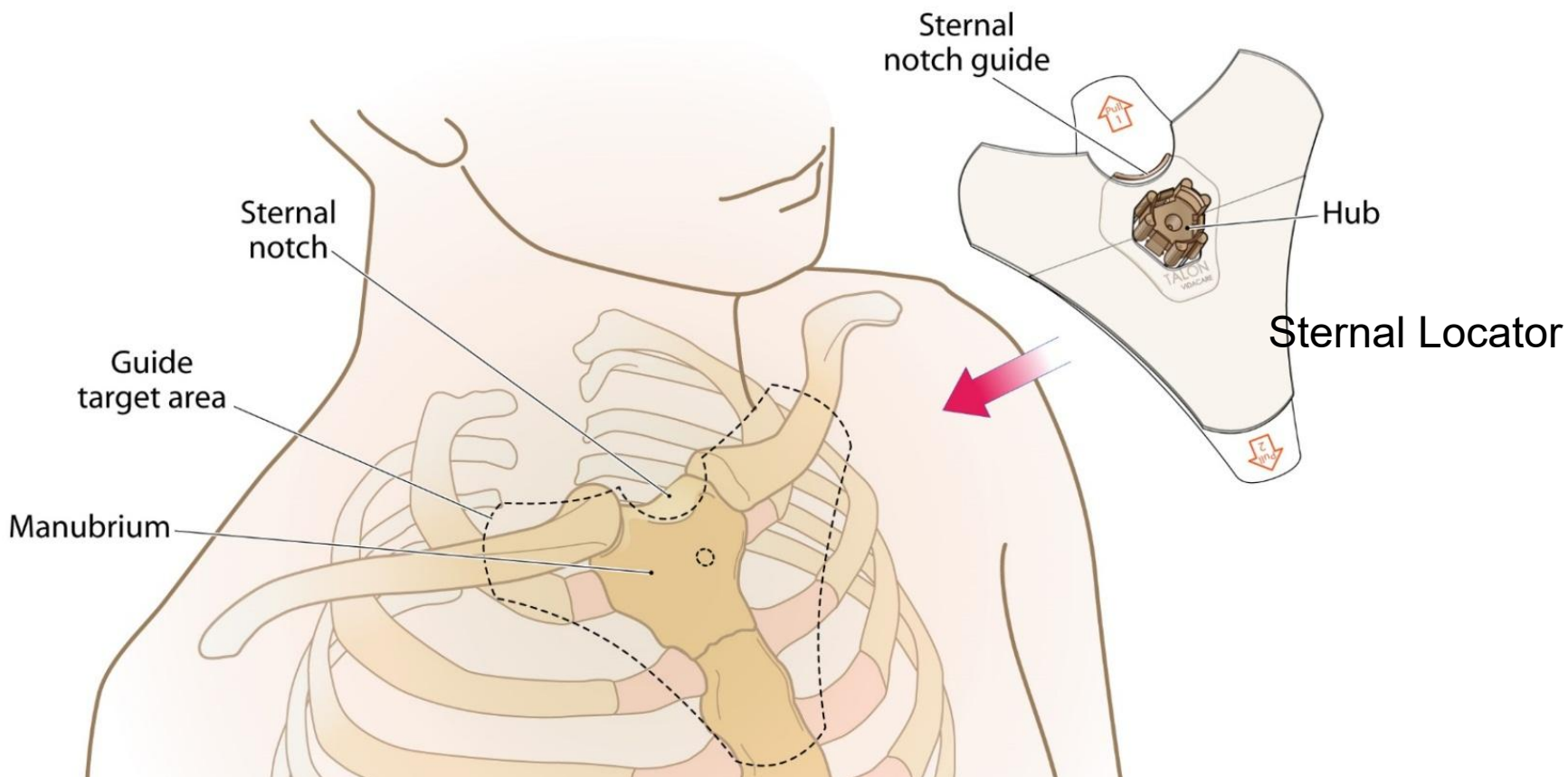
PACKAGE CONTENTS

- Sternal Locator
- 15 gauge 38.5 mm manual IO needle set
- EZ-Connect® Extension Set
- Warning label
- Sharps protector
- Wristband
- Quick Guide Reference Card

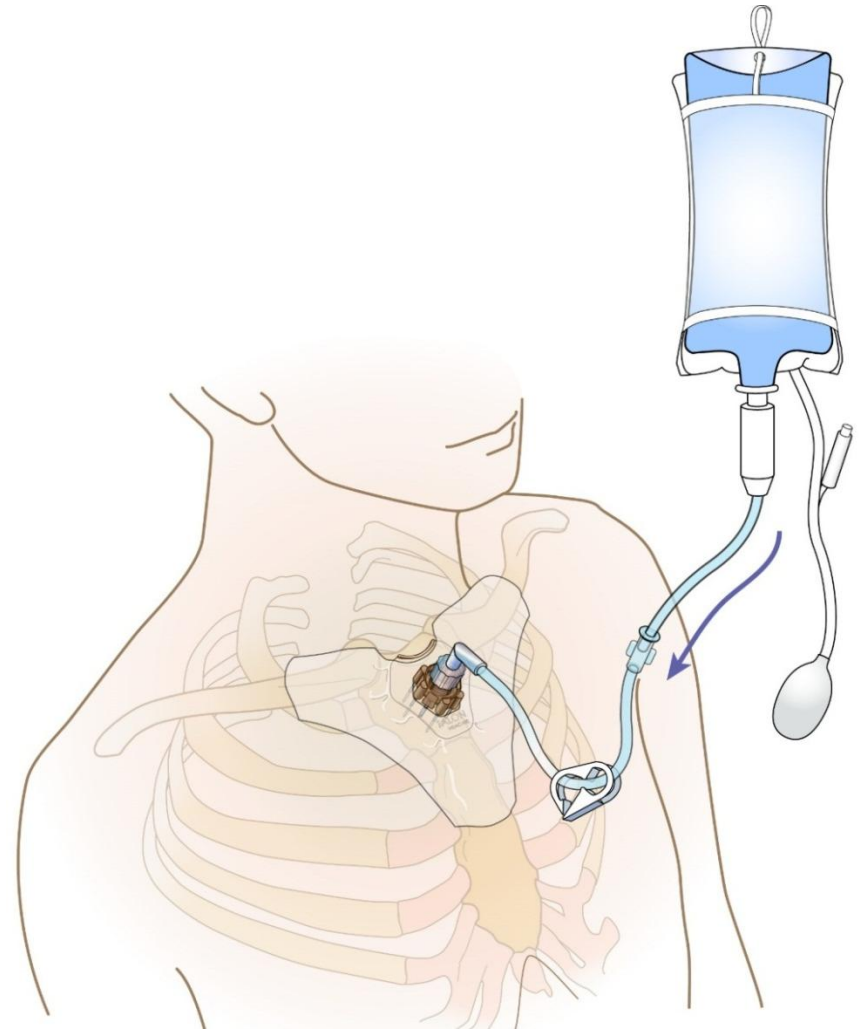
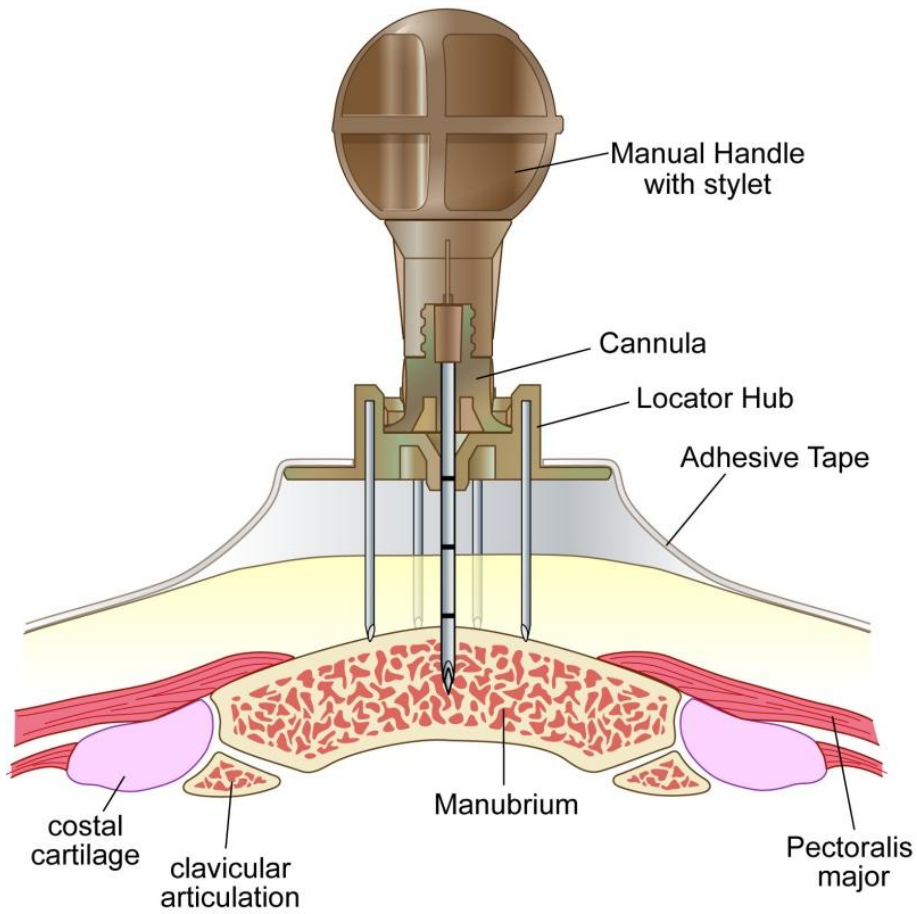


STERNAL SITE IDENTIFICATION

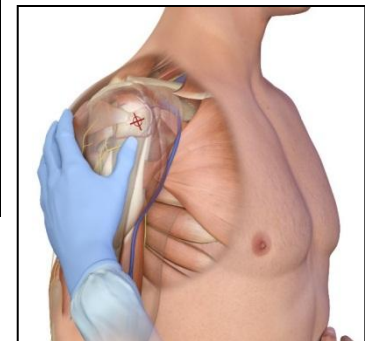
The Sternal Locator *must* be used when inserting the EZ-IO® T.A.L.O.N™ Needle Set into the sternum



STERNAL SITE TECHNIQUE



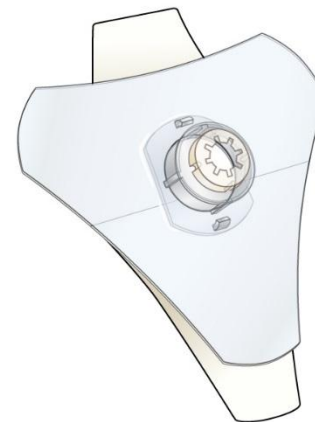
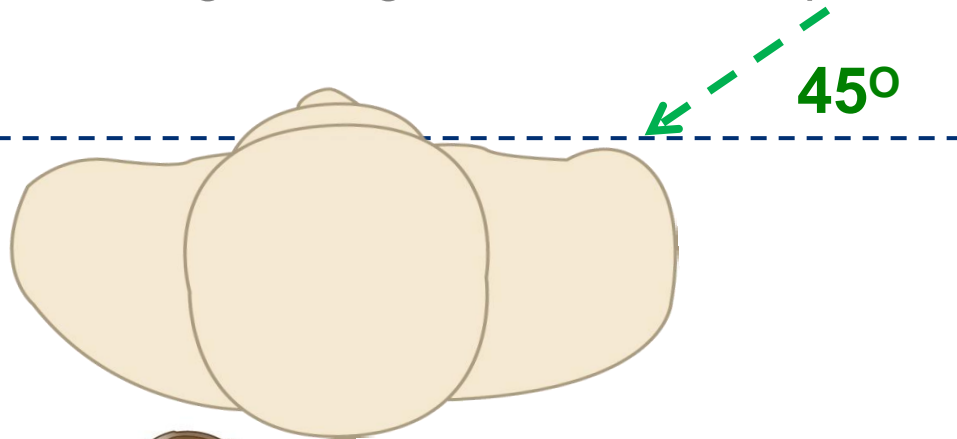
PROXIMAL HUMERUS SITE IDENTIFICATION



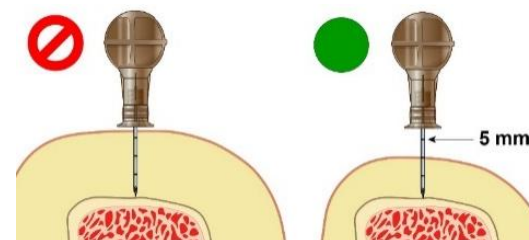
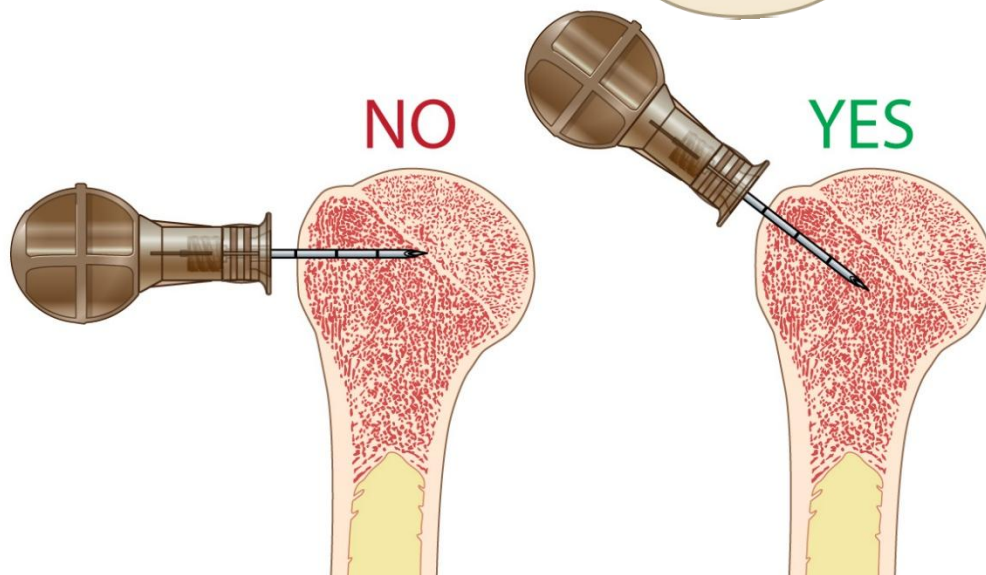
PROXIMAL HUMERUS INSERTION

Aim needle tip at a 45 degree angle to the anterior plane and posteromedial

**Anterior
Plane**

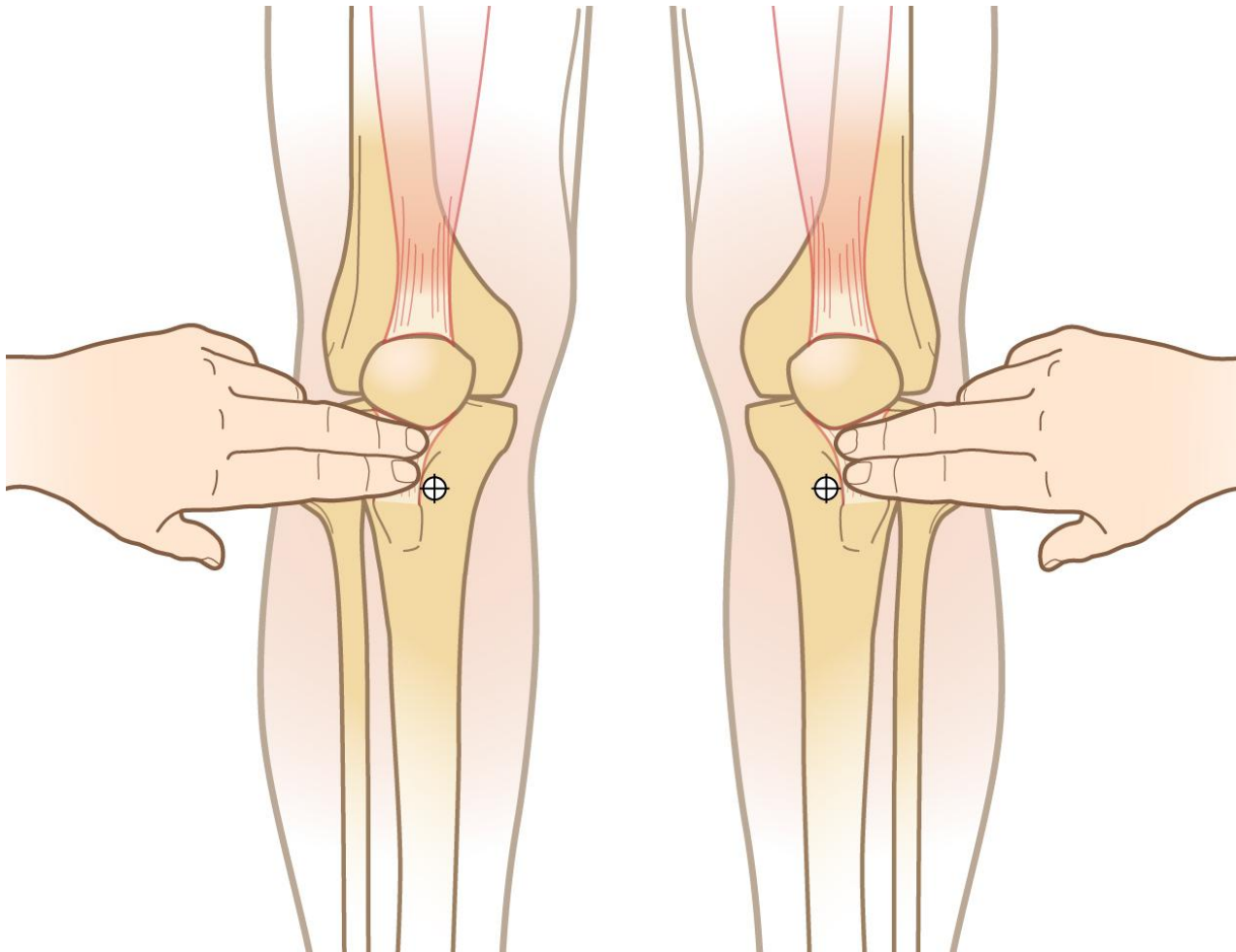


EZ-Stabilizer® Dressing
For Use in Extremities Only



Ensure adequate needle length

PROXIMAL TIBIA SITE IDENTIFICATION (ADULT)

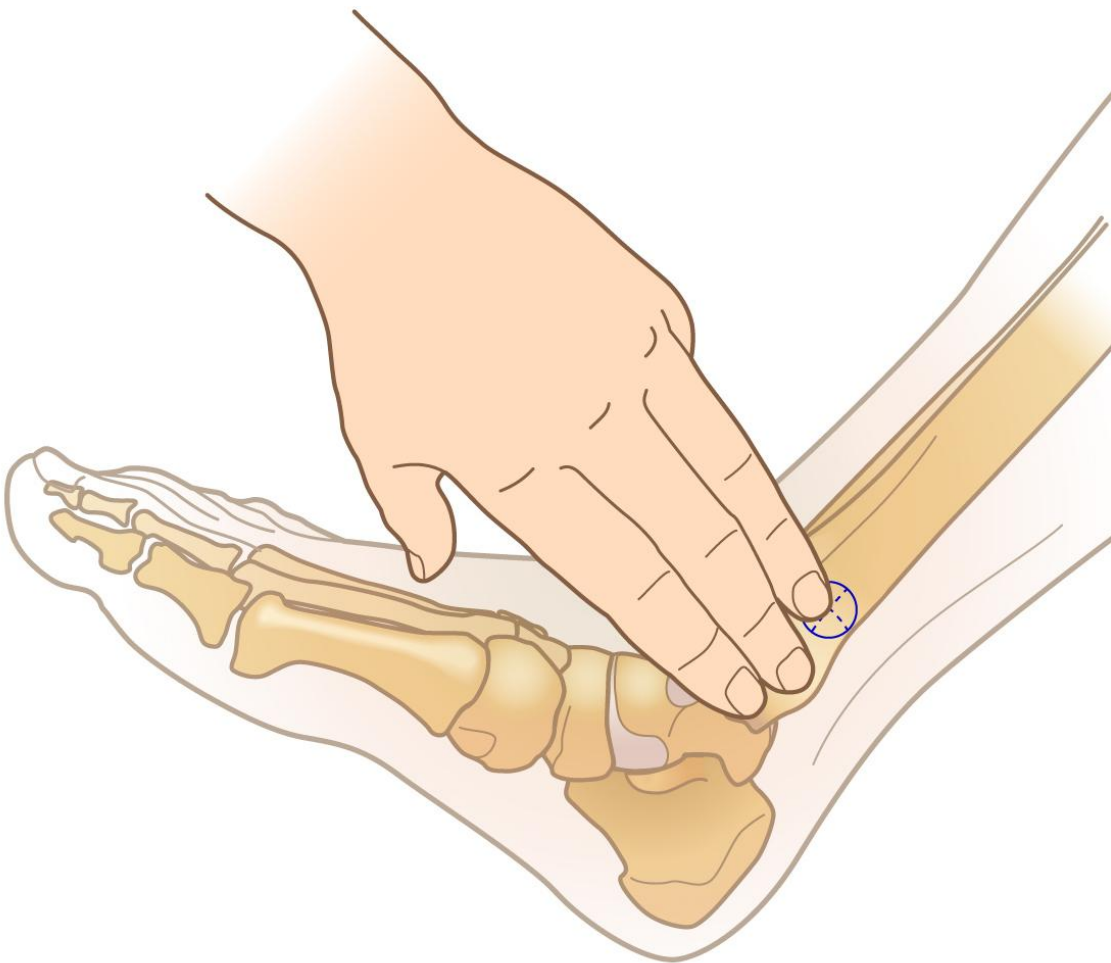


Approximately
3 cm below the
patella and
2 cm medial



EZ-Stabilizer® Dressing
For Use in Extremities Only

DISTAL TIBIA SITE IDENTIFICATION (ADULT)



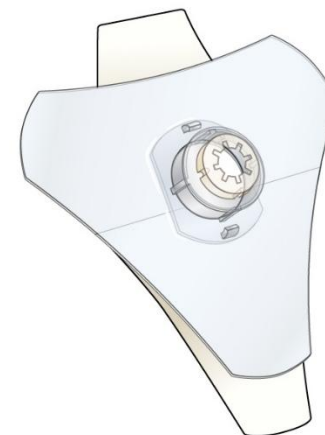
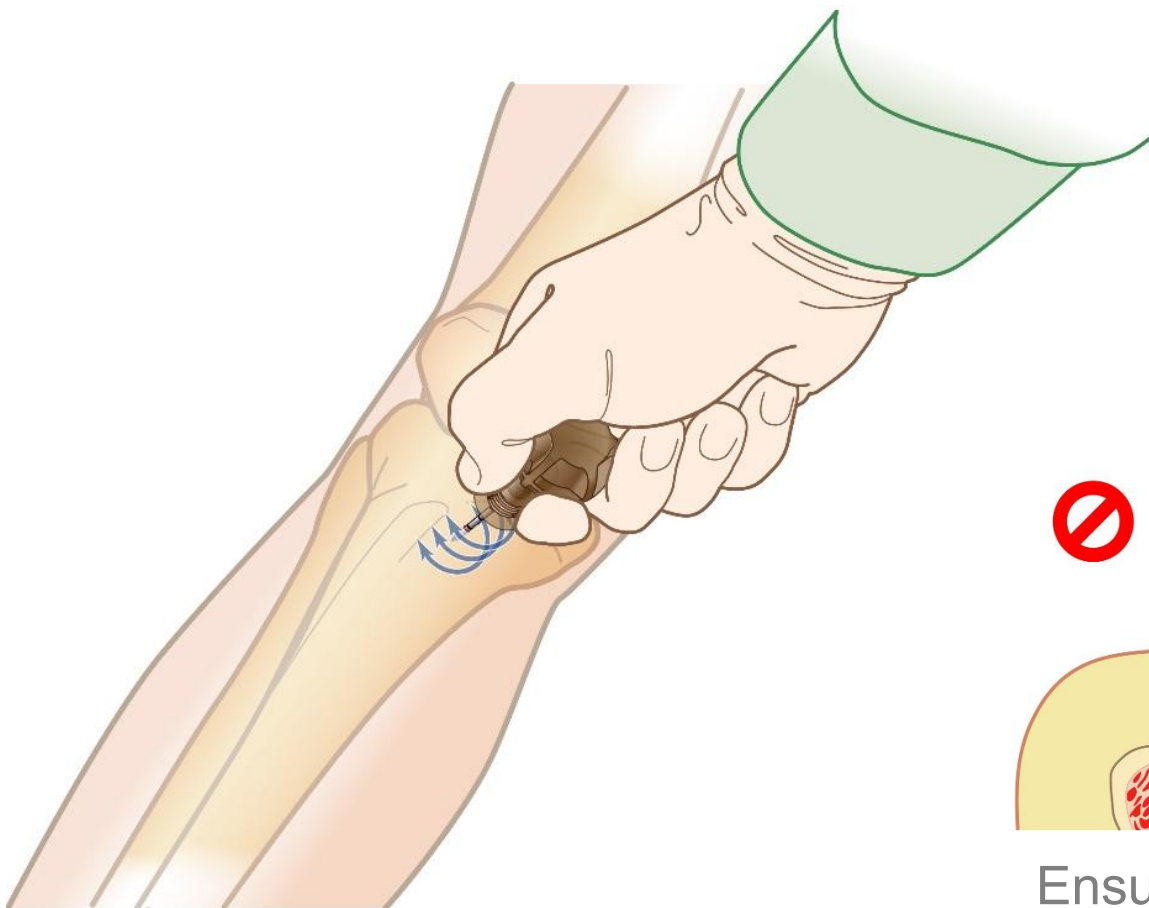
Approximately 3 cm proximal to the most prominent aspect of the medial malleolus, on the flat center aspect of the bone



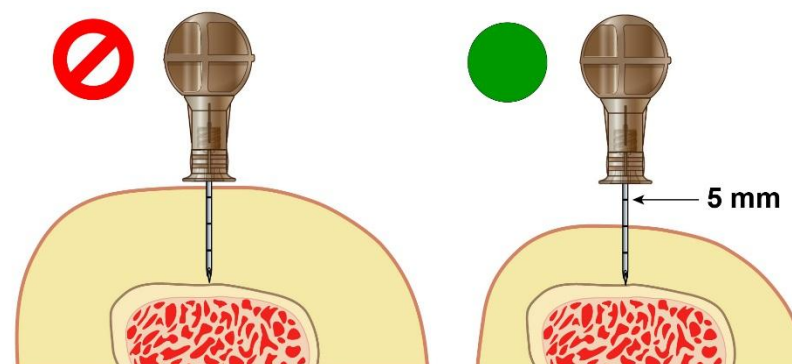
EZ-Stabilizer® Dressing
For Use in Extremities Only

TIBIA INSERTION TECHNIQUE

Insert needle at a 90 degree angle to the bone

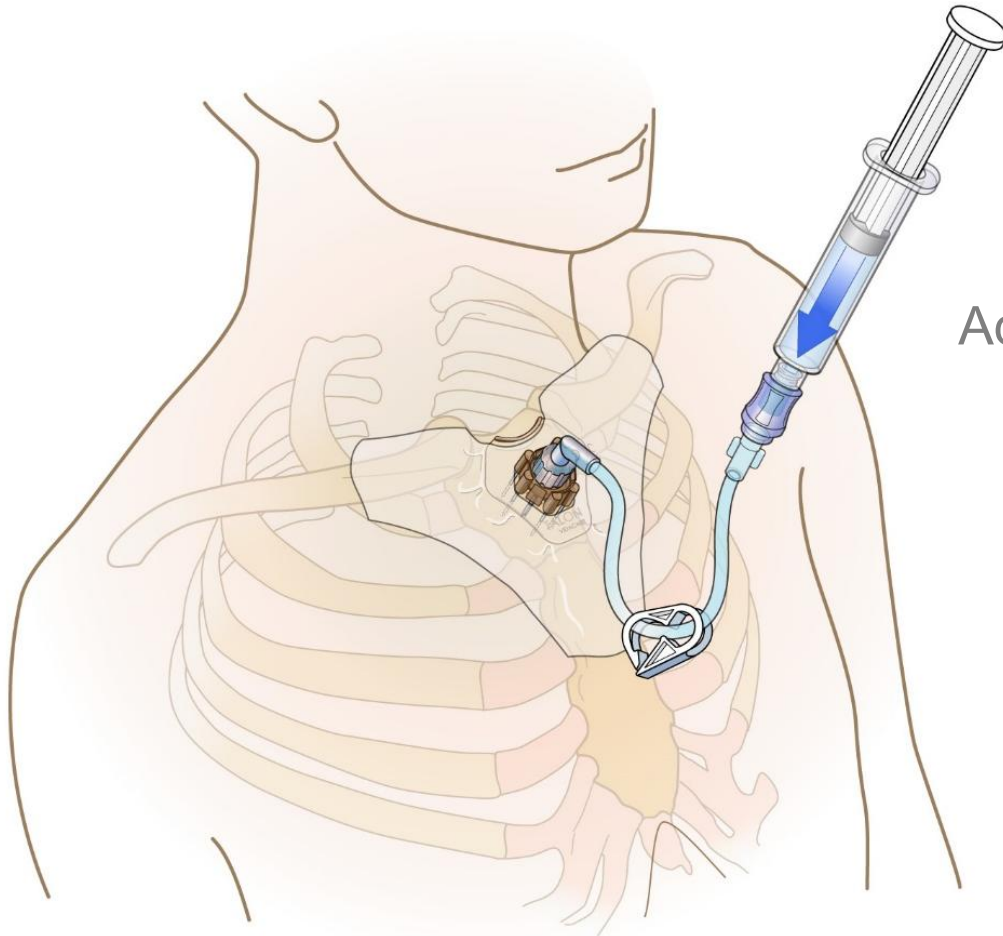


EZ-Stabilizer® Dressing
For Use in Extremities Only

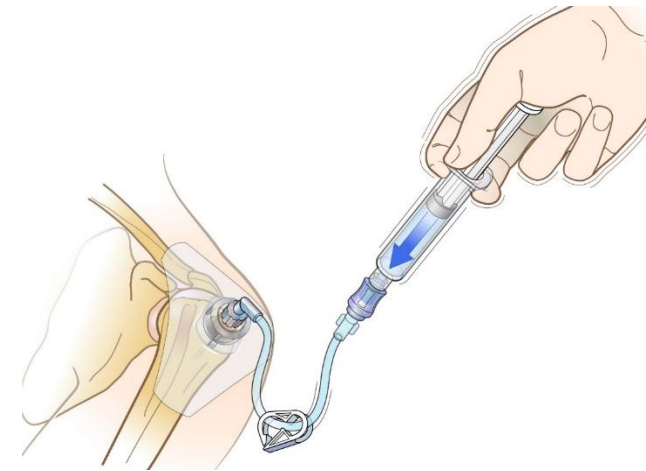


Ensure adequate needle length

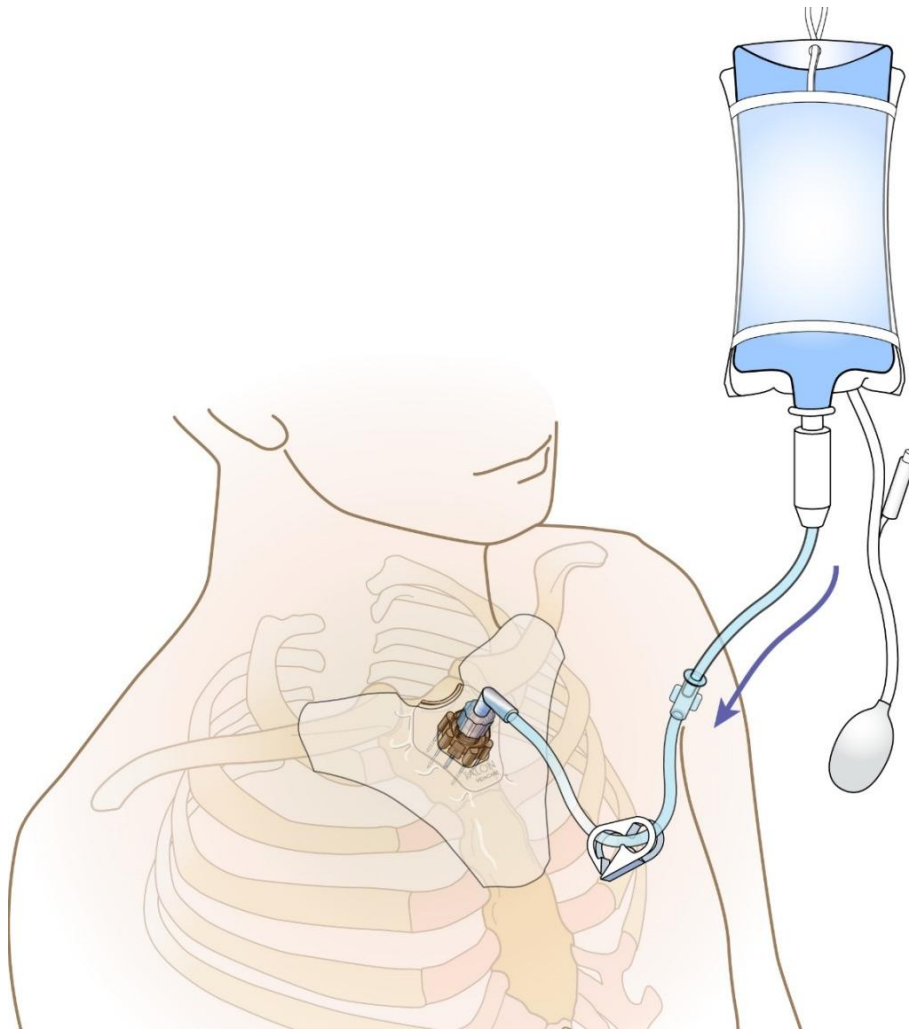
RAPID FLUSH



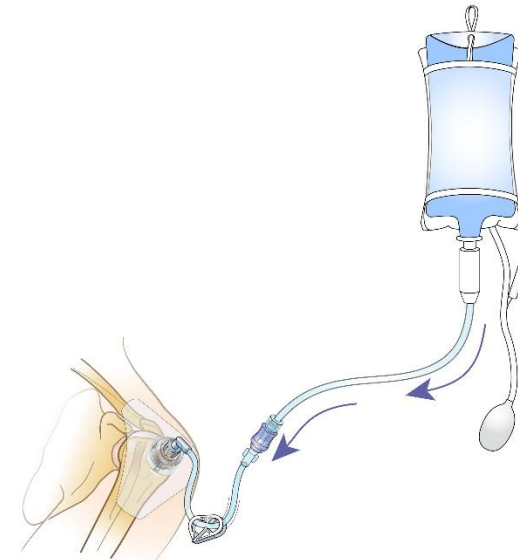
Adults: 5-10 mL Normal Saline



Consider for blood typing and other commonly ordered labs



- For optimal flow infuse with pressure
- Administer medications in same dose, rate and concentration as given via peripheral IV



RECOMMENDED ANESTHETIC TECHNIQUE FOR ADULTS

Prime extension set with 2% lidocaine (IV lidocaine)

Slowly infuse 2% lidocaine 40 mg over 120 seconds

Allow lidocaine to dwell in IO space 60 seconds

Flush with normal saline

Slowly infuse 2% lidocaine 20 mg over 60 seconds

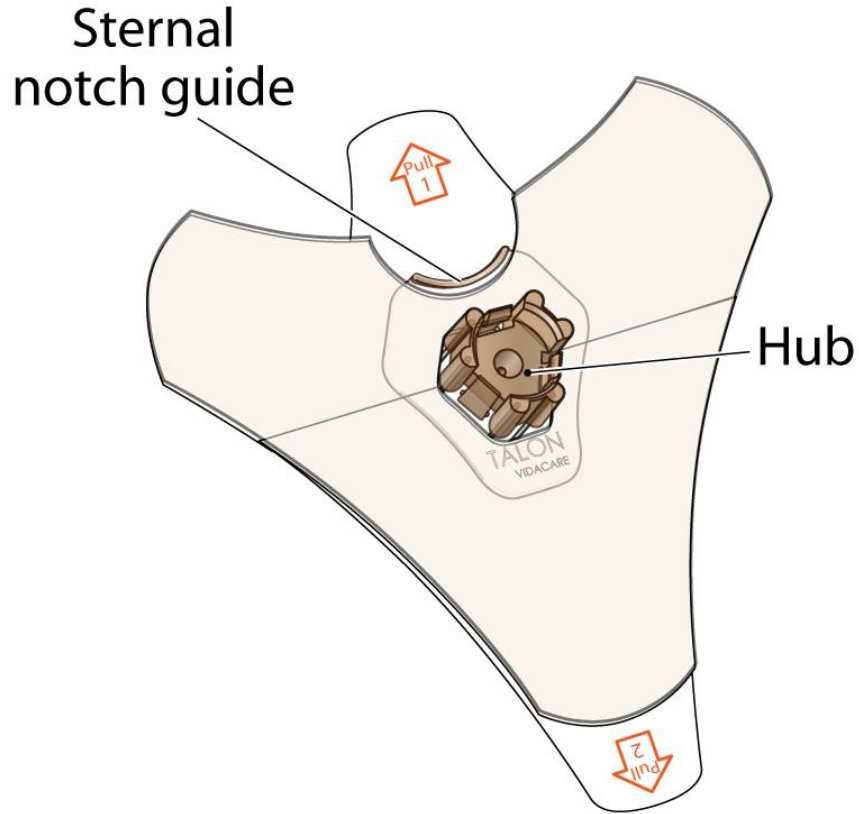
Observe cautions/contraindications for lidocaine, confirm dose per institution

Site/Catheter

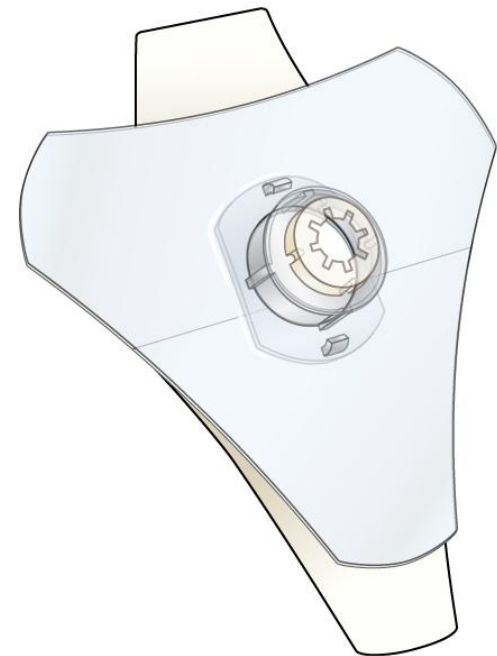
- Intact/patent
- Dressing and connections are secure
- Need for repeat flush
- Evidence of complications

Pain assessment

- Need for additional lidocaine

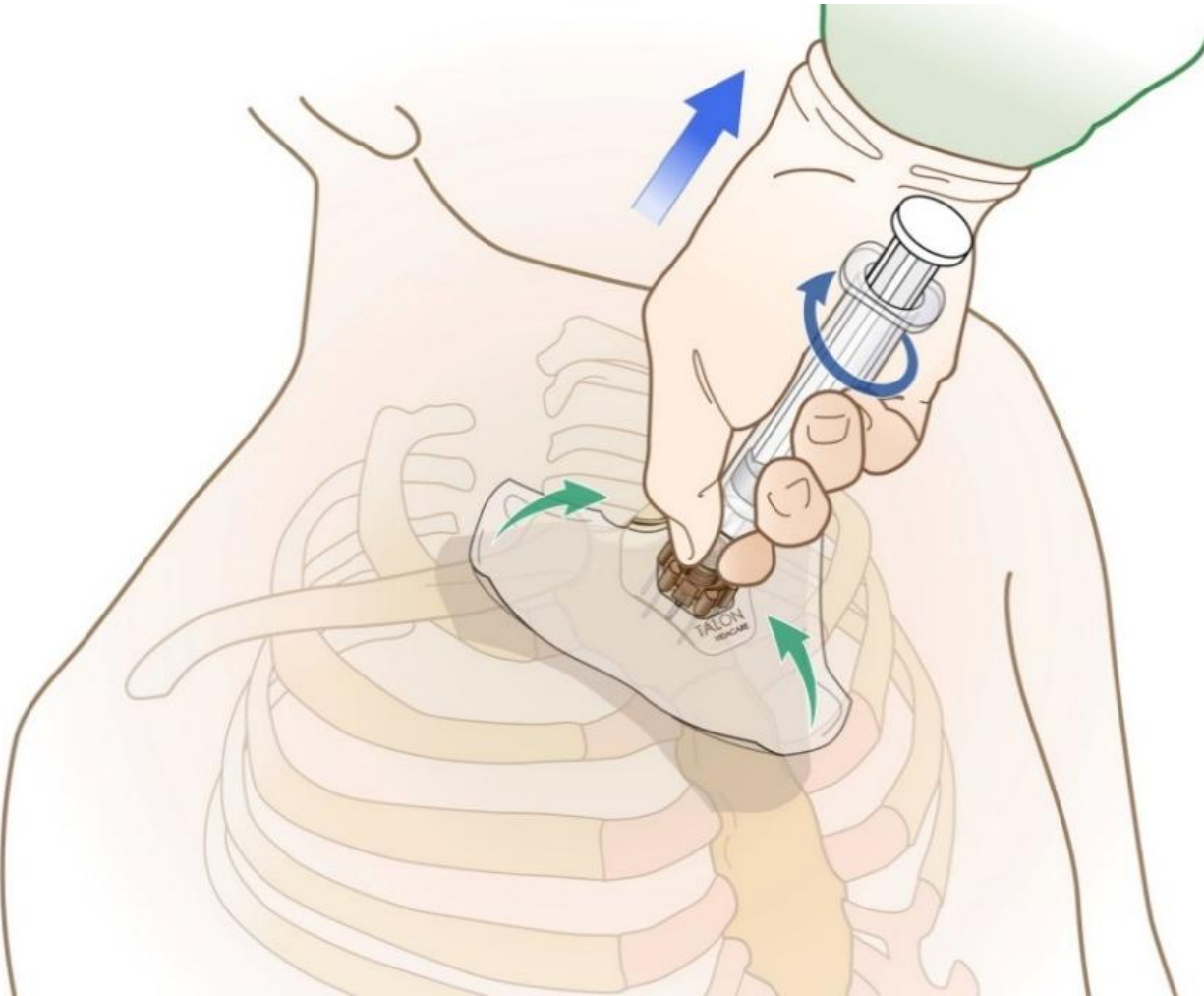


Sternal Locator
For Use in Sternum Only

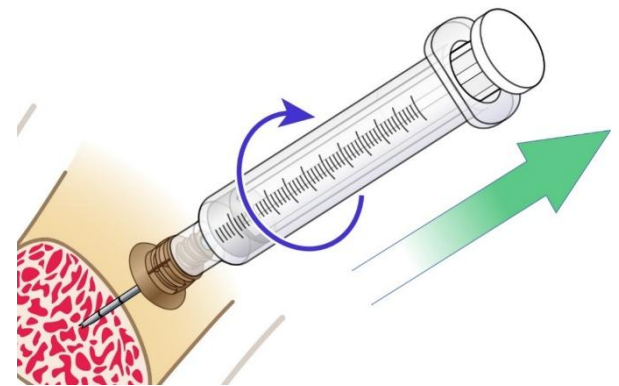


EZ-Stabilizer® Dressing
For Use in Extremities Only

REMOVAL



Do NOT rock or bend during removal



24 Hour Clinical Support 800-680-4911

Teleflex, EZ-IO, EZ-Connect, EZ-Stabilizer and T.A.L.O.N. are trademarks or registered trademarks of Teleflex Incorporated or its affiliates.
© 2014 Teleflex Incorporated. All rights reserved. MC-000302